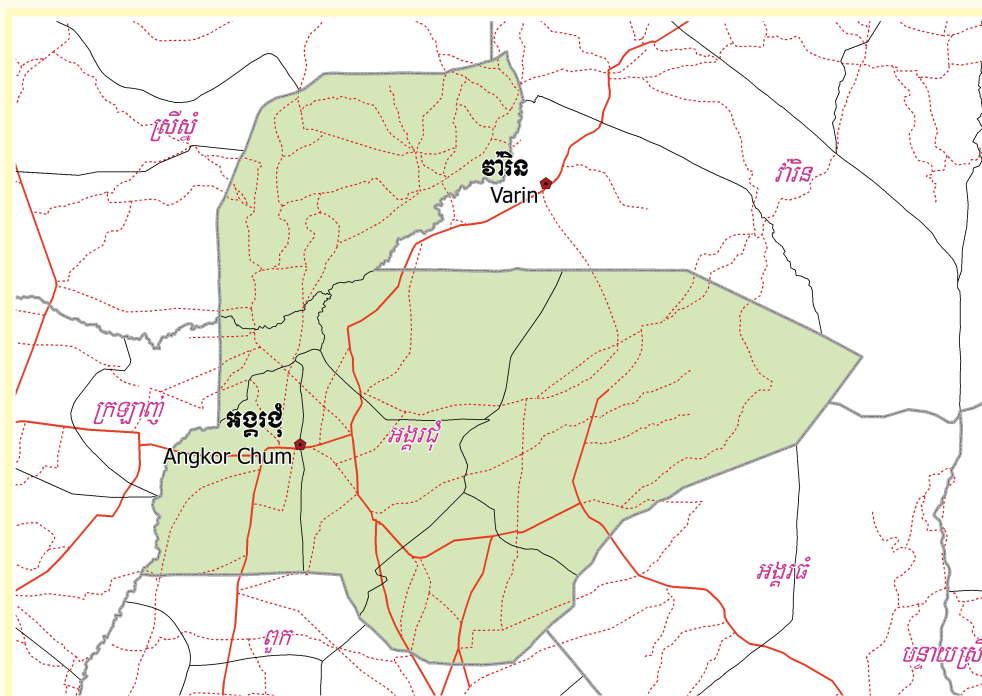


KINGDOM OF CAMBODIA
Nation Religion King



**National Committee for Sub-National
Democratic Development (NCDD)**



ANGKOR CHUM DISTRICT DATA BOOK 2009

District Code Nr: 1701
Siem Reap Province

October 2009

Angkor Chum District Data Book 2009

District Code Nr: 1701

Siem Reap Province

Table of Contents

List of Abbreviations	i
Glossary.....	ii
Preface	vi
Introduction	vii
SECTION A: GEOGRAPHY	1
1 Administration and Infrastructure.....	3
2 Land Use and Natural Resources.....	5
3 Geography	7
3.1 Land Area	7
3.2 Distances between Offices	7
SECTION B: DISTRICT PROFILE	9
1 General Information	11
1.1 Population of the District.....	11
1.2 Occupations	12
1.3 Property	14
2 Infrastructure and Economy.....	16
2.1 Roads in meters over 3 years.....	16
2.2 Sewerage Pipes in meters over 3 years.....	16
2.3 Drainage and Bridges	16
2.4 Services in the District	16
2.5 Agriculture.....	17
3 Social Aspects	28
3.1 Education	28
3.2 Health.....	34
3.3 Water and Sanitation	36
3.4 Vulnerable groups.....	40
3.5 Migration	42
4 Natural Resources and Environment (NRE).....	44
4.1 Families involved with NRE issues over 3 years	44
4.2 Percentage of Families involved with Natural Resource issues, by Commune, for 2008	44
4.3 Percentage Houses with access to Garbage collection and Families affected by environmental Pollution, by Commune, for 2008	44
4.4 Percentage Families using chemical Fertilizer and chemical Pesticides, by Commune, for 2008 ..	44
5 Administration and Security	45

5.1	Birth Registration across 3 years.....	45
5.2	Number of unregistered Infants born in 2008, by Commune	45
5.3	Registered criminal Cases over 3 years	45
5.4	Registered criminal Cases per 10,000 people, by Commune, for 2008.....	45
5.5	Number of registered Land Disputes, by Commune, in 2008	45
6	Gender	46
6.1	Registered Domestic Violence over 3 years.....	46
6.2	Percentage of registered cases of Families experiencing domestic Violence, by Commune, in 2008	46
6.3	Women's involvement over 3 years.....	46
6.4	Percentage of Female Participants in Civil Society and of 18-60 year women with uncertain Jobs, by Commune, in 2008	47
6.5	Female-headed Households over 3 years.....	47
6.6	Percentage female-headed Households and with Children of less than 5 years old, by Commune, in 2008	47
7	Indigenous People in the District	48
7.1	Ethnic Minorities in the District over 3 years.....	48
7.2	Other Minorities in the District over 3 years.....	48
	SECTION C: PLANS AND PROJECTS	49
8	Priorities and Plans	51
8.1	Priorities of Commune Councils for 2009 in the District by Sector	51
8.2	Temporary Agreements by Commune, for 2009	55
8.3	Outputs, estimated and actual costs of C/S Fund Projects between 2005 and 2008, by Commune	66
8.4	Total Expenditure on C/S Fund Projects by sector and commune between 2005 and 2008.....	67
8.5	Actual 2009 C/S Fund projects by Commune	67
9	District level Projects from 2006 to 2009	68
9.1	District Initiative Infrastructure Projects from 2006 to 2009	68
9.2	District Initiative Service Projects from 2006 to 2009	69
9.3	Inter Commune Council Projects in 2008 and 2009	70
9.4	Other Projects in 2008 and 2009	70
	SECTION D: SERVICES AND ORGANIZATIONS	71
10	Infrastructure.....	73
10.1	Length of and Expenditure on Roads in 2008, by District	73
10.2	Scale of and Expenditure on Irrigation in 2008, by District.....	73
10.3	Power Supply in 2008, by District	74
11	Health Facilities.....	75

11.1 Health Facilities in the Province, by Operational District.....	75
11.2 Health Facilities and Staff in the province, by Operational District.....	75
11.3 Deliveries in 2007 in the Province, by Operational District.....	77
12 Education	78
12.1 Schools, Classes, Students, Staff, for for all levels, for 2007/2008 by District.....	78
12.2 Characteristics of Schools and School Principals for 2007/2008 by Commune	78
12.3 Enrolment by Level of Education, 2006/2007 by Commune	79
12.4 Enrolment by Level of Education, 2007/2008 by Commune	79
12.5 Aspects of Enrolment for 2007/2008 by Commune.....	79
12.6 School Buildings for all schools in the District for 2007/2008, by Commune	80
12.7 Conditions of Classrooms and Existence of Separate School Office and Library, by Commune	80
12.8 Community Participation and Financing across all schools in the District for 2007/2008 by Commune	80
12.9 Percentage Student Flow Rates and Graduation by level 2006/2007, by Commune	81
13 Staff and Resources at the District	82
13.1 District Councilors elected in 2009	82
13.2 Committees of the Council.....	82
13.3 Board of Governors.....	83
13.4 Offices under Sala Krong, Sala Srok and Sala Khan	83
13.5 Municipality/District/Khan line offices.....	83
13.6 Properties and Equipment of District Administration	84
13.7 Registered Revenue of the District Administration in 2008	85
13.8 Services in the District	85
13.9 Civil Society Organizations active in the District.....	85
13.10 Private Sector Organizations.....	87
SECTION E: POVERTY DATA	89
14 Data on Poverty	91
14.1 Predicted Poverty Rates for 2009, by commune	91
14.2 Poverty data from survey.....	91

List of Abbreviations

#	Number
AGR	Agriculture
BR	Birth Registration
C. Pilot	Piloted Commune
C/S	Commune / Sangkat
CBO	Community-Based Organization
CDB	Commune Database
CDPD	Commune Development and Planning Database
CIP	Commune Investment plan
CLTS	Community Led-Total Sanitation
Comm.	Commune
Com Cov	Commune Covered
CPA	Complementary Package of Activities
CPS	Community Preschool
CCWC	Commune Committees for Women and Children
DANIDA	Danish International Development Agency
DDLG	Democratic Development and Local Governance Project (EC-UNDP)
DFID	Department For International Development (UK)
DIP	District Initiative Project
DIS	District Information System
District PDRD	District Office of Rural Development
District WP	District Work Plan
DIW	District Integration Workshop
DoLA	Department of Local Administration
Dr	Doctor
DWRM	District Office of Water Resource and Meterology
ECD	Early Childhood education (part of PE)
EMIS	Education Management Information System
Event IC	Celebration of International Days
FDH	Former District Hospital
GTZ	German Society for Technical Cooperation (Gesellschaft für Technische Zusammenarbeit GmbH)
Ha	Hectare
HC	Health Center
HC (NB)	Health Center (no building)
HH	Headed Household
HSI	Intervention for Health
HP	Health Post
HW	Hand Washing
ICC	Inter Commune Council
IFAD	International Fund for Agricultural Development
IND	Industry
Inter-commune	Inter-Commune Project Management Committee or Inter-commune project
IO	International Organization
LASED	Land Allocation for Socio-Economic Development
LGCR	Local Governance for Children's Rights
M&E	Monitoring and Evaluation
MA	Medical Assistant
MoEYS	Ministry of Education, Youth and Sports
MoH	Ministry of Health

MoP	Ministry of Planning
MPA	Minimum Package of Activities
MW1	Primary Midwives
MW2	Secondary Midwives
n/a	Not available
NCD	National Contracts Database
NCDD	National Committee for Sub-National Democratic Development
NGO	Non-Governmental Organization
NRML	Natural Resources Management and Livelihood
NU1	Primary Nurse
NU2	Secondary Nurse
OD	Operational District
ODF	Open Defecation Free
Ope. Costs	Operational Costs
Others	Other Staff
PBW	Public Works
PDoEYS	Provincial Department of Education, Youth and Sport
PDRD	Provincial Department of Rural Development
PDWRM	Provincial Department of Water Resource and Meteorology
PE	Parenting Education
PHAST	Participatory Hygiene and Sanitation Transformation
PHD	Provincial Health Department
PID	Project Information Database
PMC	Project Management Committee
Pop 04-05	Population Covered 2004 or 2005
PSDD	Project to Support Democratic Development through Decentralization and Deconcentration
RRD	Rural Road Development
RH	Referral Hospital
RILGP	Rural Investment and Local Governance Project
RPRP	Rural Poverty Reduction Program
RuLIP	Rural Livelihoods Improvement Program
SIDA	Swedish International Development Cooperation Agency
SPPA	Senior Provincial Program Advisor
TBA	Traditional Birth Attendant
UNDP	United Nations Development Project
UNICEF	United Nations Children's Fund
Vil	Village
Vil Cov	Village Covered
VIL-HC	Distance from Village to Health Center
WASH	Water, Sanitation and Hygiene
WRM	Water Resource and Meteorology

Glossary

C/S Fund: The Commune/Sangkat Fund is established and managed by the Government of Cambodia to provide financial support for development projects and administrative costs of Commune/Sangkat Councils. The amount is determined as a percentage of the National Budget (for 2009: 2.8% over the 2008 budget) and is expected to increase gradually over the years. The total 2009 budget under this fund is \$ 27,643,902 (of which \$ 19,272,170 is for Development Projects and \$ 8,371,731 for Administration). Under the Rural Investment and Local Governance Project the World Bank currently reimburses the costs of development projects if these meet the Bank's criteria.

CDB: the Commune Data Base is a national database, compiled by the Ministry of Planning, on the basis of detailed questionnaires, completed at village and commune level, which are then sent to the Departments of Planning for data entry. The most recent round of data collection took place at the end of 2008 (and is reflected in the District Data Books). Commune, District and Provincial Profiles can be generated from this database and should be available from provincial Departments of Planning.

CDPD: the Commune Development and Planning Database is a database maintained by Departments of Planning and Ministry of Planning, recording proposed activities as determined and prioritized by Commune and Sangkat Councils; the Temporary Agreements between these councils and supporting agencies, as decided at District Integration Workshops and details on projects that actually take place at commune, district and provincial levels.

CIP: The Commune Investment Plan is a rolling three-year plan, developed and decided by the Commune or Sangkat Council. It sets priorities and identifies the projects proposed for the years to come.

Commune and Sangkat (C/S): the Communes (in rural areas) and Sangkats (in urban areas) are the lowest and smallest units of local government. Councils are elected directly, once in five years, for the 1417 Communes and 204 Sangkats. In the C/S there are 14,119 villages, which have Village Chiefs, but don't constitute a formal level of local government.

DIP: the District Initiative Project is jointly supported by the MDLF (Multi-Donor Livelihood Facility (supporting the NRM&L Program)) and PSDD. In 2009 it covers 106 districts, 60% of the total in the country, with a budget of \$ 3.2 million. It is focused on capacity development in planning, democratic development, public competitive procurement, financial management and service delivery.

DIS: The District Information System is a national database maintained by NCDD, recording resources, staff, revenue, infrastructure and equipment available in the 193 Districts and Khans throughout the country. The last update took place in July 2009.

District, Municipality and Khan constitutes the third level of Government in Cambodia. There are 159 rural Districts, 26 Municipalities and 8 Khans of Phnom Penh Capital. They all have Councils which were, for the first time, elected in May 2009, by the Commune/Sangkat Councilors. These councils have a mandate for 5 years.

DIW: District Integration Workshops are held between July and October, to bring Commune/Sangkat Councils, looking for support for their projects, together with the governmental and non-governmental agencies that may provide support.

ICC: Inter Communes Council projects are executed in 10 provinces under the Democratic and Decentralized Local Governance Project (DDLG). This five year project (2006-2010) is executed by Ministry of Interior and funded by the European Commission and UNDP. The project focuses on improving dialogue partnership and accountability; create a network of Commune Councils at the provincial and national level and support and contribute to local area development for poverty reduction. The work under the ICC component supports investments and services formulated through inter-commune dialogue and planning.

MEDiCAM: A non-profit and non-partisan membership organization for NGOs active in Cambodia's health sector. It is the primary networking agency for health-related NGOs.

NCDD: the National Committee for sub-National Democratic Development is the inter-ministerial body charged with the implementation of the Organic Law (a key legislative document, adopted in 2008, outlining the envisaged decentralization). NCDD also channels substantial financial assistance by a number of Development Partners, to projects and programs at various levels. This amounted to over \$ 91 million in 2008. More information at: www.ncdd.gov.kh. This website also provides access to reports, manuals, legal documents, details on projects and more.

OD: the Operational Districts are the districts as defined and used by the Ministry of Health. These do not coincide with the 193 (Administrative) Districts and Khans, as used by all other RGC agencies. The Operational Districts are usually larger, and so there are 77 Operational Districts against 193 administrative Districts and Khans. However they do fit within the boundaries of administrative provinces.

PID: The Project Information Database is the database maintained by NCDD at national and sub national level, to follow all aspects of projects by Commune and Sangkat Councils, including the C/S Fund projects

Provincial Investment Fund (PIF)

The Provincial Investment Fund is allocated to all Provinces and Municipalities according to a population based formula. Part of the fund is earmarked for support to planning activities of the Provincial / Municipal Department of Planning; and to gender mainstreaming activities of the Provincial Department of Women's Affairs. The remaining "un-earmarked PIF" is allocated by PRDC to sectoral technical departments against established criteria and in response to proposals with prioritisation taking into account: priorities formulated by the CS Councils and aggregated by District into District Priority Activities Matrices (DPAM); alignment with national planning and poverty alleviation criteria, complementarity with other planned activities; and performance of the Department concerned in implementation of activities in previous years. With this provisional allocation, the Department then programs activities through the District Integration Process. Finally, the agreed activities, plus support costs amounting to no more than 25% of the total, are included in a sub-contract signed between PRDC and the Department, pursuant to the overall PSDD contract signed between NCDD and PRDC. Total budget has been around \$ 2 million per year.

Province: the 23 Provinces and Phnom Penh Capital City represent the 2nd layer of government. They vary in size, from very small, like Kep (approx. 36,000 people) and Pailin (approx. 70,000 people), or large but with small populations, like Mondulkiri (over 60,000 people), and Ratanakiri (over 153,000) to densely populated and large, like Kampong Cham (over 1.7 million people) and Kandal (approx. 1.4 Million people).

PSDD: the Project to Support Democratic Development through Decentralization and Deconcentration is funded by DFID (UK), SIDA (Sweden) and UNDP and runs from 2006 till the end of 2010 (including a one year extension). Annual budgets range from \$ 11 million to over \$ 18 million. The project provides core technical support to NCDD and to the provinces, financial support to the C/S Fund, District Initiative, Provincial Investment Fund and capacity building support through training, studies and advisory services.

RILGP: The Rural Investment and Local Governance Project is a World Bank funded project that provides substantial support to C/S Fund projects and to developing the required infrastructure, policies, systems and skills. It started in 2003 with a Loan for \$ 22 million for 2003-2007 and was then extended with a Grant of \$ 36 million for the period of 2007-2010. Discussions about a possible RILGP 2 are taking place between RGC and the World Bank.

RPRP: the Rural Poverty Reduction Project is a seven year project from 2004 till 2010, funded by IFAD and UNDP and implemented through the Ministry of Agriculture, Forestry and Fishery, supported by the Ministry of Interior and facilitated by NCDD. The project is active in the provinces Prey Veng and Svay Rieng and focuses on 120,600 households below poverty line. The objective is poverty reduction with the active participation of the poor through improved livelihoods, Strengthened capacity, Sustainable farming systems and natural resource management, new and/or rehabilitated infrastructure development, increase accessibly to technology, services and markets for their economic and social development.

RULIP: the Rural Livelihoods Improvement Project is implemented by the Ministry of Agriculture Forestry and Fisheries (MAFF)' Project Support Unit- PSU, with the NCDD playing the role of cooperating agency. Funded by IFAD and UNDP, the project will run till 2014. The target group consists of poor households who have little or even no land, few livestock or other assets and often many dependents. The main goal of the project is to directly or indirectly improve the livelihood systems, food security and incomes of a total of 33,900 rural poor, ethnic minority and female headed households in targeted village of Kratie, Preah Vihear and Ratanakiri provinces in a sustainable manner.

Seth Koma: The UNICEF funded Seth Koma program focuses on measurable action for children and women. During 2006 -2010 it is implemented in six provinces. Government and UNICEF pursue a set of inter-related goals, addressing critical stages of the life cycle of the child: a) Mothers have safe pregnancies and deliveries and healthy newborns; b) best possible start in life of infant; c) Children enter schools at the right age of six years; d) Children are protected from exploitation, abuse, violence, discrimination and other risks; and e) Youth and adolescents acquire life skills, express their views, participate in the decisions.

Preface

The Government of Cambodia attaches great importance to optimal use of scarce resources and to participatory planning and management at all levels. The Organic Law which was adopted in 2008 provides the legal context for further steps towards improving and decentralizing planning, management and monitoring, and towards greater accountability and transparency of institutions at sub-national levels.

The Government has established elected Councils at the sub-national levels, and we will progressively give them the responsibilities, together with the human and financial resources, to deliver a wide range of public services. They will be more democratic, more efficient, more transparent and accountable, better at addressing gender and other inequalities, and at fighting corruption. We recognize that development does not come from government alone; it needs the involvement of citizens, civil society and the private sector, and the new system will facilitate this.

A central element in this process is the availability of information on any aspect of development to all concerned parties. The newly elected Councillors at District and Khan level, line departments operating at these levels, but also NGOs, Development Partners, Commune Councillors and citizens throughout Cambodia need information on problems and requirements, resources and opportunities, services and agencies, plans and projects. They will need such information to better understand the present situation, set targets for the future, monitor progress, know what others are doing and to apply resources wisely and this is the reason the District Data books will be so valuable.

The District Data Books are a major step towards full transparency and towards informed planning and decision-making. They provide all available data at District, Khan, Commune and Sangkat level in easily accessible formats, in Khmer and English, through over 16,000 printed copies, CD-ROMs and the NCDD website.

This is the first time in Cambodia (and possibly in South East Asia) that such detailed information is made so widely available and NCDD should be commended for the hard work that has gone into this. We also thank the Ministry of Planning, which provided the detailed data of the Commune Data Base, the sectoral ministries and provincial authorities who contributed data and the Development Partners who provided financial support.

It is our sincere hope that the publication of the District Data Books will strengthen capacities, especially at district levels, for evidence-based development planning. We also hope that this information will deepen the understanding among Ministries, Provincial Authorities, Development Partners, NGOs and research agencies of the realities at commune and district levels.

We call upon all to use and distribute this information, complement or correct where appropriate and to contribute new data in the years to come.

Sar KHENG

Deputy Prime Minister, Minister of Interior and Chairman of NCDD

Introduction

Purpose

The purpose of the District Data Books is to bring together information on any aspect of life and development of Districts, Khans, Communes and Sangkat, together and make this widely available. The primary targets are the newly elected District Councilors, district level line departments, provincial agencies, Development Partners and NGOs operating at this level. They need detailed knowledge on current living conditions, natural resources, infrastructure, agriculture and other economic activities, current service levels, past and planned projects and available resources.

While much information exists on many of the above aspects, it is often hard to access that information and much is lost to reports, databases and statistics that are not widely shared. Data are often only available in one language and often out-of-date, and many reports cover only one sector or region.

We found that these problems are especially acute at the district level. Now that Districts are becoming a much more significant level of local government and development planning, there is an urgent need for wide-ranging data to be used for setting base-lines, planning and prioritizing, monitoring and learning.

Approach

We have attempted to identify and compile all available statistics, reports, maps and other data at district and/or commune level. From this we have selected information that is available for all or most districts, reasonably reliable and up-to-date, sufficiently detailed and of possible interest to development planners, decision makers, agencies and citizens.

The major sources of the information in these District Data Books are:

- a) The Commune Data Base information over the years 2006 to 2009 (the most recent data were collected late last 2008), as compiled by the Ministry of Planning
- b) Detailed information directly collected from the Ministry of Health, the Ministry of Education, Youth and Sports and (for maps) the Ministry of Land Management, Urban Planning and Construction
- c) The Project Information Database (PID) at NCDD (up-to-date)
- d) The Commune Development and Planning Database (CDPD) (up to date)
- e) The District Information System (DIS) (updated per Mid 2009)
- f) Direct data collection at provincial and district level on private sector, irrigation, roads, and electricity, through provincial agencies
- g) Medical data collected from MEDiCAM
- h) The ID Poor Project – for poverty data on a number of provinces and districts
- i) NCDD's work on predictive poverty rates
- j) Specific projects for outputs, plans and budgets (Seth Koma, RILGP, RPRP and ICC)

Limitations of the data

We are fully aware that the data we collected are not always complete, consistent or correct. While we have rejected information that was wrong or very incomplete, we decided not to aim for statistical and scientific perfection, but to include information that is useful, relevant

and comprehensive. We also accepted different sources for the same data as this may encourage discussion on the quality of the respective data.

We strongly encourage anyone who notes errors or incompleteness in these data to contact us and to share their data. We hope that the next round of producing such District Data Books can draw on wider sources and more complete data.

We encourage the District Administrations, who receive these data also in digital format, not only to use these for their planning and monitoring, but also to start correcting and updating these data and to share new data with NCDD for future use.

Contents

The information in the following pages is organized in five sections:

- a) **Geographical data:** this section provides maps on infrastructure and administration and on land use and natural resources management. These maps are also provided in large format to all Districts and Khans.
- b) **District Profile:** this presents wide ranging data, covering 2006 – 2009, at district and commune level, extracted from the Commune Data Base, but edited for better understanding.
- c) **Plans and Projects:** this section presents development priorities determined by Commune and Sangkat Councils, Temporary Agreements, outputs and expenditure of major projects at Commune and District level over 2006 – 2008 and plans and budgets for 2009.
- d) **Services and Organizations:** this section provides details on key infrastructure (roads, electricity, irrigation systems) and services in health and education at district and commune level. It also provides an inventory of resources at the District Administration, NGOs operating in the district and private sector agencies active in the district.
- e) **Poverty Data:** this section provides predicted poverty rates for 2009 for all districts and communes and detailed poverty data compiled and processed by the ID Poor project for those that have been covered by this project.

The future

It is our hope that this is the start of a longer-term process. We hope that a next edition of these District Data Books will offer more comprehensive, correct and up-to-date information. We hope that the District Administrations will not only start using this information, but also improve and update it. For this they are all provided with the full data set in digital format.

We invite agencies, projects and experts to send reports, statistics and maps that could be used for a next version to us and we invite all users of the District Data Books to inform us about errors, updates and inconsistencies. Please contact us through info@ncdd.gov.kh

We now invite you to browse through this data book. You may open this randomly or use the table of contents and go to the aspects that have your special interest.

We hope that you will be informed, surprised and assisted. We hope, above all, that this information will lead to a deeper understanding of causes and effects of poverty, to purposeful decisions on how to tackle those causes and to greater transparency in using scarce resources for the benefit of all.

Martin de Graaf
Program Advisor, PSDD/NCD

SECTION A: GEOGRAPHY

1 Administration and Infrastructure

Please see separate folder containing A3 maps.

2 Land Use and Natural Resources

Please see separate folder containing A3 maps

3 Geography

3.1 Land Area

Total Land Area (ha)	Forest Land Area (ha)		Cultivation Land Area (ha)	Construction Land Area (ha)	Other Land Area (ha)
	Total	Flooded Forest Area			
47903	22197	0	20274	1122	4310

3.2 Distances between Offices

Location	Distance (Km)
From District Office to C/S Office of Char Chhuk	1.5
From District Office to C/S Office of Doun Peng	4
From District Office to C/S Office of Kouk Doung	17.4
From District Office to C/S Office of Koul	7
From District Office to C/S Office of Nokor Pheas	11.5
From District Office to C/S Office of Srae Khvav	11
From District Office to C/S Office of Ta Saom	4

SECTION B: DISTRICT PROFILE¹

¹ All data in this section come from the Commune Database (CDB) unless otherwise specified. These include primarily new CDB data, collected late 2008, and some data from earlier years. Please note that percentages are rounded to the nearest whole number.

1 General Information

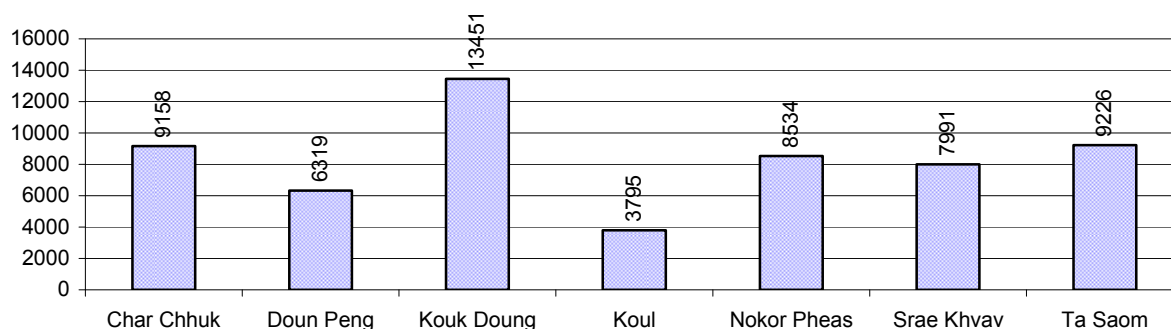
1.1 Population of the District

1.1.1 Total Population

Number of families	2005	2006	2007	2008
Total number of families	10,303 families	10,615 families	10,839 families	11,070 families
Increase (+)/Decrease (-) in nr of families		3%	2%	2%
Total population	55,187 pers	55,081 pers	57,558 pers	58,474 pers
Increase (+)/Decrease (-) in nr of people		0%	4%	2%
Number of female Headed Households (HH)	1,507 families	1,575 families	1,529 families	1,559 families

Note: Percentages of population and increase/decrease are calculated on basis of the previous year. A negative sign in front of the percentage indicates a decrease in population.

1.1.2 Population, by Commune, in 2008



1.1.3 Population, by Age Group, over 3 years

Population by age group	2006	2007	2008	
	%	%	%	Number
Age 0-5 years (as percentage of the population)	13%	14%	14%	8,164 persons
Male 0-5 yrs	48%	50%	49%	4,032 persons
Female 0-5 yrs	52%	50%	51%	4,132 persons
Age 6-17 (as percentage of the population)	29%	31%	30%	17,789 persons
Male 6-17 yrs	50%	50%	50%	8,905 persons
Female 6-17 yrs	50%	50%	50%	8,884 persons
Age 18-60 (as percentage of the population)	53%	51%	51%	30,053 persons
Male 18-60 yrs	48%	47%	47%	14,195 persons
Female 18-60 yrs	52%	53%	53%	15,858 persons
Age 61 above (as percentage of the population)	4%	4%	4%	2,468 persons
Male 61	47%	44%	45%	1,118 persons
Female 61	53%	56%	55%	1,350 persons

Note: The overall percentage for each age group is calculated on the basis of the total population. The gender distribution of each group is calculated on the basis of the population within that particular age group.

1.2 Occupations

1.2.1 Percentage of families with a particular Occupation over 3 years

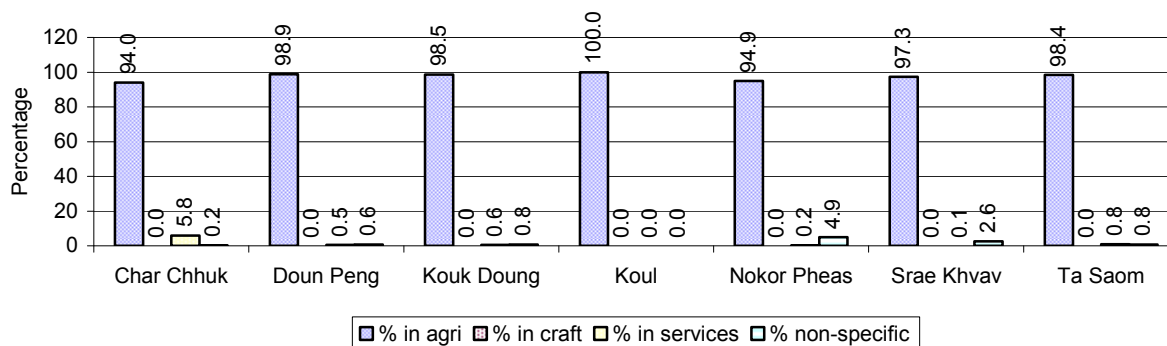
This table shows the percentage of the population who have a particular occupation (job), for example the percentage of the population in the district who are rice farmers, furniture crafter, trader, etc.

Description	2006	2007	2008	
	%	%	%	Number
Families whose main occupation is agriculture	99%	98%	97%	10,766 Families
Families whose primary occupation is rice farming	99%	98%	97%	10,764 Families
Families whose primary occupation is cultivating long-term crops	0%	0%	0%	0 Families
Families whose primary occupation is cultivating short-term crops	0%	0%	0%	2 Families
Families whose primary occupation is cultivating vegetable	0%	0%	0%	0 Families
Families whose primary occupation is fisherman	0%	0%	0%	0 Families
Families whose primary occupation is livestock farmer	0%	0%	0%	0 Families
Families whose primary occupation is NTFP collection	0%	0%	0%	0 Families
Families whose main occupation is craft work	0%	0%	0%	0 Families
Families, whose main occupation is in furniture craft, wooden, rattan, vine, bamboo	0%	0%	0%	0 Families
Families whose main occupation is in metal, aluminum, glass goods production	0%	0%	0%	0 Families
Families whose main occupation is food production	0%	0%	0%	0 Families
Families whose main occupation is tire, plastics and rubber goods production	0%	0%	0%	0 Families
Families whose main occupation is textile, clothing goods production	0%	0%	0%	0 Families
Families whose main occupation is in other production, not listed above	0%	0%	0%	0 Families
Families whose main occupation is services	1%	1%	1%	145 Families
Families whose main occupation is trade	1%	1%	1%	70 Families
Families whose main occupation is repair	0%	0%	0%	33 Families
Families whose main occupation is providing transport services	0%	0%	0%	9 Families
Families whose main occupation is providing other services	0%	0%	0%	33 Families
Families whose main occupation is not clear (or multi)	0%	0%	1%	159 Families

Note: The occupation percentages are calculated on the basis of the total number of families.

1.2.2 Percentage Families that work in one of four occupational sectors, by Commune in 2008

This table indicates the percentage of families involved in one of four occupation types: agriculture, craft, services or non-specific (other). Please note agriculture includes forestry activities such as cutting down trees and gathering gum from the trees.



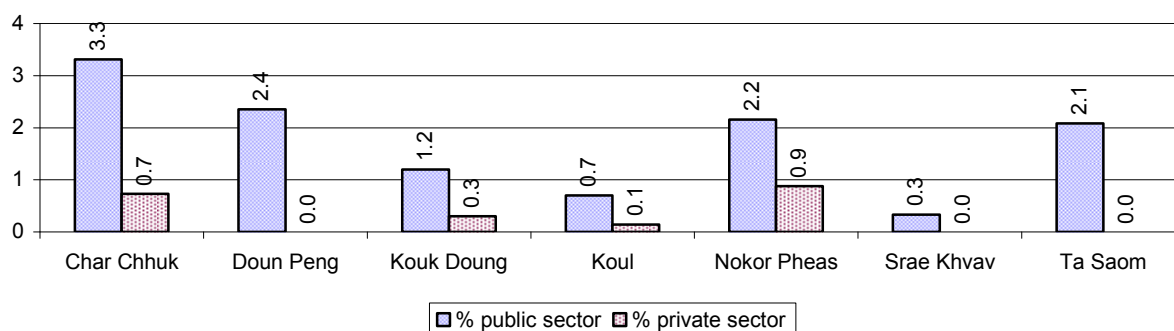
Note: Calculated on the basis of the total number of families within a commune.

1.2.3 Percentage of Families with public Sector, private Sector or uncertain Jobs, over 3 years

Description	2006	2007	2008	
	%	%	%	Number
Families that have a family member who is a government official, staff or worker	2%	2%	2%	197 families
Families that have a family member who is a private sector staff or worker	0%	0%	0%	35 families
Number of people aged 18-60 with uncertain/irregular jobs	0%	3%	1%	294 persons

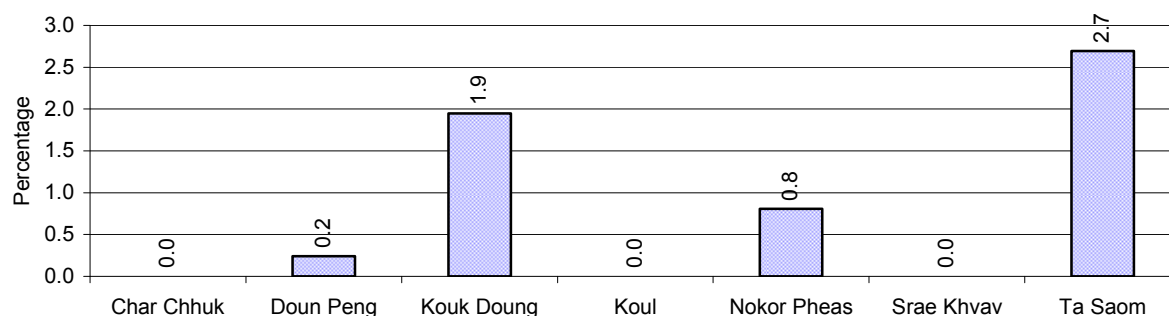
Note: In the first two rows percentages are calculated on the basis of the total number of families. In the third row the percentage is calculated on the basis of the total number of people aged 18-60 years.

1.2.4 Percentage of Families with public or private Sector Jobs, by Commune in 2008



Note: Calculated on the basis of the total number of families in the commune

1.2.5 Percentage of People aged 18-60 years with uncertain/irregular Jobs, by Commune, in 2008.



1.3 Property

1.3.1 Housing types and facilities over 3 years

This table shows the percentage of people living in a certain type of house. It also indicates how many houses have electricity or battery powered lights and how many have TV.

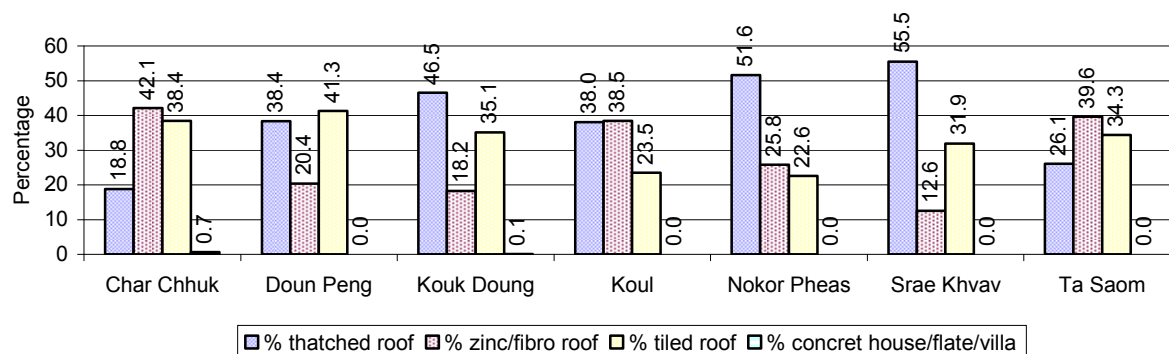
House Type	2006	2007	2008	
	%	%	%	Number
House with thatched roof	48 %	41 %	39 %	4,301 houses
House with zinc/fibro roof	21 %	26 %	27 %	2,977 houses
House with tiled roof	31 %	33 %	33 %	3,650 houses
Flats/apartments (with many families living)	0 %	0 %	0 %	0 houses
Concrete house or flat (with one family living)	0 %	0 %	0 %	15 houses
Villa house	0 %	0 %	0 %	0 houses
Houses with electricity	2 %	2 %	2 %	218 houses
Houses with battery light	27 %	30 %	46 %	5,047 houses
Houses with TV	26 %	32 %	38 %	4,175 houses

Note: Calculated against the total number of houses

1.3.2 Families living on public Land or without a permanent House

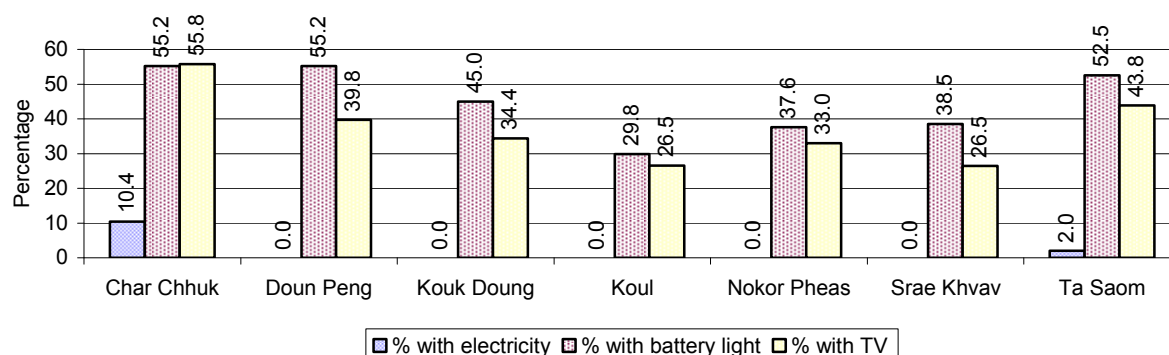
Living situation	2006	2007	2008
Families living in a house on public land	40 families	24 families	7 families
People, without permanent housing	13 person(s)	6 person(s)	21 person(s)

1.3.3 Percentage of Population living in a particular type of House, by Commune, in 2008



Note: Calculated against the total number of houses in each commune

1.3.4 Percentage of Houses with Electricity, Battery Lights and/or TVs, by Commune, in 2008



Note: Calculated against the total number of houses in each commune

1.3.5 Types of Vehicles and their ratio to Families across 3 years

This table shows the number of families per vehicle in the district. The last column shows the total number of each type of vehicle in the district for 2008.

Description	2006 ratio	2007 ratio	2008	
			Ratio	Number
Bicycle and bicycle with trailer	1	1	1	8,046
Ox-carts and horse-carts	2	2	2	6,056
Motorbike/with trailer	7	6	4	2,518
Motor tri-cycle	N/A	N/A	N/A	0
Large Transportation				
Total number of cars/trucks	158	114	79	140
Locally made vehicles	483	258	205	54
Trucks for goods transport	408	471	277	40
Buses/mini buses for passengers	N/A	N/A	N/A	0
Family cars	559	361	241	46
Agriculture machinery				
Tractors used for plowing	10,615	10,839	N/A	0
Power-tillage used for plowing	123	50	34	329
Other type of machinery				
Other type of machinery	505	N/A	N/A	0
Water transportation				
Row boats	N/A	N/A	N/A	0
Total number of motor boats	N/A	N/A	N/A	0
Motor boats used for fishing	N/A	N/A	N/A	0
Motor boats used for passengers	N/A	N/A	N/A	0
Motor boats used for goods transporting	N/A	N/A	N/A	0

Note: Ratio of families to a particular type of vehicle is the result of the total number of families divided by total number of that type of vehicle. Other types of vehicles, such as bulldozer, excavator, rollers etc. are not listed.

2 Infrastructure and Economy

2.1 Roads in meters over 3 years

Description	2006	2007	2008
Bituminous road	6,250 m	14,250 m	14,250 m
DBST, Macadam road	16,700 m	0 m	0 m
Concrete road	0 m	0 m	0 m
Laterite road	53,511 m	52,871 m	58,191 m
Constructed earth road	53,418 m	53,544 m	54,244 m
Un-constructed earth road	34,225 m	17,315 m	17,315 m

2.2 Sewerage Pipes in meters over 3 years

Description	Sewage pipe length		
	2006	2007	2008
Total length of sewage pipe, diameter 30-50 cm	0 m	0 m	0 m
Length of newly constructed sewage pipe, diameter 30-50 cm	0 m	0 m	0 m
Length of sewage pipe, diameter 30-50 cm needs repair/rehabilitation	0 m	0 m	0 m
Total length of sewage pipe, diameter of pipe 60-100 cm	0 m	11 m	21 m
Length of newly constructed sewage pipe, diameter 60-100 cm	0 m	45 m	50 m
Length of sewage pipe, diameter 60-100 cm needs repair/rehabilitation	0 m	4 m	10 m
Sewage pipe, diameter of pipe over 100 cm	0 m	6 m	6 m
Length of newly constructed sewage pipe, diameter over 100 cm	0 m	0 m	0 m
Length of sewage pipe, diameter over 100 cm needs repair/rehabilitation	0 m	5 m	6 m

2.3 Drainage and Bridges

Construction Type	2006		2007		2008	
	place(s)	Length	place(s)	Length	place(s)	Length
Single pipe culvert	125	350m	149	680 m	156	707 m
Double-pipe culvert	73	291m	79	461 m	80	466 m
Box pipe culvert	48	286m	40	290m	44	313 m
Wooden bridge	13	115m	12	100m	12	90 m
Concrete bridge	11	109m	9	116m	8	105 m
Bale bridge	0	0m	0	0m	0	0 m
Spillway construction	0	0m	0	0m	0	0 m

2.4 Services in the District

Descriptions	Number of places by year		
	2006	2007	2008
Public			
Electricity generating stations	1	5	1
Health clinics	0	0	0
Private			
Bicycle and motorcycle repair places	70	61	75
Agricultural machinery, tools and equipment repair places	2	2	2
Electronic tool repair places	0	0	2
Battery-charging services	36	41	43

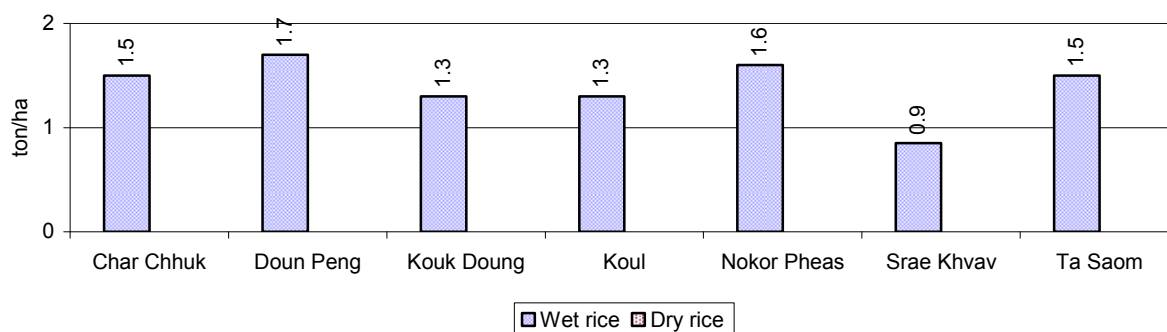
Descriptions	Number of places by year		
	2006	2007	2008
Handicraft places, wooden furniture and forest by-products	8	8	4
Other handicraft places (excluding furniture)	0	0	0
Small-scale services (hairstresser, phone service, massage, Karaoke, etc)	22	23	23
Small-scale food shop businesses (Food, groceries, drink shop, etc)	6	7	14
Small-scale rice mills	348	538	635
Medium or large-scale rice mills	7	7	8
Small-scale markets	1	1	1
Large-scale market	0	0	0
Alcohol refinery places	28	120	105
Pharmacies and small drug stores	3	3	3
Hotels	0	0	0
Guest houses	0	0	0
Restaurants	0	0	0
Gasoline stations	0	0	0

2.5 Agriculture

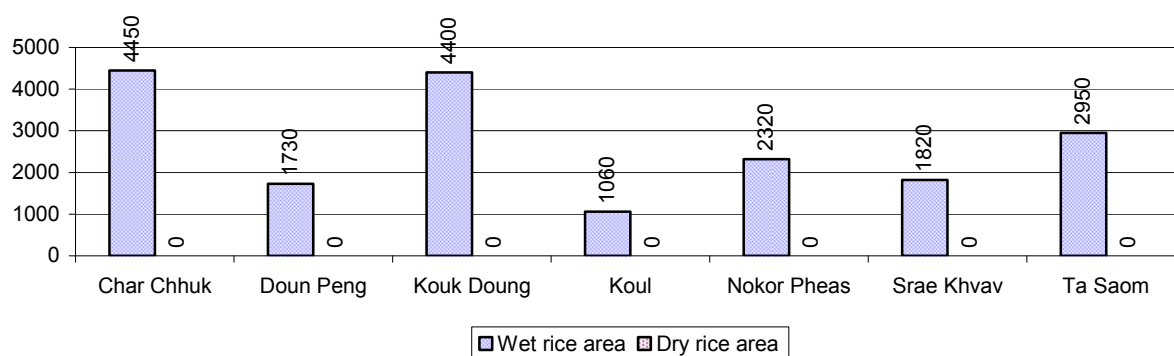
2.5.1 Rice cultivation in the District over 3 years

Description	2006	2007	2008
Total dry rice land area	0 ha	0 ha	0 ha
Actual dry rice cultivation area	0 ha	0 ha	0 ha
% actual cultivation to total land	-%	-%	-%
Total dry rice production	- tonne(s)	- tonne(s)	- tonne(s)
Average dry rice yield	- tonne(s)/ha	- tonne(s)/ha	- tonne(s)/ha
Total wet rice land area	22,565 ha	22,630 ha	22,860 ha
Actual wet rice cultivation area	19,333 ha	17,793 ha	18,730 ha
% actual cultivation to total land	86 %	79%	82%
Total wet rice production	24,580.53 tonne(s)	19,368.95 tonne(s)	26,088.21 tonne(s)
Average wet rice yield	1.3 tonne(s)/ha	1.1 tonne(s)/ha	1.4 tonne(s)/ha
Total intensive rice land area	0 ha	0 ha	0 ha
Actual intensive rice cultivation area	- ha	- ha	- ha
Average intensive rice yield	- tonne(s)/ha	- tonne(s)/ha	- tonne(s)/ha
Actual upland rice cultivation area	198 ha	282 ha	139 ha
Total upland rice production	302 tonne(s)	336 tonne(s)	181 tonne(s)
Average upland rice yield	1.5 tonne(s)/ha	1.2 tonne(s)/ha	1.3 tonne(s)/ha

2.5.2 Estimated wet and dry Season Rice Yield in tonne(s)/Ha, by Commune, in 2008



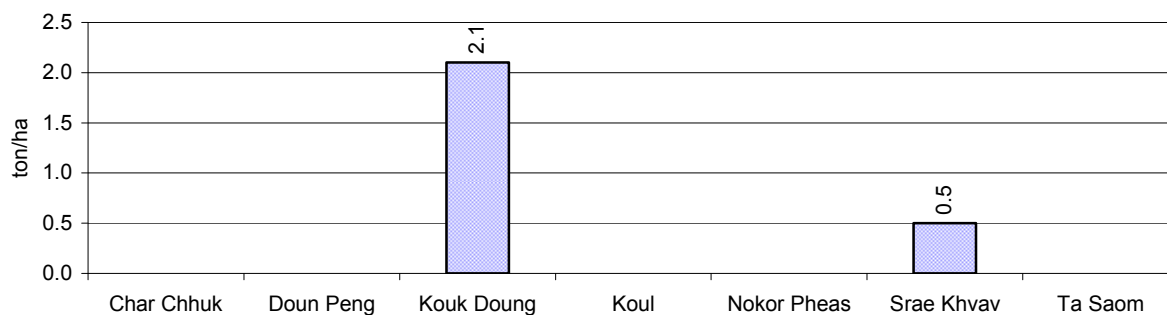
2.5.3 Cultivated wet and dry Season Rice areas in Ha, by Commune, in 2008



2.5.4 Estimated intensive Rice Yields in tonnes/Ha, by Commune, for 2008

There were no estimated intensive rice yields in this District in 2008

2.5.5 Estimated upland Rice Yield in tonnes/Ha, by Commune, for 2008

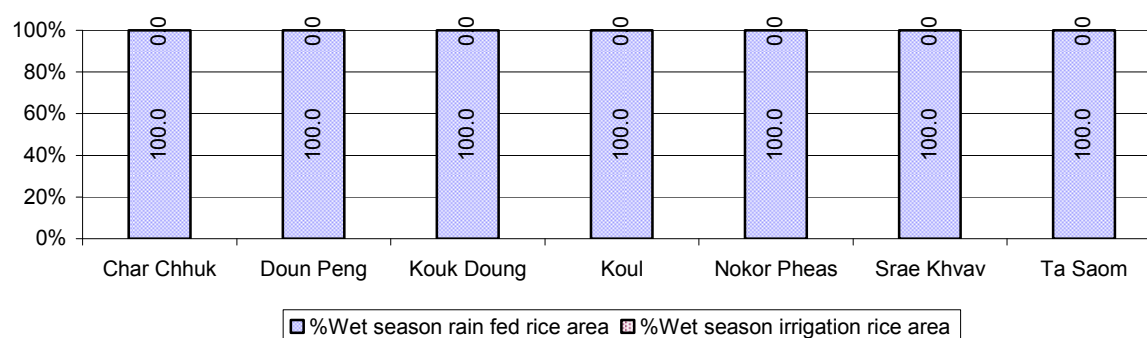


2.5.6 Wet season Rice irrigation across 3 years

Description		2006 %	2007 %	2008	
				%	Number
Total area of wet season rain fed rice land		100%	100%	100 %	18,730 ha
Percentage of wet season rice land that is irrigated; and for 2008 area in Ha		0 %	0 %	0 %	0 ha
Where	Area irrigated from canal/dam	- %	- %	- %	0 ha
	Area irrigated from river, stream, lake, natural pond	- %	- %	- %	0 ha
	Area irrigated from drilled well	- %	- %	- %	0 ha
	Area irrigated from dug pond	- %	- %	- %	0 ha

2.5.7 Water sources for wet Season Rice Cultivation, by Commune, in 2008

This chart shows the percentage of wet season rice cultivation receiving water from rain (natural) and from irrigation.



2.5.8 Access to Irrigation

Description	2006 %	2007 %	2008	
			%	Number
Families who have access to irrigation water	0%	0%	0%	0 families
Families who have irrigation wells	0%	0%	0%	0 families

Note: Calculated against the total number of families are rice farmers

2.5.9 Number of Irrigation Wells over 3 years

Description	2006	2007	2008
Number of irrigation wells	0 wells	5 wells	0 wells

2.5.10 Percentage of Families with access to (supplemental) Irrigation for wet Season Rice cultivation, by Commune, in 2008

There are no families with access to supplemental irrigation for wet season rice irrigation in this District in 2008

Note: % of families, with access to irrigation is calculated against the total number of families, whose main occupation is rice farming. Irrigated wet rice land area is calculated against the total actual wet rice land cultivated areas

2.5.11 Irrigation Wells, by Commune, in 2008

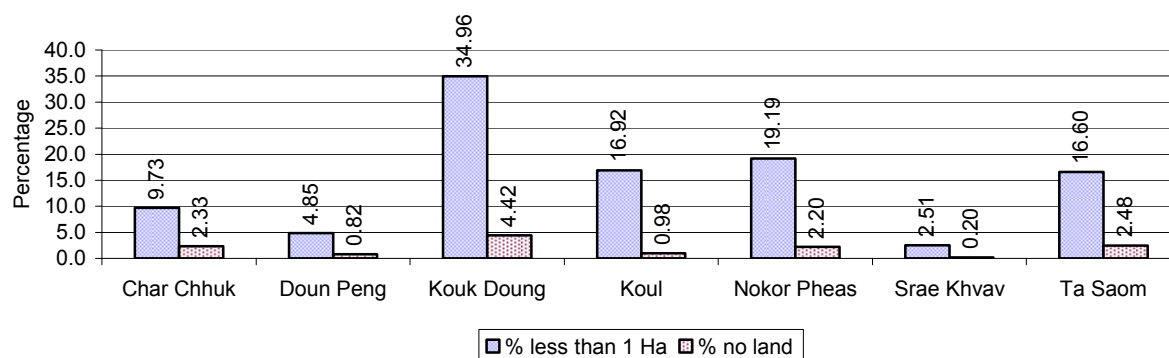
There are no irrigations wells in this District in 2008

2.5.12 Farmers owning less than one hectare of Rice Land

Description	2006 %	2007 %	2008	
			%	Number
Families who have less than one hectare of rice land	12%	16%	17%	1,841 families
Families who do not own any rice land	2%	3%	2%	247 families

Note: Calculated on basis of total number of families who are rice farming

2.5.13 Percentage of Farmers with less than one Hectare or no Rice Land, by Commune, in 2008

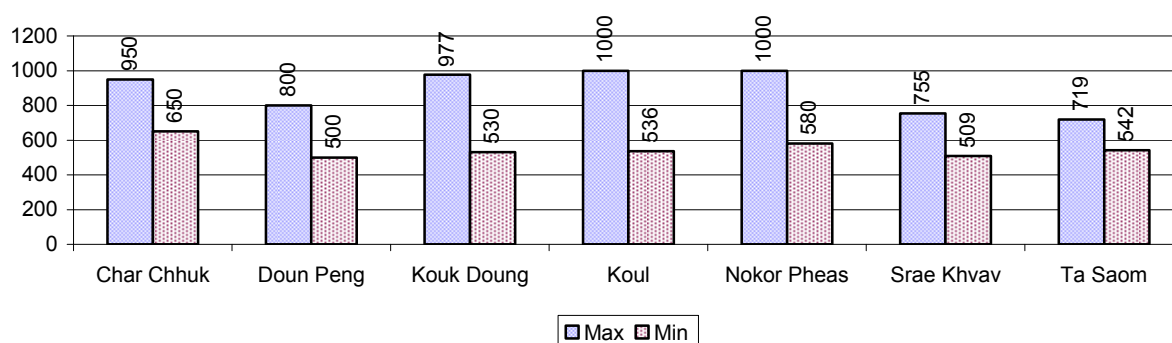


Note: Calculated on basis of total number of families who are rice farming

2.5.14 Average farm-gate Prices of Rice, over 3 years

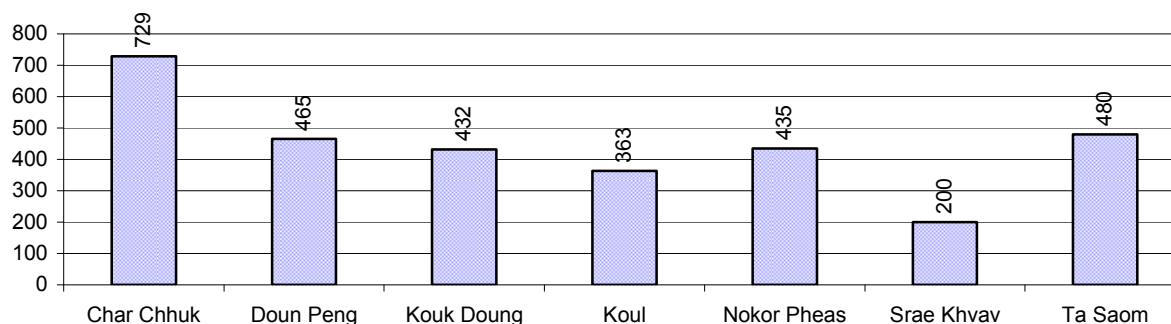
Description	2006	2007	2008
Maximum average farm gate price	529 Riels/Kg	745 Riels/Kg	886 Riels/Kg
Minimum average farm gate price	417 Riels/Kg	535 Riels/Kg	550 Riels/Kg
Average farm gate price	473 Riels/Kg	640 Riels/Kg	718 Riels/Kg
Average rice production per person	452 Kg/person	342 Kg/person	449 Kg/person

2.5.15 Minimum and maximum farm-gate Prices of Rice in Riel/kg, by Commune, in 2008



2.5.16 Production of Paddy in Kgs/Person, by Commune, in 2008

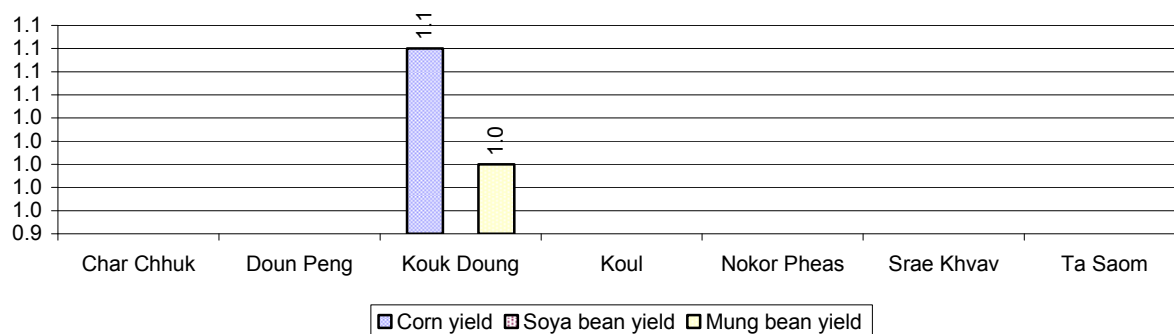
This table shows how much paddy (harvested rice) is produced in a year in a commune, in kgs per person.



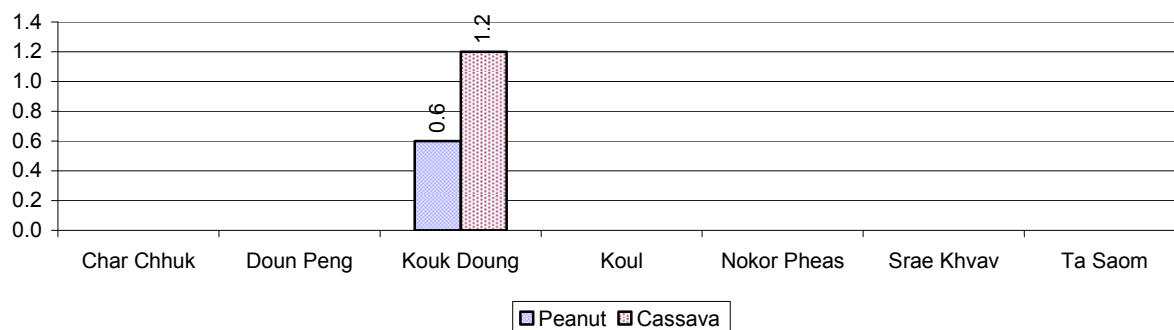
2.5.17 Production of other Crops, over 3 years

Crops	2006	2007	2008
Corn cultivation area	7 ha	5 ha	6 ha
Estimated corn yield	0.7 tonne(s)/ha	1.0 tonne(s)/ha	1.1 tonne(s)/ha
Estimated corn production	5 tonne(s)	5 tonne(s)	7 tonne(s)
Soya bean cultivation area	0 ha	0 ha	0 ha
Estimated Soya bean yield	- tonne(s)/ha	- tonne(s)/ha	- tonne(s)/ha
Estimated Soya bean production	- tonne(s)	- tonne(s)	- tonne(s)
Mungbean cultivation area	7 ha	2 ha	3 ha
Estimated Mungbean yield	0.7 tonne(s)/ha	1.0 tonne(s)/ha	1.0 tonne(s)/ha
Estimated Mungbean production	5 tonne(s)	2 tonne(s)	3 tonne(s)
Peanut cultivation area	0 ha	1 ha	1 ha
Estimated Peanut yield	- tonne(s)/ha	0.5 tonne(s)/ha	0.6 tonne(s)/ha
Estimated Peanut production	- tonne(s)	1 tonne(s)	1 tonne(s)
Cassava cultivation area	5 ha	5 ha	4 ha
Estimated Cassava yield	1.6 tonne(s)/ha	1.0 tonne(s)/ha	1.2 tonne(s)/ha
Estimated Cassava production	8 tonne(s)	5 tonne(s)	5 tonne(s)
Sweet potatoes cultivation area	5 ha	2 ha	3 ha
Estimated Sweet potatoes yield	0.3 tonne(s)/ha	1.0 tonne(s)/ha	1.0 tonne(s)/ha
Estimated Sweet potatoes production	2 tonne(s)	2 tonne(s)	3 tonne(s)
Sesame cultivation area	2 ha	0 ha	1 ha
Estimated Sesame yield	0.1 tonne(s)/ha	- tonne(s)/ha	0.4 tonne(s)/ha
Estimated Sesame production	0 tonne(s)	- tonne(s)	0 tonne(s)

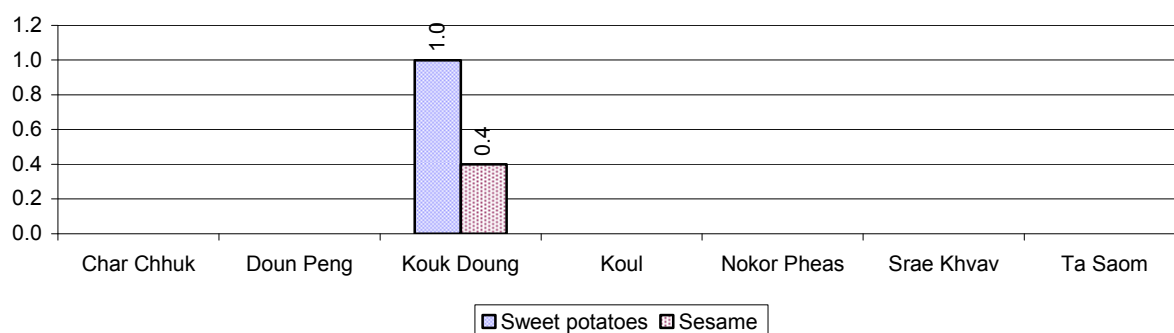
2.5.18 Yields of Corn, Soya beans and Mungbeans in tonne(s)/ha, by Commune, in 2008



2.5.19 Yields of Peanuts and Cassava in tonne(s)/ha by Commune, in 2008



2.5.20 Yields of Sweet Potatoes and Sesame in tonne(s)/ha, by Commune, in 2008



2.5.21 Percentage Farmers who own less than 1 Ha or no Chamkar land

Description	2006 %	2007 %	2008	
			%	Number
Families, who own less than 1ha of Chamkar land	-%	24%	0%	0 families
Families, with no Chamkar land	-%	0%	0%	0 families

Note 1: Calculated as a percentage of the total number of families whose main occupation is Chamkar (not rice) farming

Note 2: Chamkar land is no-rice land, i.e. other crops

2.5.22 Percentage Farmers owning less than 1 ha or no Chamkar land, by Commune, in 2008

There were no Farmers owning less than 1 ha or no Chamkar land in this District in 2008

Note: Percentage is calculated among families, who Chamkar farm as a main occupation, not the total population of the commune.

2.5.23 Percentage of Families raising Cattle/Buffalo, over 3 years

Description	2006 %	2007 %	2008	
			%	Number
Families raising cattle/buffalo	87%	86%	87%	9,627 families
Families raising cattle/buffalo as labor forces	84%	77%	76%	8,395 families

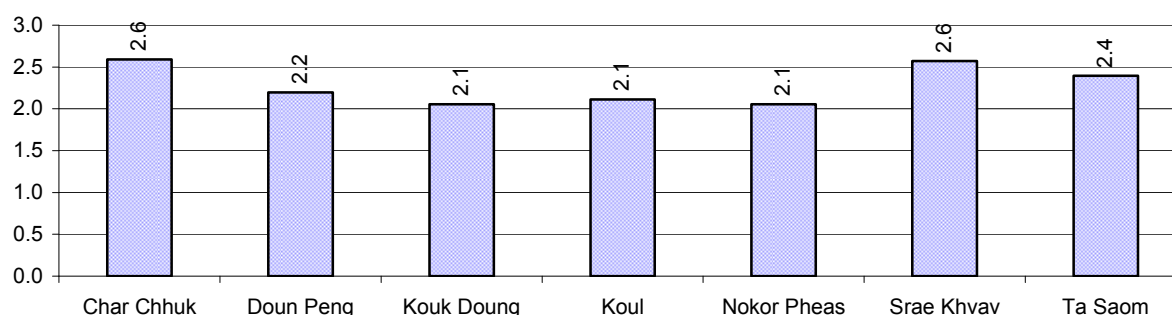
Note: Calculated against the total number of families.

2.5.24 Number of Cattle/buffalo being raised, over 3 years

Description	2006	2007	2008
Total number of cattle/buffalo	20,697 head(s)	21,148 head(s)	21,909 head(s)
Average cattle/buffalo per families	2.2 head(s)/families	2.3 head(s)/families	2 head(s)/families

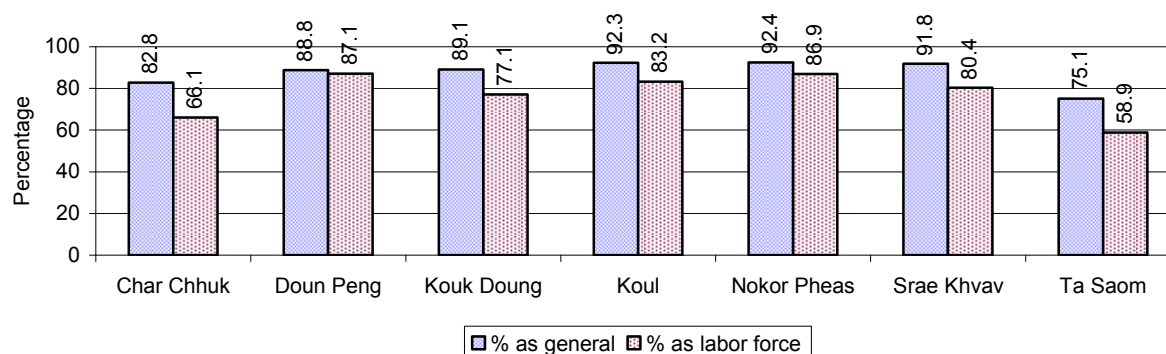
Note: Calculated by dividing total number of cattle/buffalo by total number of cattle/buffalo raising families

2.5.25 Average number of Cattle/Buffalo per Family, by Commune, in 2008



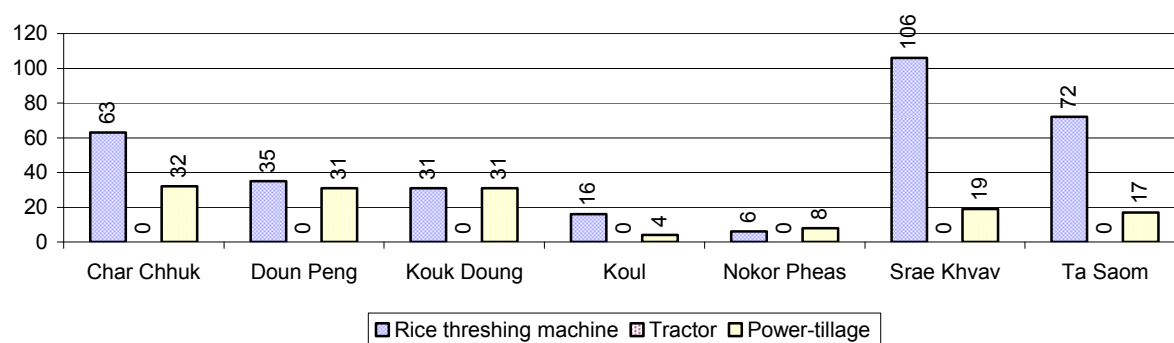
Note: Calculated by dividing total number of cattle/buffalo by total number of cattle/buffalo raising families

2.5.26 Percentage Families raising Cattle/Buffalo, for general and labor purposes in 2008, by Commune



Note: Calculated using the total number of families raising cattle/buffalo against the total number of families.

2.5.27 Type and number of agricultural Machines, by Commune, in 2008

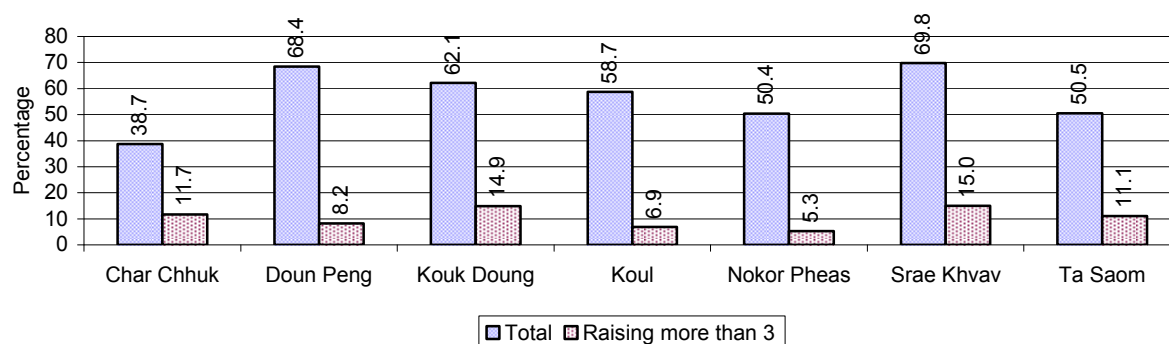


2.5.28 Livestock-producing Households over 3 years

Description	2006	2007	2008	
	%	%	%	Number
Total number of families raising pigs	65%	59%	57%	6,260 families
number of families raising more than 3 pigs	10%	12%	11%	1,248 families
Total number of families raising chickens	90%	87%	88%	9,796 families
number of families raising more than 3 chickens	62%	66%	70%	7,737 families
Total number of families raising ducks	21%	27%	24%	2,662 families
number of families raising more than 5 ducks	17%	18%	20%	2,257 families
Total number of families raising goats or sheep	0%	0%	0%	0 families
Total number of families raising horses	0%	0%	0%	4 families

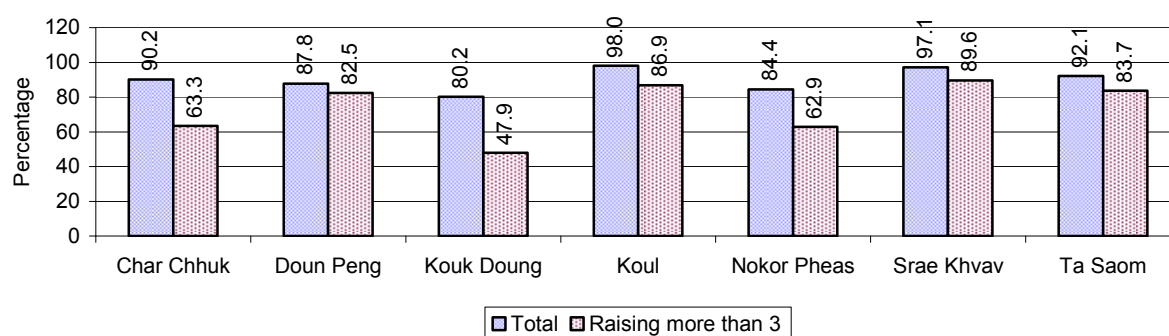
Note: Calculated against the total number of families

2.5.29 Percentage Families raising Pigs, by Commune, in 2008



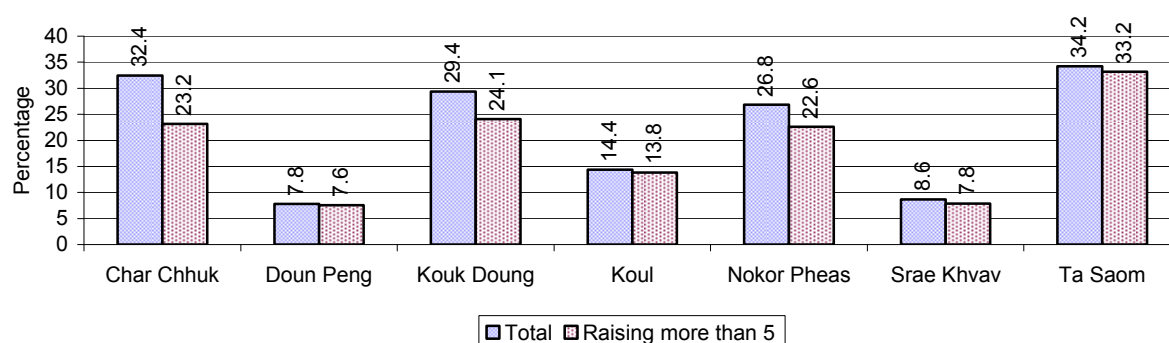
Note: Calculated against the total number of families in the commune

2.5.30 Percentage Families raising Chickens, by Commune, in 2008



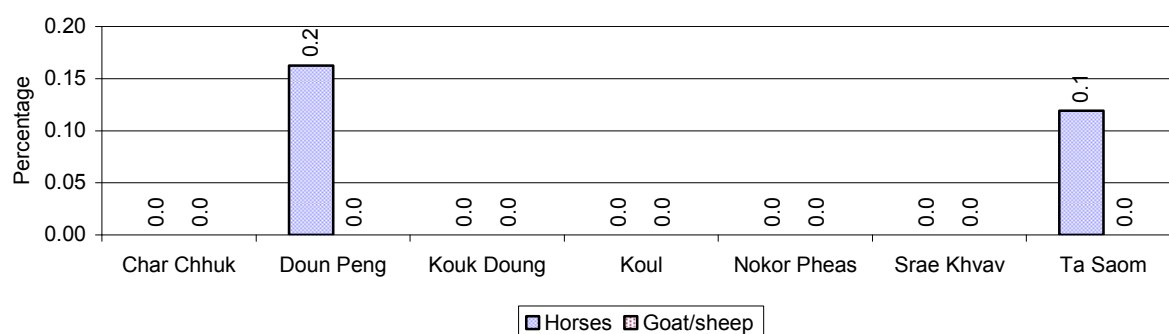
Note: Calculated against the total number of families in the commune

2.5.31 Percentage Families raising Ducks, by Commune, in 2008



Note: Calculated against the total number of families in the commune

2.5.32 Percentage Families raising Horses, Goats or Sheep, by Commune, in 2008



Note: Calculated against the total number of families in the commune

2.5.33 Livestock Farms over 3 years

Description	2006	2007	2008
Number of cattle/buffalo farms	20 farm(s)	0 farm(s)	0 farm(s)
Number of pig farms	0 farm(s)	0 farm(s)	0 farm(s)
Number of goat/sheep farms	0 farm(s)	0 farm(s)	0 farm(s)
Number of chicken farms	0 farm(s)	1 farm(s)	0 farm(s)
Number of duck farms	0 farm(s)	0 farm(s)	0 farm(s)

2.5.34 Number Livestock Farms, by Commune in 2008

There were no farms of this type in this District in 2008

Note: Number of farms are recorded by the village chief, not by counting number of livestock in each farm

2.5.35 Number Chicken and Duck Farms, by Commune, for 2008

There were no farms of this type in this District in 2008

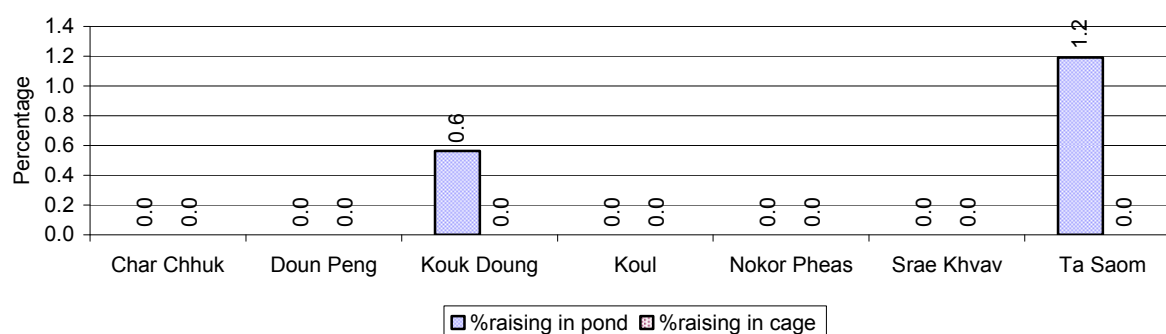
Note: Number of farm places recorded by village chief, not by counting number of livestock in each farm

2.5.36 Families raising Fish over 3 years

Description	2006	2007	2008
Total number of families raising fish	12 families	77 families	35 families
% families raising fish	0%	1%	0%
Number families raising fish in pond	12 families	77 families	35 families
% families raising fish in pond	0%	1%	0%
Number fish pond	12 pond(s)	46 pond(s)	35 pond(s)
No. of ponds per family	1.0 pond/families	0.6 pond/families	1.0 pond/families
Number of families raising fish in cage	0 families	0 families	0 families
%families raising fish in cage	0 %	0 %	0%
Number of fish cage	0 cage(s)	0 cage(s)	0 cage(s)
No. of fish cage per family	- cage /families	- cage /families	- cage /families

Note: % of families raising fish or fish in ponds or cages is calculated a percentage of the total number of families.

2.5.37 Percentage of Families raising Fish, by Commune, in 2008



Note: Calculated as a percentage of the total number of families in the commune.

2.5.38 Shrimp and Prawn Farming over 3 years

Description	2006	2007	2008
Number of families raising shrimps	0 families	0 families	0 families
% Families raising shrimps	0%	0%	0%
Number of shrimp ponds	0 pond	0 pond	0 pond
Total area raising shrimps	0 ha	0 ha	0 ha
Area per family	-ha/families	-ha/families	-ha/families
Number of families raising prawns	0 families	0 families	0 families
% families raising prawns	0%	0%	0%
Number prawn ponds	0 pond	0 pond	0 pond
Ponds per families	- pond/families	-pond/families	-pond/families
Number of prawn cages	0 cage	0 cage	0 cage
Cages per families	0 cage /families	0 cage /families	0 cage /families

Note: Percentage of families raising either prawns or shrimp is calculated against the number of families, who do aquaculture farming, NOT the total population.

2.5.39 Numbers of Families raising Shrimps and number of Shrimp Ponds, by Commune, in 2008

There were none of these in this District in 2008

2.5.40 Number of Families raising Prawn and Number of Prawn Ponds/Cages, by Commune, in 2008

There were none of these in this District in 2008

3 Social Aspects

3.1 Education

3.1.1 Kindergarten in the District over 3 years

Description	2006	2007	2008
Number of community kindergarten schools	0 school(s)	0 school(s)	1 school(s)
Number of community kindergarten class rooms	0 room(s)	0 room(s)	1 room(s)
Number of community kindergarten classes	0 class(es)	0 class(es)	1 class(es)
Number of community kindergarten teachers	0 person(s)	0 person(s)	1 person(s)
Number of women community kindergarten teachers	0 women	0 women	1 women
Number of state and private kindergarten schools	0 school(s)	2 school(s)	6 school(s)
Number of state and private kindergarten class rooms	0 room(s)	2 room(s)	6 room(s)
Number of state and private kindergarten classes	0 class(es)	2 class(es)	6 class(es)
Number of state and private kindergarten teachers	0 person(s)	2 person(s)	6 person(s)
Number of women state and private kindergarten teachers	0 women	0 women	6 women

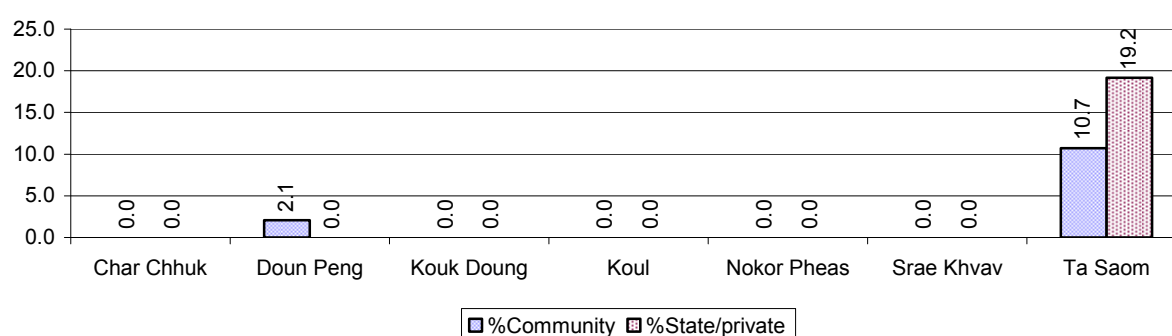
3.1.2 Percentage enrolment at Kindergarten level over 3 years

This table shows the percentage of the total 3-5 year old population attending kindergarten.

Description	2006 %	2007 %	2008	
			%	Number
Total percentage of children, 3-5 yrs, go to kindergarten	3%	0%	5%	222 person(s)
Percentage of children, 3-5 yrs, go community kindergarten	1%	0%	2%	86 person(s)
Percentage children, 3-5 yrs, go state/private kindergarten	2%	0%	3%	136 person(s)

Note: Calculated against the total for that age group

3.1.3 Percentage of Children 3-5 yrs attending Kindergarten, by Commune, in 2008



3.1.4 Basic Education over 3 years

Primary School

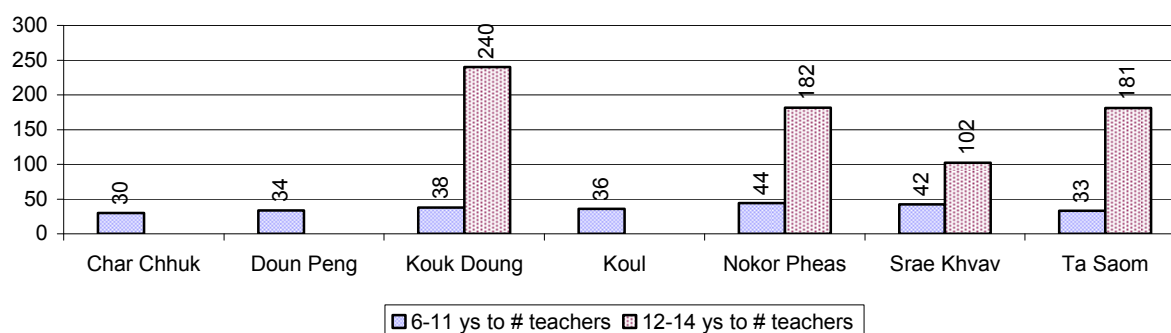
Description	2006	2007	2008
Number of primary schools	50 school(s)	50 school(s)	54 school(s)
Number of primary school rooms	210 room(s)	212 room(s)	241 room(s)
Number of primary classes	274 class(es)	281 class(es)	305 class(es)
Number of primary teachers	203 person(s)	215 person(s)	225 person(s)
Ratio of children 6-11 yrs to school	144	163	153
Ratio of children 6-11 yrs to school room	34	38	34
Ratio of children 6-11 yrs to class	26	29	27
Ratio of children 6-11 yrs to teacher	35	38	37

Note: According to education norm, children 6-11 yrs should attend primary school, while 12-14 yrs should be in lower secondary school, but in reality this varies.

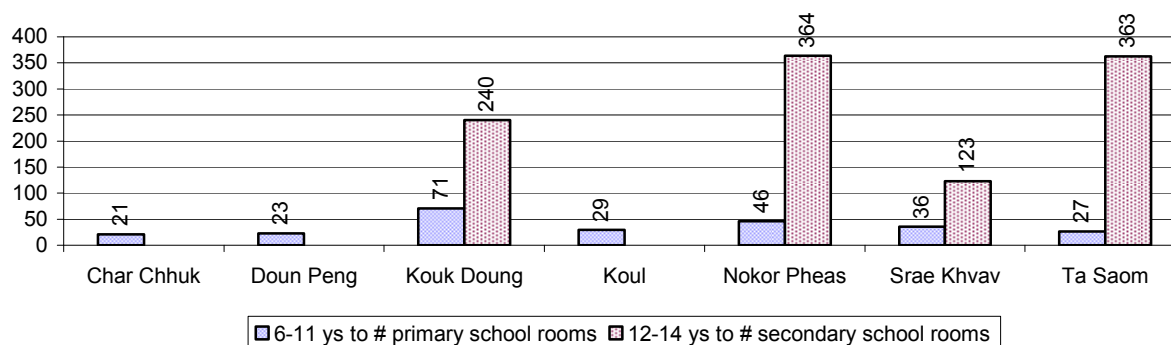
Lower Secondary School

Description	2006	2007	2008
Number of lower secondary schools	5 school(s)	3 school(s)	4 school(s)
Number of lower secondary school rooms	29 room(s)	12 room(s)	14 room(s)
Number of lower secondary classes	29 class(es)	12 class(es)	19 class(es)
Number of lower secondary teachers	36 person(s)	14 person(s)	19 person(s)
Ratio children 12-14 yrs to school	887	1,577	1,160
Ratio of children 12-14 yrs to school room	153	394	331
Ratio of children 12-14 yrs to class	153	394	244
Ratio of children 12-14 yrs to teacher	123	338	244

3.1.5 Ratio of 6-11 year old and 12-14 year old Children to number of Teachers, by Commune, in 2008



3.1.6 Ratio of 6-11 year old and 12-14 year old Children to number of School Rooms, by Commune, in 2008



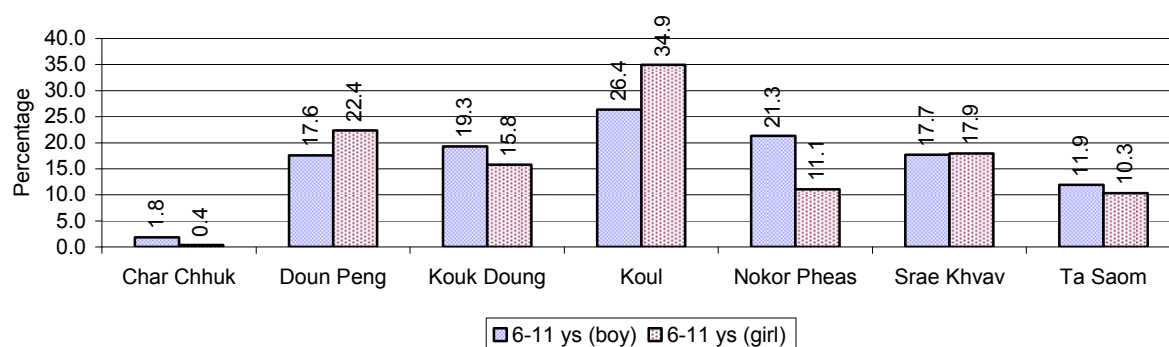
3.1.7 Enrolment status at Primary Level over 3 years

Description	2006 %	2007 %	2008	
			%	Number
Total children aged 6-11 years old	13%	14%	14%	8,265 person(s)
Total children aged 6-11 who are in school	81%	83%	85%	6,985 person(s)
Total children aged 6-11 who are not in school	19%	17%	15%	1,280 person(s)
Total girls aged 6-11 years old	13%	14%	13%	4,059 person(s)
Total girls aged 6-11 who are in school	80%	84%	85%	3,468 person(s)
Total girls aged 6-11 who are not in school	20%	16%	15%	591 person(s)
Total boys aged 6-11 years old	13%	15%	15%	4,206 person(s)
Total boys aged 6-11 who are in school	81%	83%	84%	3,517 person(s)
Total boys aged 6-11 who are not in school	19%	17%	16%	689 person(s)

Note 1: Percentage is calculated on the basis of the total number of children within 6-11 year age group for the first 3 rows and for the total girls and the total boys aged 6-11 yrs.

Note 2: Number of girls aged 6-11 who are in & not in school is calculated against the total number of girls aged 6-11 yrs. Number boys, 6-11 yrs who are in & not in school are calculated against the total number of boys aged 6-11 yrs.

3.1.8 Percentage of 6-11 year old Children not in School, by Commune, in 2008



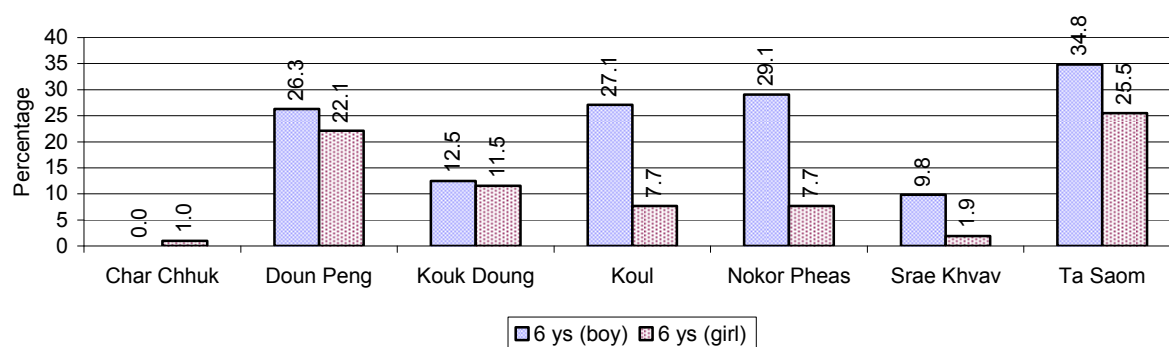
Note: calculated on the basis of the total number of children within 6-11 year age group in the commune.

3.1.9 Enrolment of 6 year old Children over 3 years

Description	2006 %	2007 %	2008	
			%	Number
Total % and number of children aged 6 years old	3%	4%	3%	2,039 person(s)
Total % of children aged 6 years old in school	66%	72%	82%	1,672 person(s)
Total % of children aged 6 years old not in school	34%	28%	18%	367 person(s)

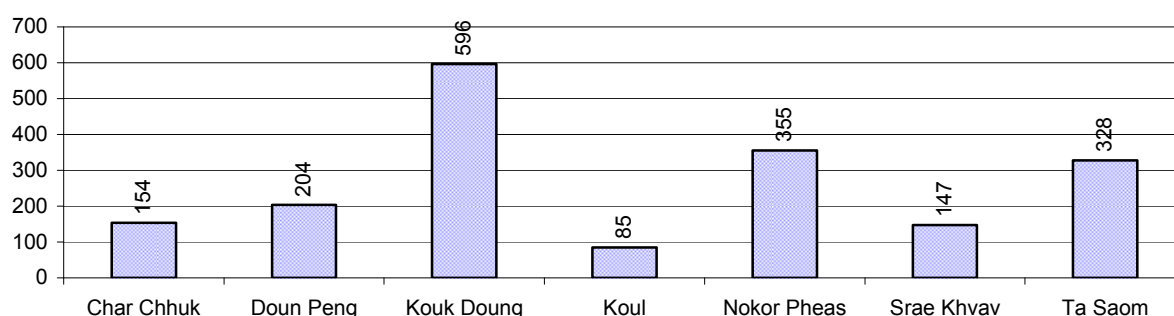
Note: First row calculated as a percentage of total population. Second and third row calculated as a percentage of the total number of 6 year olds.

3.1.10 Percentage of 6 year old Children not in School, by Commune, in 2008



Note: Calculated as a percentage of total 6 year old population

3.1.11 Number of 5 year old Children in each Commune in 2008

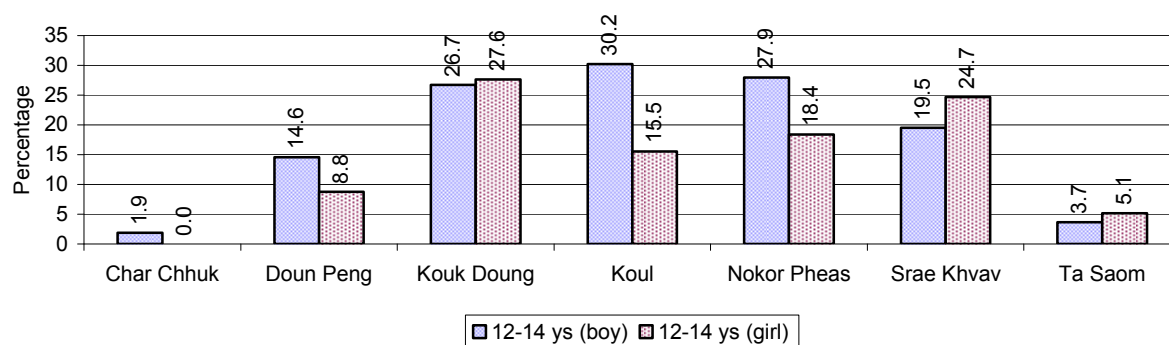


3.1.12 Enrolment at Lower Secondary Level over 3 years

Description	2006 %	2007 %	2008	
			%	Number
Total children aged 12-14 years old	8%	8%	8%	4,640 person(s)
Children aged 12-14 years old in school	81%	85%	83%	3,856 person(s)
Children aged 12-14 years old not in school	19%	15%	17%	784 person(s)
Total girls aged 12-14 years old	8%	8%	8%	2,361 person(s)
Girls aged 12-14 years old in school	79%	85%	84%	1,980 person(s)
Girls aged 12-14 years old not in school	21%	15%	16%	381 person(s)
Total boys aged 12-14 years old	8%	8%	8%	2,279 person(s)
Boys aged 12-14 years old in school	83%	84%	82%	1,876 person(s)
Boys aged 12-14 years old not in school	17%	16%	18%	403 person(s)

Note: Percentage is calculated on the basis of number of the total number of children within 12-14 yrs group, except for the first row of each section which is calculated on the basis of the total population.

3.1.13 Percentage of 12-14 year olds not in School, by Commune, in 2008



Note: Calculated as a percentage of the total 12-14 year old population in each commune

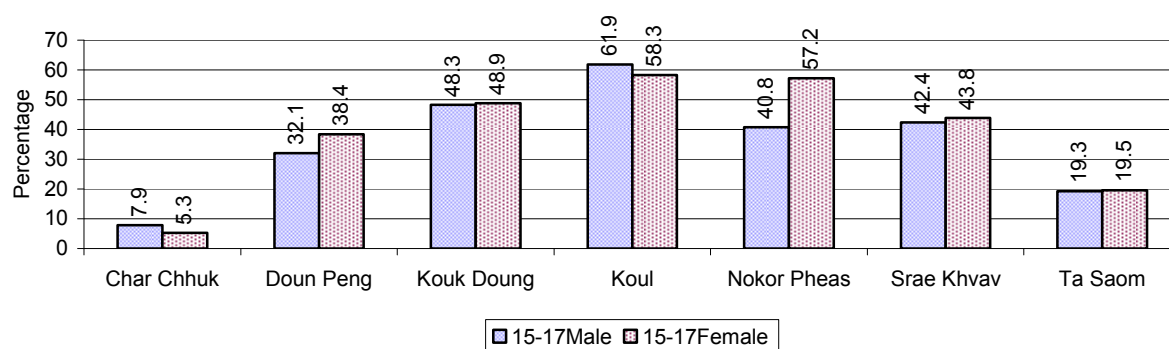
3.1.14 Upper Secondary Schools over 3 years

Description	2006	2007	2008
Number of upper secondary schools	0 school(s)	1 school(s)	1 school(s)
Number of upper secondary school rooms	0 room(s)	24 room(s)	30 room(s)
Number of upper secondary classes	0 class(es)	24 class(es)	24 class(es)
Number of upper secondary teachers	0 person(s)	37 person(s)	36 person(s)
Ratio of 15-17 yr olds to number of school	N/A	4,816	4,884
Ratio of 15-17 yr olds to number of school room	N/A	201	163
Ratio of 15-17 yr olds to number of classes	N/A	201	204
Ratio of 15-17 yr olds to number of teacher	N/A	130	136

3.1.15 Enrolment of 15-17 year old teenagers over 3 years

Description	2006	2007	2008
Number of teenage, 15-17 years old	4,614 person(s)	4,816 person(s)	4,884 person(s)
Number of teenage, 15-17 years old, who are not studying	1,902 person(s)	1,877 person(s)	1,777 person(s)
Percentage of teenage, 15-17 years old not studying	41%	39%	36%

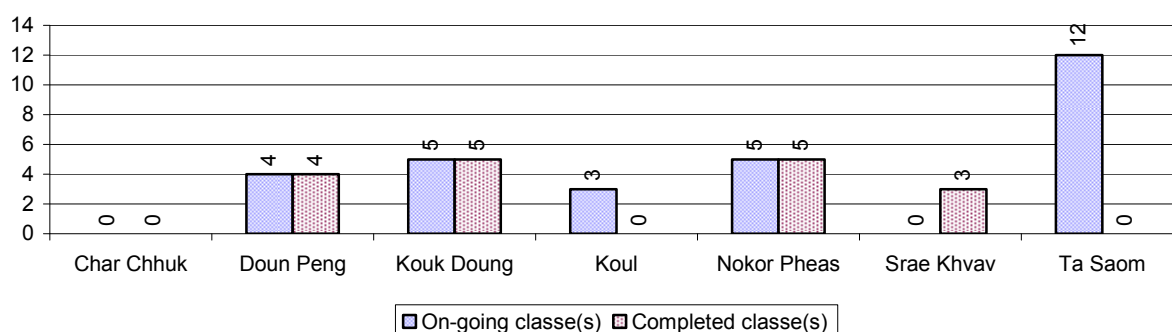
3.1.16 Percentage of 15-17 year old Teenagers not at School, by Commune, in 2008



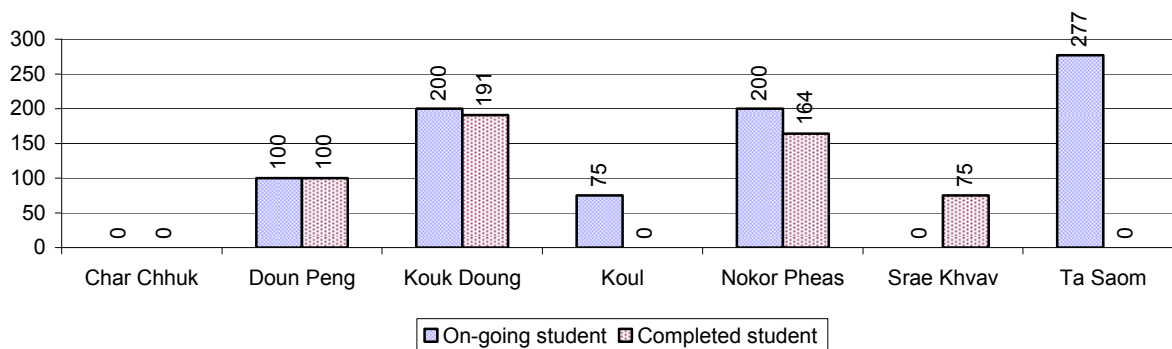
3.1.17 Literacy Classes as of 2008

Literacy classes	Organized by:		Other Program(s)	Total
	PDoEYS	NGOs		
Number of On-going literacy classes	10 class(es)	17 class(es)	2 class(es)	29 class(e(s)
Number of literacy students in on-going classes	400 person(s)	402 person(s)	50 person(s)	852 person(s)
Completed literacy class(es)	10 classes	5 classes	2 classes	17 classes
Number of literacy students that have completed literacy classes	355 person(s)	125 person(s)	50 person(s)	530 person(s)
Number of students that passed	333 person(s)	122 person(s)	50 person(s)	505 person(s)

3.1.18 Number of on-going and completed Literacy Classes, by Commune, in 2008



3.1.19 Students of on-going & completed Literacy Classes, by Commune, in 2008

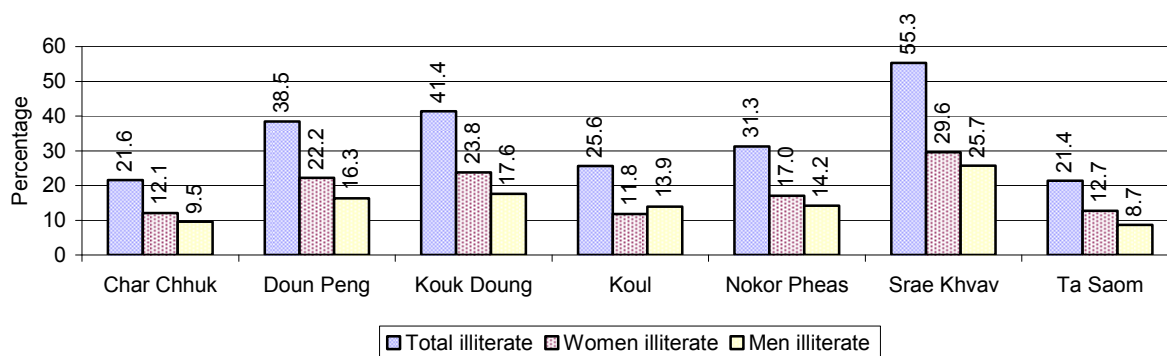


3.1.20 Percentage of illiterate People between 15-60, over 3 years

Illiteracy Status	2006 %	2007 %	2008	
			%	Number
Illiterate people, 15-60 years old	35%	38%	34%	11,757 person(s)
Illiterate females, 15-60 years old	19%	21%	19%	6,540 person(s)
Illiterate people, 15-17 years old	16%	15%	13%	624 person(s)
Illiterate females, 15-17 years old	8%	7%	6%	297 person(s)
Illiterate people, 18-24 years old	29%	29%	24%	2,047 person(s)
Illiterate females, 18-24 years old	14%	15%	12%	1,042 person(s)
Illiterate people, 25-60 years old	42%	47%	42%	9,086 person(s)
Illiterate females, 25-60 years old	24%	27%	24%	5,201 person(s)

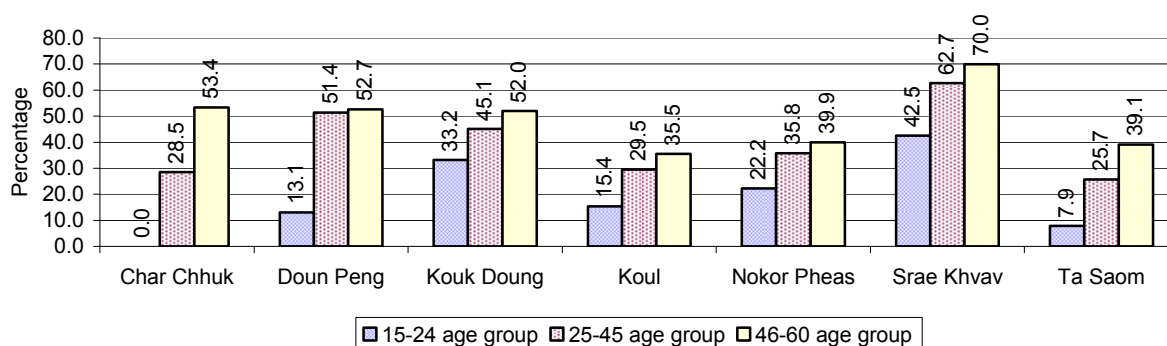
Note: Percentage is calculated on the basis of number of people in age group.

3.1.21 Percentage illiterate People among 15-60 yrs old, by Commune, in 2008



Note: Percentages are calculated on the basis of number of people in that age group.

3.1.22 Percentage illiterate People for 15-24 yrs, 25-45 yrs and 46-60 yrs, by Commune, in 2008



Note: Percentage of illiterate people in each age group is calculated on the basis of number of people in that age group.

3.2 Health

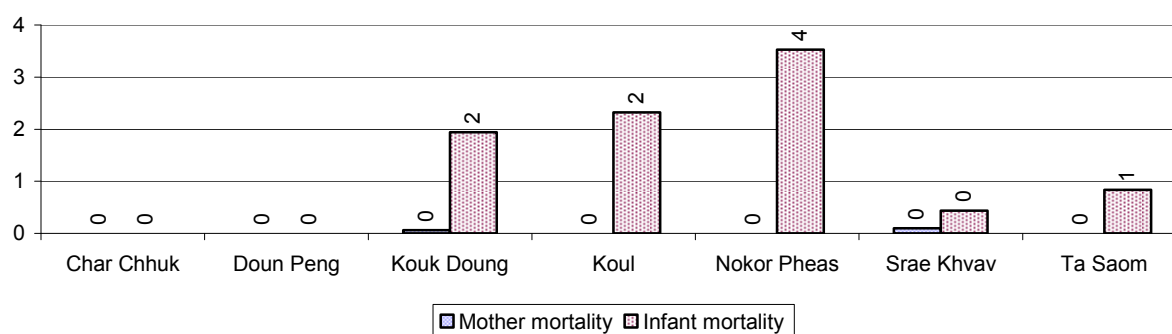
3.2.1 Health Situation of Women and Children, over 3 years

Description	2006	2007	2008
Number families with a birth during the year	966 families	987 families	1,205 families
Number of women who had their baby delivered by a TBA	585 person(s)	478 person(s)	337 person(s)
Percentage of women who had their baby delivered by a TBA	61 %	48 %	28 %
Number of women who had their baby delivered by a midwife	381 person(s)	509 person(s)	868 person(s)
Percentage of women had their baby delivered by a midwife	39 %	52 %	72 %
Number of mothers who died within 1 month of giving birth	7 person(s)	3 person(s)	2 person(s)
Mothers who died within 1 month of giving birth per 100,000 families having a delivery	725	304	166
Number of infants born during the year	966 person(s)	987 person(s)	1,207 person(s)
Number of Infants who died within 1 month	31 person(s)	13 person(s)	8 person(s)
Infants mortality within 1 month per 1,000 births	32	13	7

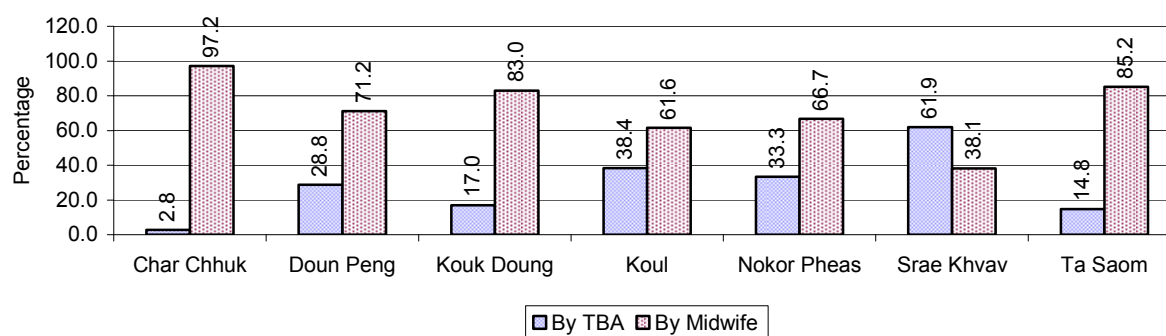
Description	2006	2007	2008
Number of children who died below the age of 5.	27 person(s)	32 person(s)	15 person(s)
Number of infants, aged 9-12 months, born during the year	590 person(s)	613 person(s)	819 person(s)
Nr. infants, aged 9-12 months, not receiving full immunization	40 person(s)	5 person(s)	38 person(s)
% of 9-12 months infants, not receiving full immunization	7 %	1 %	5 %

Note: TBA = Traditional Birth Attendant

3.2.2 Mothers dying within 0 days to 1 month of giving Birth and Infants dying within 1 month in 2008, by Commune

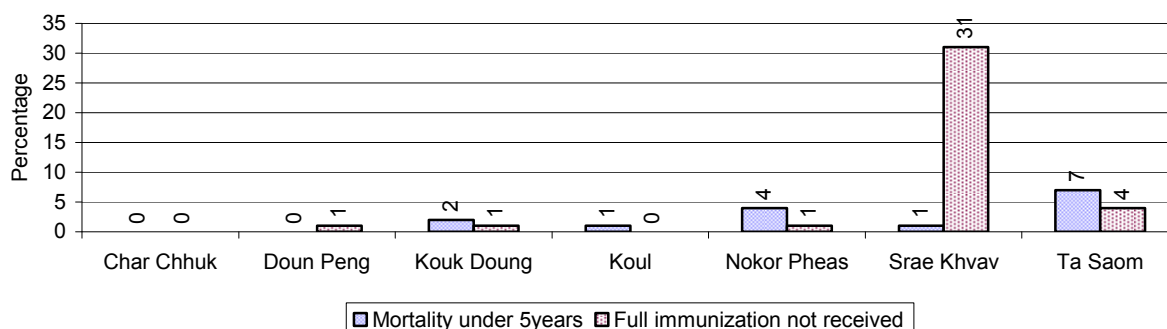


3.2.3 Percentage of Women delivering with a TBA or Midwife, by Commune



Note: Calculated as a percentage of total deliveries

3.2.4 Percentage of Children dying below 5 & of 9-12 months not receiving full Immunization, by Commune, in 2008



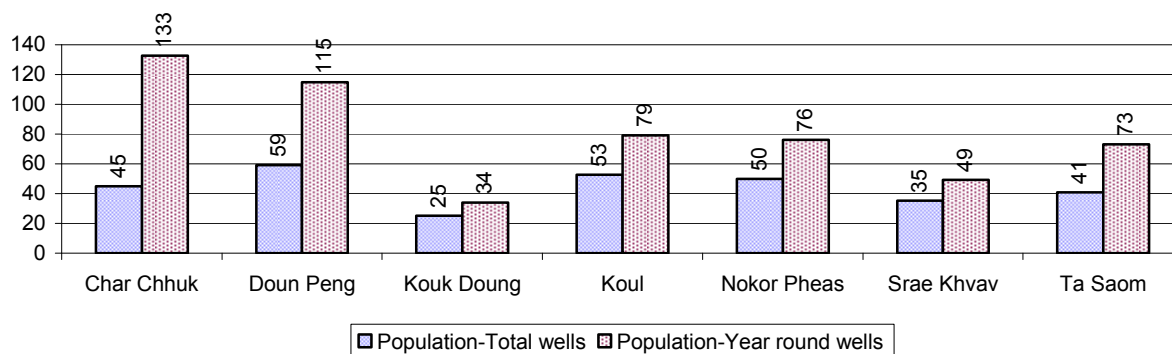
Note: Mortality rate calculated as a percentage of the total 5 year old population. Lack of immunization received calculated as a percentage of the total number 9-12 months olds there are

3.3 Water and Sanitation

3.3.1 Number of different types of Wells over 3 years

Type of wells	Number of wells by year		
	2006	2007	2008
<i>Total number of pumped or mixed wells</i>	37	561	590
Year-round usable pumped or mixed wells	24	414	444
Dry season unusable pump or mixed wells	13	147	146
Pump or mixed wells needing repair/rehabilitation	15	120	130
<i>Total number of ring wells</i>	803	851	953
Year-round usable ring wells	396	443	525
Dry season unusable ring wells	407	408	428
Ring wells needing repair/rehabilitation	293	275	280
<i>Total number of unprotected dug wells</i>	492	601	626
Year-round usable unprotected dug wells	297	397	390
Dry season unusable unprotected dug wells	195	204	236

3.3.2 Ratio of People to Wells, by Commune, in 2008

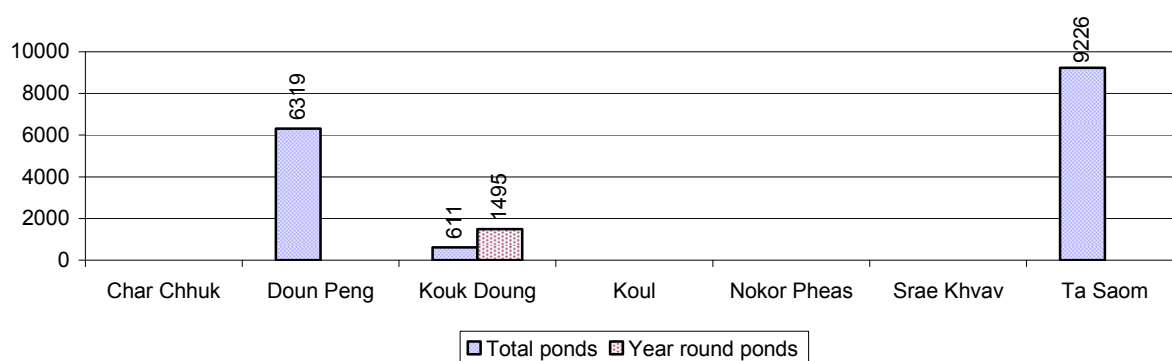


Note: Year-round wells excluding unprotected wells

3.3.3 Potable Ponds over 3 years

Type of Pond	2006	2007	2008
<i>Total number of normal-type ponds</i>	4 pond	39 pond	24 pond
Year-round usable normal-type ponds	3 pond	9 pond	9 pond
Dry season unusable normal-type ponds	1 pond	30 pond	15 pond
Normal-type ponds needing repair/rehabilitation	7 pond	40 pond	14 pond
<i>Total number of filter ponds</i>	0 pond	0 pond	0 pond
Year-round usable filter ponds	0 pond	0 pond	0 pond
Filter ponds, dry season unusable	0 pond	0 pond	0 pond
Filter ponds needing repair/rehabilitate	1 pond	0 pond	0 pond

3.3.4 Ratio of People to normal Ponds, by Commune in 2008



3.3.5 Ratio of People to Filter Ponds, by Commune, in 2008

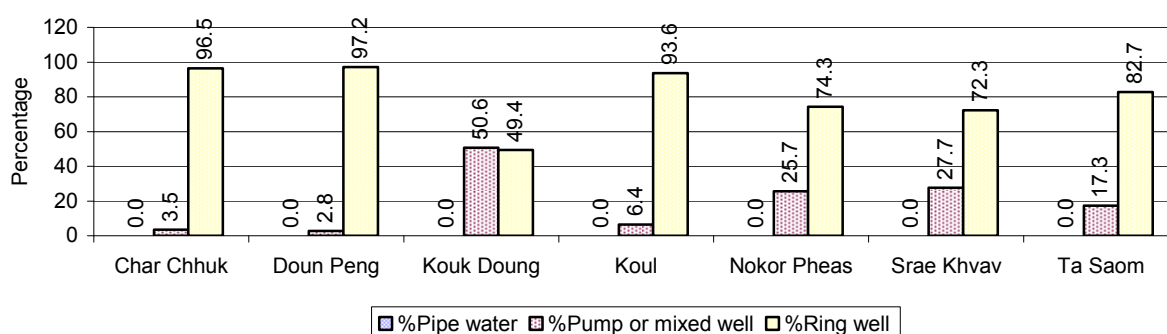
There were no filter ponds in this District in 2008

3.3.6 Source of potable Water for Households, over 3 years

Water sources	2006	2007	2008	
	%	%	%	Number
Families using water from purification system	0%	0 %	0 %	0 families
Families using water from pump, mixed wells	2%	10 %	23 %	2,584 families
Families using water from ring wells and open dug wells	98%	88 %	77 %	8,486 families
Families using water from pond	1%	2 %	0 %	0 families
Families using water from rain water storage	0%	0 %	0 %	0 families
Families using water from rivers, lakes, natural ponds and reservoirs	0%	0 %	0 %	0 families

Note: Calculated as a percentage of the total number of families.

3.3.7 Percentage Families using different Water Sources, by Commune, in 2008



Note: Calculated as a percentage of the total number of families in each commune

3.3.8 Percentage Families using Water from Rain Water Storage, Ponds and natural Sources (rivers/lakes/natural ponds/reservoirs), by Commune, 2008

There were no Families using Water from Rain Water Storage, Ponds and natural Sources (rivers/lakes/natural ponds/reservoirs) in this District in 2008

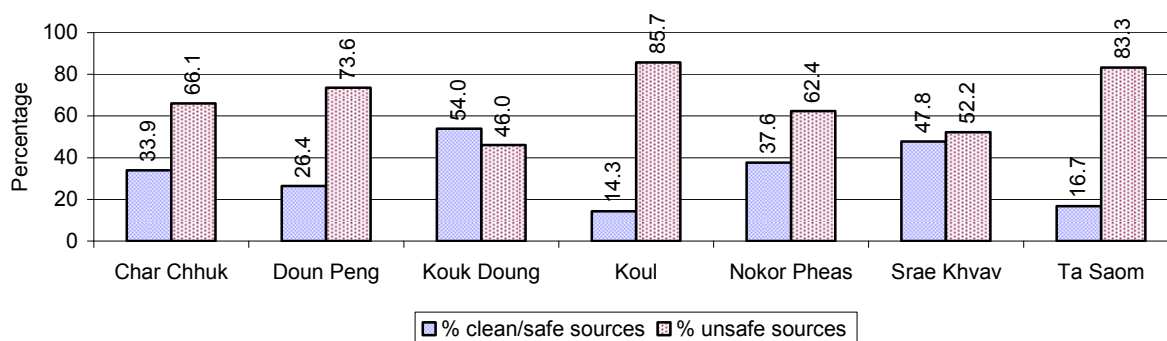
Note: Calculated as a percentage of the total number of families in each commune

3.3.9 Drinking Water Sources in the dry Season over 3 years

Percentage Families that get drinking water from:	2006	2007	2008	
	%	%	%	Number
from clean/safe sources	8 %	26 %	36 %	4,032 families
from unsafe sources	92 %	74 %	64 %	7,038 families

Note: Calculated as a percentage of the total number of families.

3.3.10 Percentage Families using safe and unsafe Water Sources in the dry Season, by Commune, in 2008



Note: Calculated as a percentage of the total number of families in each commune.

3.3.11 Drinking Water Purification by Households, over 3 years

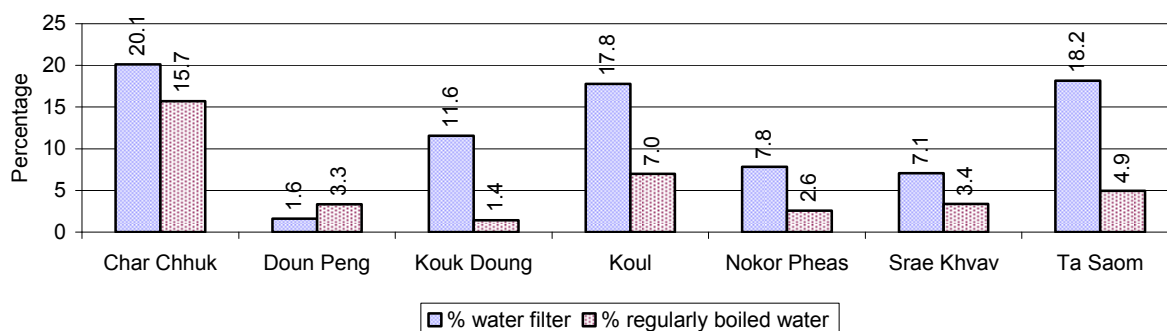
This table shows the different ways families make water safe for drinking.

Families, who:	2006	2007	2008	
	%	%	%	Number
Filter water for drinking	1%	5%	12 %	1,342 families
Boil water for drinking	6%	8%	5 %	581 families

Note: Calculated as a percentage of the total number of families

3.3.12 Percentage Families filtering Water or regularly boiling Water, by Commune, in 2008

This graph shows the different ways families make drinking water safe.



Note: Calculated on as a percentage of the total number of families in each commune.

3.3.13 Families' access to Water, over 3 years

Families access to water	2006 %	2007 %	2008	
			%	Number
Families with water at home or in less then 150m	52%	64%	70 %	7,786 families
Families with water 150m or more away from home	36%	27%	22 %	2,402 families

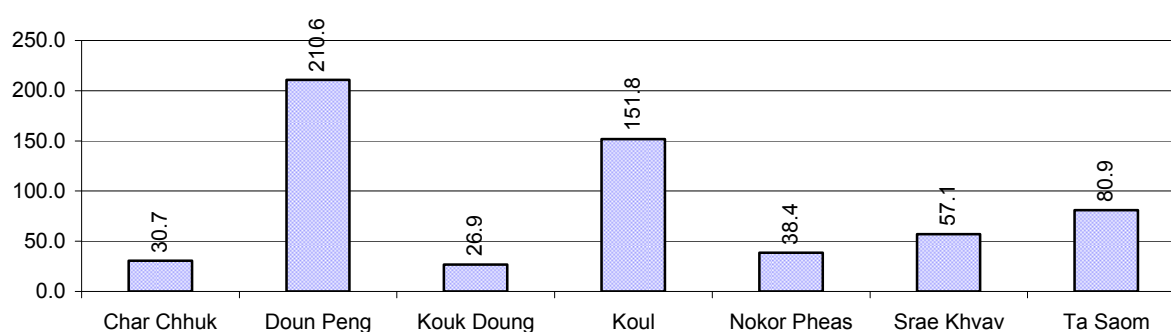
Note: Calculated as a percentage of the total number of families

3.3.14 Ratio of people to Latrines over 3 years

Description	2006 Ratio	2007 Ratio	2008	
			Ratio	Number
Ratio of people to latrines	248.1	161.7	44.0	1,329.0

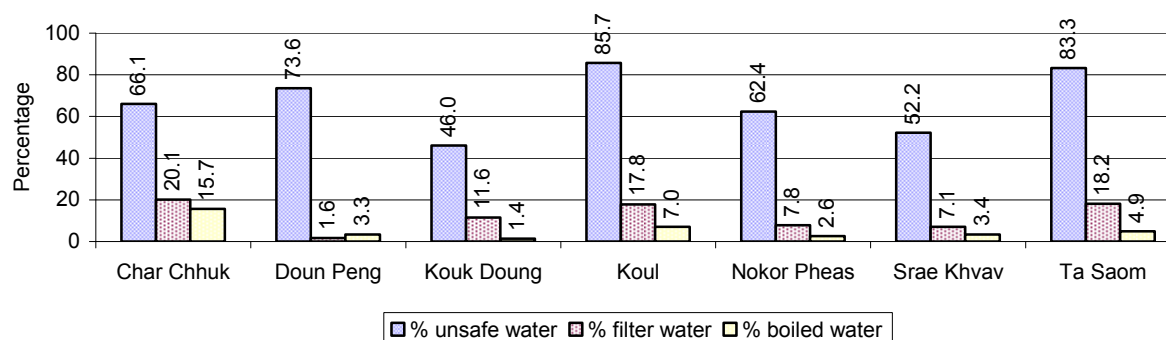
Note: Ratio calculated by dividing the number of houses with latrines by the total population

3.3.15 Ratio of People to Latrines, by Commune, in 2008



Note: Ratio calculated by dividing the number of houses with latrines by the total population in a Commune.

3.3.16 Percentage of Families drinking boiled, filtered or unsafe Water, by Commune, in 2008



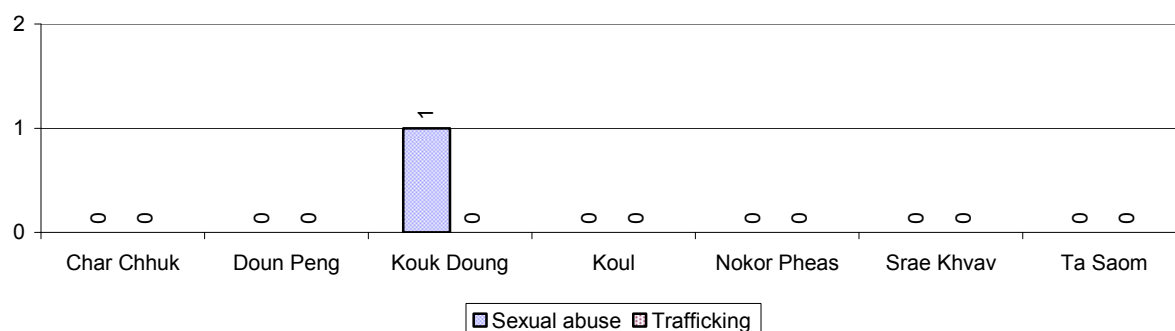
Note: Calculated as a percentage of the total number of families in each commune.

3.4 Vulnerable groups

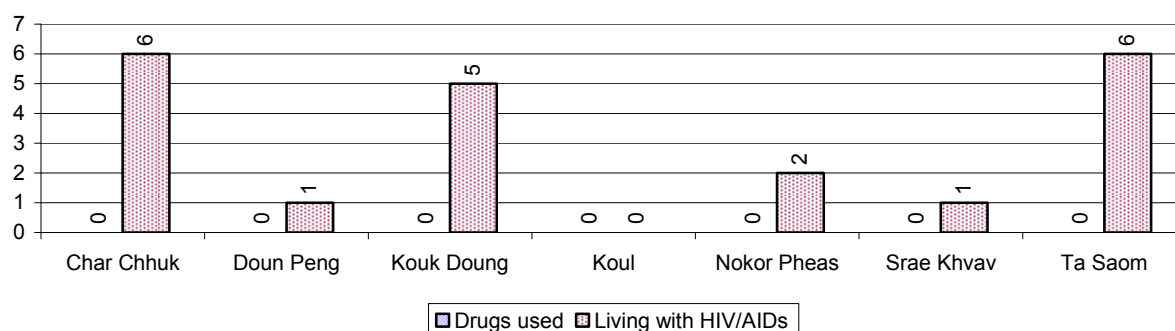
3.4.1 Vulnerable Groups in need of special Protection over 3 years

Vulnerable groups	2006	2007	2008
Victims of sexual abuse	1 person(s)	2 person(s)	1 person(s)
Victims of human trafficking	6 person(s)	0 person(s)	0 person(s)
Families with family member(s) using drugs	5 families	1 families	0 families
Families with family member(s) living with HIV/AIDS	13 families	16 families	21 families
Children under 18 yrs old whose parent died of AIDS	38 person(s)	20 person(s)	28 person(s)
Orphaned/abandoned children under 18 yrs old (all cases)	211 person(s)	255 person(s)	181 person(s)
Elderly persons without guardian	65 person(s)	91 person(s)	81 person(s)
Disabled people able to earn an income	56 person(s)	42 person(s)	30 person(s)
Disabled people unable to earn an income	44 person(s)	63 person(s)	39 person(s)
Disabled people under 18 yrs old	22 person(s)	34 person(s)	18 person(s)
Victims of natural disasters	123 families	53 families	4 families
Victims of land mines and unexploded weapons	7 person(s)	3 person(s)	0 person(s)

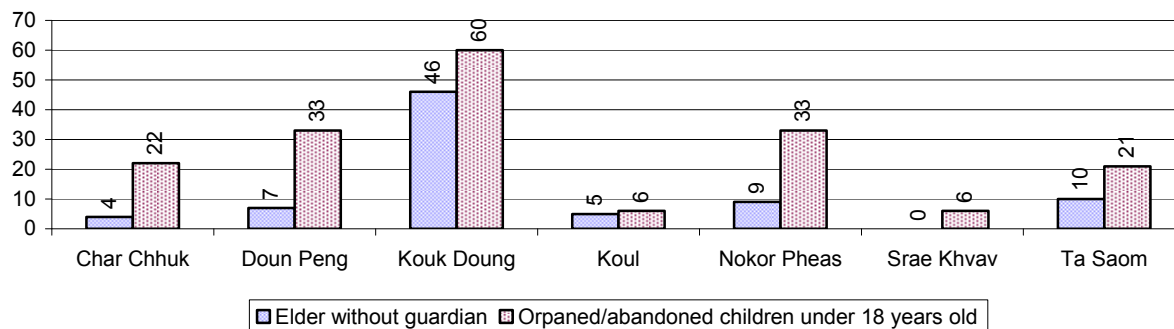
3.4.2 Registered Victims of sexual Abuse or Trafficking, by Commune, for 2008



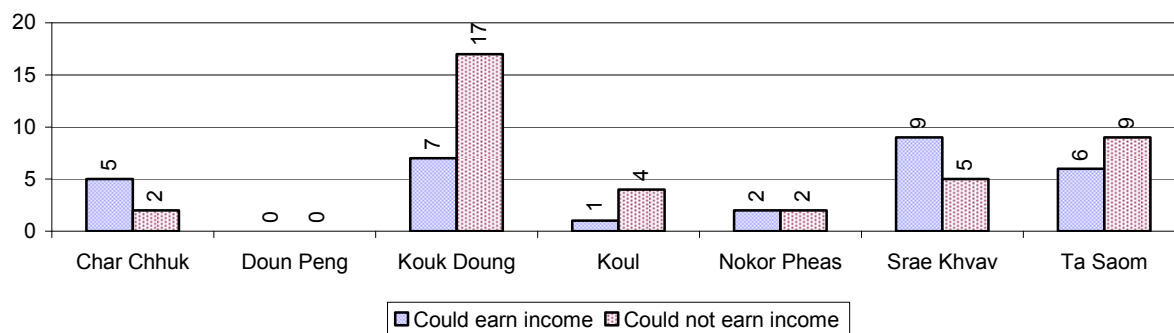
3.4.3 Registered Families with Member(s) using Drugs or living with HIV/AIDS, by Commune, for 2008



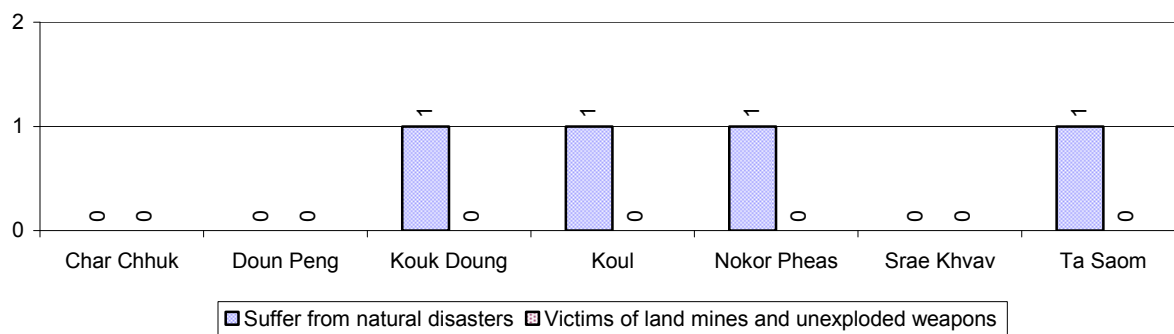
3.4.4 Elderly Persons without a Guardian and orphaned/abandoned Children under 18 years old, by Commune, for 2008



3.4.5 Number of disabled People who could or could not earn an Income, by Commune, for 2008



3.4.6 Number of Families who suffered from natural Disasters, and number of Victims of Land Mines and unexploded Weapons, by Commune, in 2008



3.5 Migration

3.5.1 Migration over 3 years

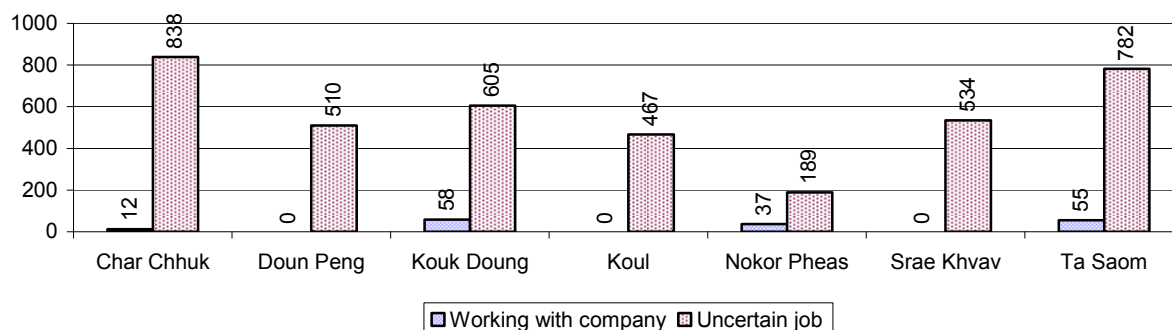
Description	2006	2007	2008
Number of families permanently in-migrated	families	42 families	65 families
Total number of people	188 person(s)	196 person(s)	266 person(s)
Total number of female	105 person(s)	92 person(s)	129 person(s)
Number of families permanently out-migrated	71 families	63 families	88 families
Total number of people	292 person(s)	252 person(s)	375 person(s)
Total number of female	159 person(s)	128 person(s)	202 person(s)
Number of families staying temporarily	23 families	40 families	37 families
Total number of people	82 person(s)	102 person(s)	112 person(s)
Total number of female	39 person(s)	48 person(s)	62 person(s)

3.5.2 Job Migration

Description	2006	2007	2008
Number of people migrated to work with company/factory	0%	0%	1% 162 persons
Number of people migrated to work, but have uncertain jobs	12%	10%	13% 3,925 persons

Note: Calculated as a percentage of the total population of 18-60 year olds

3.5.3 Number of People working outside their home Villages in a Company/Factory or with an uncertain Job in 2008

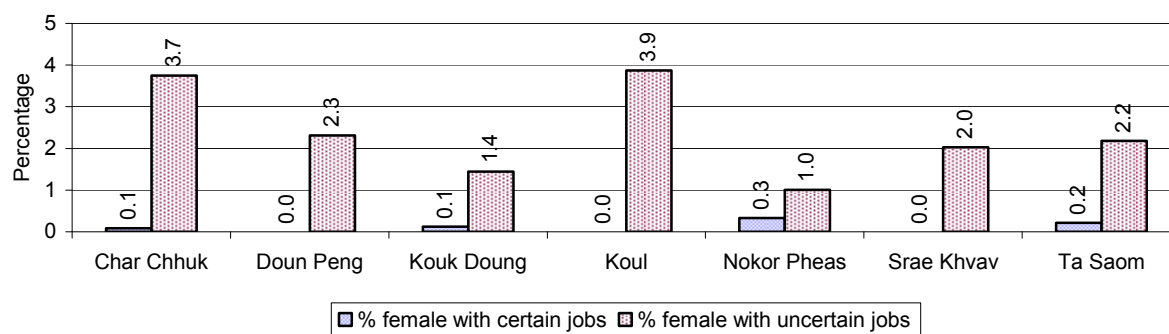


3.5.4 Female migration over 3 years

Description	2006 %	2007 %	2008	
			%	Number
Total number of migrants	6.3%	5.3%	7.0%	4,087 person(s)
Number of female migrants	2.0%	1.7%	2.3%	1,352 person(s)
Total number of migrants, who go to work with company/factory (with certain jobs)	0.1%	0.2%	0.3%	162 person(s)
Number of female migrants with certain jobs	0.1%	0.1%	0.1%	73 person(s)
Total number of migrants with uncertain jobs	6.2%	5.1%	6.7%	3,925 person(s)
Number of female migrants with uncertain jobs	1.9%	1.6%	2.2%	1,279 person(s)

Note: Calculated as a percentage of the total population

3.5.5 Percentage female Migrants with certain and uncertain Jobs, by Commune, in 2008



Note: Calculated as a percentage of the total population of the commune

4 Natural Resources and Environment (NRE)

4.1 Families involved with NRE issues over 3 years

Description	2006 %	2007 %	2008	
			%	Number
Families living with forest by products	0 %	0 %	0 %	0 families
Families living in a protected area	0 %	0 %	0 %	0 families
Houses with access to garbage collection service	0 %	0 %	0 %	0 families
Families affected by environmental pollution	0 %	0 %	0 %	0 families
Families using chemical fertilizer	59 %	66 %	66 %	7,253 families
Families using chemical pesticide	22 %	17 %	27 %	3,005 families

Note: Calculated as a percentage of the total number of families

4.2 Percentage of Families involved with Natural Resource issues, by Commune, for 2008

There were no families involved with natural resource issues in this District in 2008

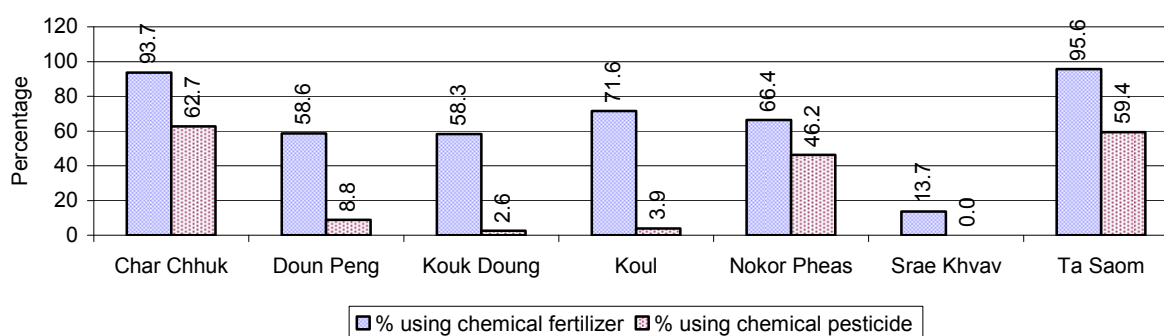
Note: Calculated as a percentage of the number of families in each commune

4.3 Percentage Houses with access to Garbage collection and Families affected by environmental Pollution, by Commune, for 2008

There were no houses with access to garbage collection and there were no families affected by environmental pollution in this District in 2008

Note: Garbage collection is calculated as a percentage of the total number of houses in each commune and families affected by environmental pollution is calculated as a percentage of the total number of families in each commune.

4.4 Percentage Families using chemical Fertilizer and chemical Pesticides, by Commune, for 2008



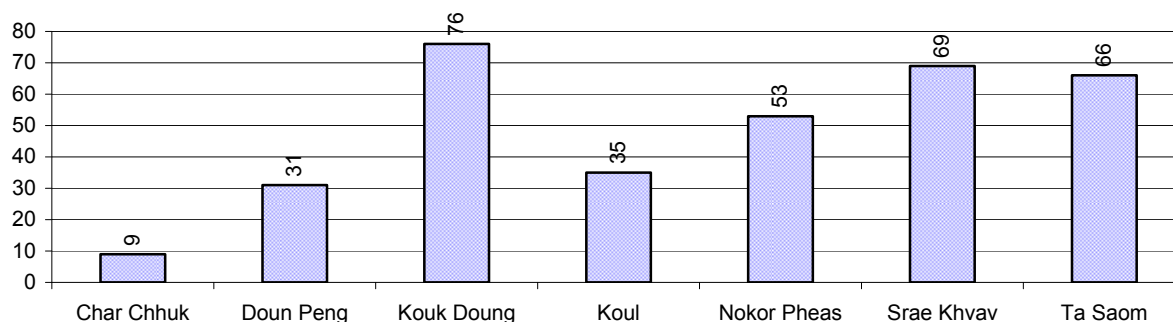
Note: Calculated as a percentage of the total number of families in each commune

5 Administration and Security

5.1 Birth Registration across 3 years

Description	2006	2007	2008
Number of infants to be registered	935 person(s)	974 person(s)	1,199 person(s)
Number of unregistered infants the year	325 person(s)	329 person(s)	339 person(s)
Percentage of infants unregistered	35 %	34 %	28 %

5.2 Number of unregistered Infants born in 2008, by Commune

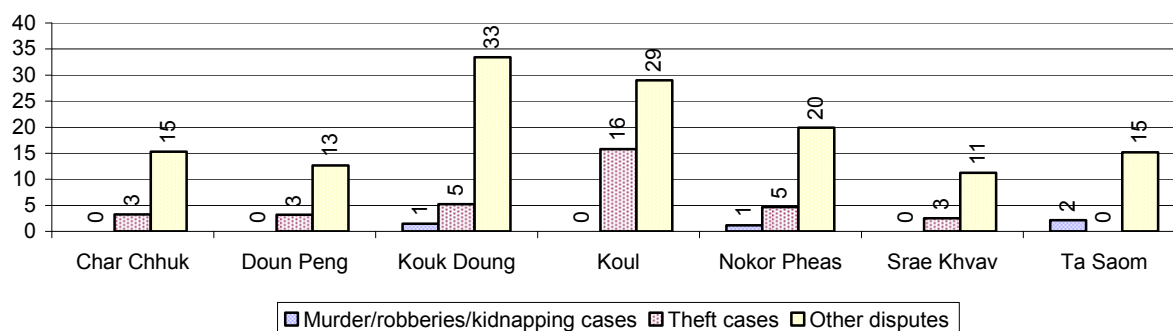


5.3 Registered criminal Cases over 3 years

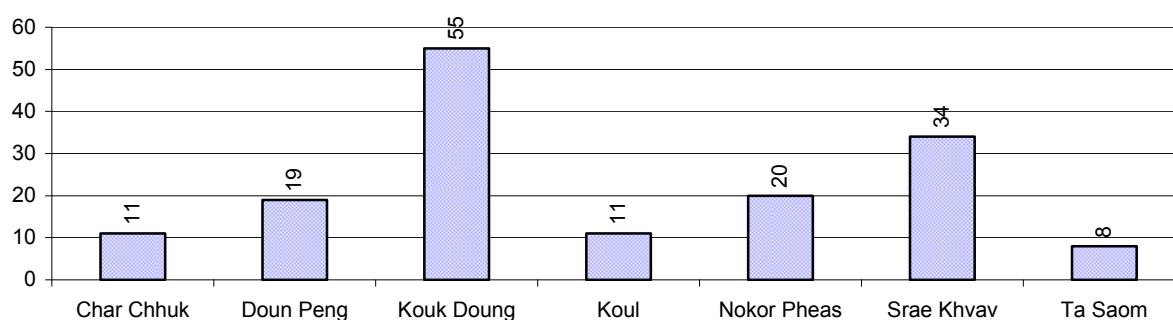
Description	2006	2007	2008
Murders, robberies and kidnapping cases	0 case(s)	14 case(s)	5 case(s)
Theft cases	14 case(s)	32 case(s)	24 case(s)
land dispute cases	175 case(s)	160 case(s)	158 case(s)
Other disputes cases	101 case(s)	90 case(s)	118 case(s)

Note: this reflects only registered criminal cases

5.4 Registered criminal Cases per 10,000 people, by Commune, for 2008



5.5 Number of registered Land Disputes, by Commune, in 2008

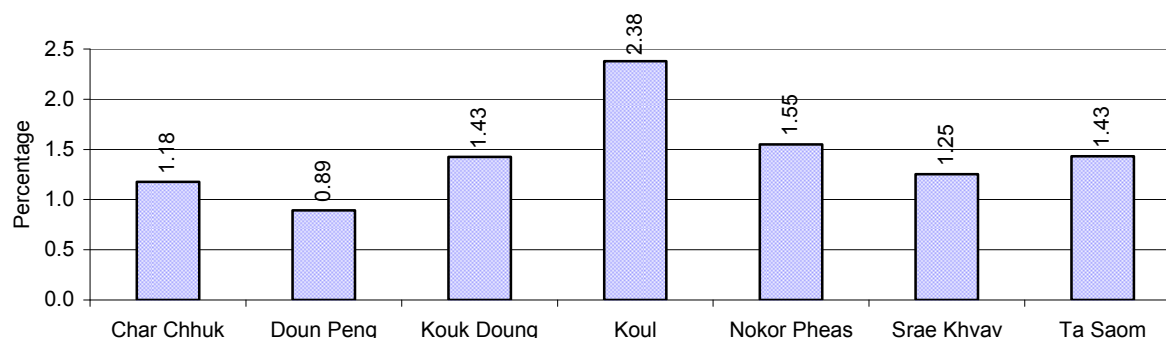


6 Gender

6.1 Registered Domestic Violence over 3 years

Description		2006	2007	2008
Families experiencing domestic violence		185 families	156 families	153 families(s)
% families experiencing domestic violence		2 %	1 %	1 %
Domestic violence cases reported by village chiefs		86 case(s)	60 case(s)	48 case(s)
Type	Physical violence	38 case(s)	28 case(s)	27 case(s)
	Sexual violence	7 case(s)	5 case(s)	2 case(s)
	Mental violence	25 case(s)	14 case(s)	7 case(s)
	Household economic violence	16 case(s)	13 case(s)	12 case(s)
Number of administrative decisions on domestic violence		0 case(s)	43 case(s)	14 case(s)
% of administrative decisions on domestic violence		0 %	72 %	29 %

6.2 Percentage of registered cases of Families experiencing domestic Violence, by Commune, in 2008



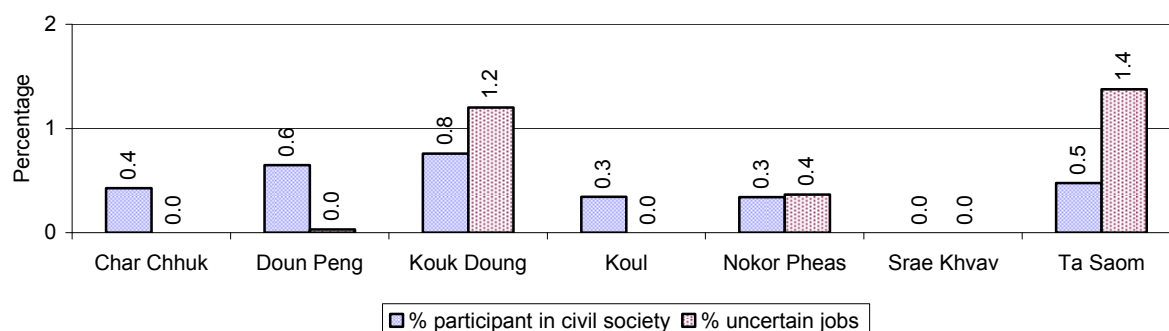
Note: Calculated as a percentage of the total number of families in each commune

6.3 Women's involvement over 3 years

Description	2006 %	2007 %	2008	
			%	Number
People participating in civil society	1%	0%	1%	357 person(s)
Women participating in civil society	1%	0%	0%	268 person(s)
People, 18-60 yrs, with uncertain/irregular jobs	0%	3%	1%	294 person(s)
Women, 18-60 yrs, with uncertain/irregular jobs	0%	1%	1%	158 person(s)

Note: Participation can be in NGOs, CBOs, credit groups, women's unions, parties and other civil society organizations. The first section is calculated as a percentage of the total population. The second section is calculated as a percentage of the total 18-60 year old population.

6.4 Percentage of Female Participants in Civil Society and of 18-60 year women with uncertain Jobs, by Commune, in 2008



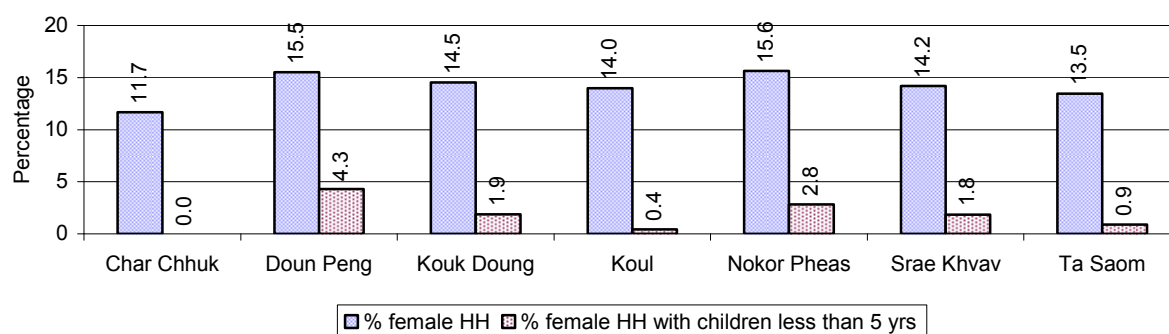
Note: Percentage of female participants in civil society is calculated as a percentage of the total population per commune. The percentage of 18-60 years old women with uncertain jobs is calculated as a percentage of the total 18-60 year old population per commune.

6.5 Female-headed Households over 3 years

Families with:	2006	2007	2008	
	%	%	%	Number
Households in which a woman is the family head	15%	14%	14%	1,559 families
Households in which a woman is the family head with children of less than 5 yrs	3%	2%	2%	191 families

Note: Calculated as a percentage of the total number of families

6.6 Percentage female-headed Households and with Children of less than 5 years old, by Commune, in 2008



Note: Calculated as a percentage of the total number of families in each commune
HH: Headed Household

7 Indigenous People in the District

7.1 Ethnic Minorities in the District over 3 years

Race of indigenous	2006		2007		2008	
	# families	# population	# families	# population	# families	# population
Phnong	0 families	0 person(s)	0 families	0 person(s)	0 families	0 person(s)
Kouy	0 families	0 person(s)	0 families	0 person(s)	0 families	0 person(s)
Stieng	0 families	0 person(s)	0 families	0 person(s)	0 families	0 person(s)
Mil	0 families	0 person(s)	0 families	0 person(s)	0 families	0 person(s)
Kroal	0 families	0 person(s)	0 families	0 person(s)	0 families	0 person(s)
Thmorn	0 families	0 person(s)	0 families	0 person(s)	0 families	0 person(s)
Khaonh	0 families	0 person(s)	0 families	0 person(s)	0 families	0 person(s)
Tompouonn	0 families	0 person(s)	0 families	0 person(s)	0 families	0 person(s)
Charay	0 families	0 person(s)	0 families	0 person(s)	0 families	0 person(s)
Kroeung	0 families	0 person(s)	0 families	0 person(s)	0 families	0 person(s)
Kavet	0 families	0 person(s)	0 families	0 person(s)	0 families	0 person(s)
Saouch	0 families	0 person(s)	0 families	0 person(s)	0 families	0 person(s)
Lun	0 families	0 person(s)	0 families	0 person(s)	0 families	0 person(s)
Kachak	0 families	0 person(s)	0 families	0 person(s)	0 families	0 person(s)
Praov	0 families	0 person(s)	0 families	0 person(s)	0 families	0 person(s)
Others	0 families	0 person(s)	0 families	0 person(s)	0 families	0 person(s)
Total	0 families	0 person(s)	0 families	0 person(s)	0 families	0 person(s)

Note: "Others" refer to other ethnic groups which are not listed.

7.2 Other Minorities in the District over 3 years

Minority	2006		2007		2008	
	# families	# population	# families	# population	# families	# population
Khmer Islamic	0 families	0 person(s)	1 families	5 person(s)	2 families	11 person(s)
Vietnamese	0 families	0 person(s)	0 families	0 person(s)	1 families	1 person(s)
Laos	0 families	0 person(s)	1 families	1 person(s)	0 families	0 person(s)

Note: Number of indigenous and minority population are additional data, so some village may not recorded.

SECTION C: PLANS AND PROJECTS

8 Priorities and Plans

8.1 Priorities of Commune Councils for 2009 in the District by Sector

The District Priority Activity Matrix (DPAM) data are taken from the CDPD. The DPAM is used for the District Integration Workshop (DIW), to show what kind of projects the commune has proposed in their Commune Investment Plan (CIP) for 2009. Donors, departments and other agencies then consider which projects they want to support and which projects they are not interested in. This results in Temporary Agreements between the Commune Council and the Supporter (NGO, Department, private donor, etc), as shown in table 8.2

No.	Project Name	Char Chhuk	Doun Peng	Kouk Doung	Koul	Nokor Pheas	Srae Khvav	Ta Saom	Req. Project
		170101	170102	170103	170104	170105	170106	170107	Total
Economic									
1	Compost fertilizer training		4 training			10 training			2
2	Chemical and pesticide application training					10 training			1
3	Vegetable growing training					10 training			1
4	Mixed farming system training			15 training				12 training	2
5	Mushroom growing training	1 training				10 training			2
6	Animal vaccination request	400 Head	1000 Head				3 time		3
7	Village veterinary training		2 training						1
8	Animal raising training		4 training						1
9	Rice seed request		1 T	4000 Kg		1500 Kg			3
10	Calf for raising request			30 Head		10 Head			2
11	Sow for raising request					15 Head			1
12	Pesticide request					100 bottle			1
13	Vegetable seeds request					500 Kg			1
14	Chicken request					500 Head			1
15	Family fish pond construction				7 place	60 place		39 place	3
16	Fish fingerling request				350 Head	10000 Head			2
17	Earth road construction	1540 m	300 m		1500 m	3032 km			4
18	Laterite/natural gravel road construction	2700 m		4000 m	1500 m	3032 km	11450 m	5000 m	6
19	Culvert construction	6 place		10 place		5 place		3 place	4
20	Bridger construction			2 place					1
21	Earth road repairing	1200 m		5100 m			1500 m	2800 m	4
22	Laterite/natural gravel road repairing		1500 m						1
23	Culvert repairing	10 place							1
24	Canal construction			6500 m		10850 m			2

District Data Book 2009: Development Plans and Projects

No.	Project Name	Char Chhuk	Doun Peng	Kouk Doung	Koul	Nokor Pheas	Srae Khvav	Ta Saom	Req. Project
		170101	170102	170103	170104	170105	170106	170107	Total
25	Dam construction		500 m	2500 m					2
26	Water gate construction						1 place		1
27	Spillway construction						1 place		1
28	Water gate plug construction	4 place				15 place			2
29	Canal repairing				2000 m	10850 m	2860 m		3
30	Dam repairing	400 m			700 m		80 m	185 m	4
31	Cash credit			7 Team		100 Team		13 Team	3
32	Mat-forming handicraft					10 training			1
Social									
1	Family planning		2 time	30 training			4 time	13 time	4
2	Antenatal care		2 time			10 time			2
3	Reproductive health awareness education	4 time	12 time		7 time	10 training	12 time	13 time	6
4	Women and child health care program					15 time			1
5	Condom education					10 time			1
6	HIV/AIDS awareness education		2 training				22 time		2
7	Health/hygiene education for local people		4 training	15 training					2
8	Children immunization provision	12 Time							1
9	Children and women vaccination				12 time		12 time		2
10	TBA training		2 training						1
11	Health center drug supply						2 time		1
12	Health staffs need at health center						4 person		1
13	Latrine construction	351 toilet	70 toilet	1500 toilet	140 toilet			320 toilet	5
14	Hospital construction	2 building							1
15	Water filter equipment supply			2500 Container	140 Container			500 Container	3
16	Giant water jar provision			25 Jar					1
17	Pump wells construction	6 place	10 place	75 place	7 place		22 place	13 place	6
18	Ring wells construction	20 place	10 place	75 place				20 place	4
19	Ponds construction		1 place			1 place			2
20	Ring wells repairing							10 place	1
21	Ponds repairing		2 place						1
22	Literacy class			15 class		10 class			2
23	School building			6 building			1 building	3 building	3
24	Primary school creation/construction					1 place			1

District Data Book 2009: Development Plans and Projects

No.	Project Name	Char Chhuk	Doun Peng	Kouk Doung	Koul	Nokor Pheas	Srae Khvav	Ta Saom	Req. Project
		170101	170102	170103	170104	170105	170106	170107	Total
25	Kindergarten school construction/repair	5 room			2 class			8 class	3
26	Pre-school teacher/kid keeper support	3 person				10 person			2
27	Teacher/volunteer teacher need			18 person	2 person				2
28	Food/meal provision to school children	3 time							1
29	Scholarship provision to poor pupils	3 person		15 place	20 person	50 person		60 person	5
30	Vocational training	1 training				10 time			2
31	Computer skill training	1 class							1
32	English language class	5 class							1
33	Gifts building construction					9 place			1
NREM									
1	Environmental awareness and law education	1 training							1
2	Forestry law education			15 training		10 time	1 time		3
3	Firewood saving cooking stove					1436 set			1
4	NREM strengthening				2 training		1 time	2 time	3
5	Tree plantation project	700 Tree	1500 Tree	3500 Tree		15000 Tree	1500 Tree	2000 Tree	6
6	Community forestry activities support					20 Team	1 place		2
7	Forest protection strengthening		1 training			10 time			2
Administration and Security									
1	Civil registration encouragement		2 time		2 time	250 person		2 time	4
2	Commune office construction/renovation	1 building					1 place		2
3	Village office construction/renovation		4 place						1
4	Land law dissemination	1 time					11 time		2
5	Provision of land titles/certificates	1120 doc		2562 family	200 doc		200 doc	200 doc	5
6	Land registration dissemination/enforcement			15 training					1
7	Village/commune border identification			19 place			1 time		2
8	Law/regulation dissemination			15 training					1
9	Penal and civil law dissemination				2 time		11 time		2
10	Traffic law and public order dissemination	2 training							1
11	Livelihood community improvement establishment/support					2 training			1
12	Water pump group establishment			30 set					1

District Data Book 2009: Development Plans and Projects

No.	Project Name	Char Chhuk 170101	Doun Peng 170102	Kouk Doung 170103	Koul 170104	Nokor Pheas 170105	Srae Khvav 170106	Ta Saom 170107	Req. Project Total
Gender									
1	Gender mainstreaming concept training	2 training	12 training						2
2	Gender mainstreaming among local people			15 training					1
3	Woman and children's rights dissemination		2 training	15 training					2
4	Women and men roles/rights dissemination		2 training		12 time			12 time	3
5	Weaving skill training/weaving craft creation						2 training		1
6	Food cooking/processing skill training				2 training			2 training	2
7	Law against domestic violence dissemination	2 training	4 training	15 training	12 time	5 training	12 time	12 time	7
8	Law against trafficking dissemination		2 training				12 time		2
9	Sexual violence/harassment protection law dissemination						12 time		1

Source: CDPD – District Priority Matrix

8.2 Temporary Agreements by Commune, for 2009²

At the District Integration Workshop (DIW) the Supporters (donors, agencies, private donors, NGOs, etc.) identify which projects/activities they would like to support or they put forward their own projects to be implemented in a particular commune. Once there is agreement between Commune Councils and Supporters on specific projects a **Temporary Agreement** is signed by the commune and the Supporter to show their mutual commitment to the identified projects/activities.

It is important to keep in mind that such Temporary Agreements do not necessarily result in implementation.

8.2.1 Temporary Agreements for 2009 as per DIW 2008 for Commune: Char Chhuk

Commune GIS	Commune	Temporary Agreements				Supporter	Funding Source	Listed in CIP befor DIW
		Project Name	Quantity	Unit	Est.Cost (K.Riels)			
Economic								
170101	Char Chhuk	Earth road construction	2800	m	146916	World Food Programme		✓
170101	Char Chhuk	Laterite road construction	11	km	880000	Department of Rural Development		✓
170101	Char Chhuk	Earth road repair	1200	m	47520	World Food Programme		✓
Social								
170101	Char Chhuk	Water supply and latrine construction support	20	village	1500000	World Food Programme		□
170101	Char Chhuk	Literacy class operation	3	class	10500	Department of Education Youth and Sports		□
170101	Char Chhuk	Children immunization provision	12	Time	6000			✓
NREM								
170101	Char Chhuk	Forestry law dissemination	1	time	100	Forest administration		□
170101	Char Chhuk	Tree plantation project	1500	Tree	12000	Forest administration		✓
Gender								
170101	Char Chhuk	Female councilors capacity strengthening forum	2	training	400	Department of Women		□

² Not all the data from the CDPD has been translated to English, this has resulted in some cells in the TA tables being blank.

8.2.2 Temporary Agreements for 2009 as per DIW 2008 for Commune: Doun Peng

Commune GIS	Commune	Temporary Agreements				Supporter	Funding Source	Listed in CIP before DIW
		Project Name	Quantity	Unit	Est.Cost (K.Riels)			
Economic								
170102	Doun Peng	Animal vaccination request	560	Head	384	Partnership for Development in Kampuchea		✓
170102	Doun Peng	Decentralization and Deconcentration	2	class	5600	Department of Education Youth and Sports	PIF	□
170102	Doun Peng	Earth road construction	300	m	11880	Department of Rural Development		✓
170102	Doun Peng	Community resource center	1	place	8000	Partnership for Development in Kampuchea		□
170102	Doun Peng	Fish raising training	8	training	3200	Partnership for Development in Kampuchea		□
170102	Doun Peng	Pipe culverts construction	7	place	11480	Partnership for Development in Kampuchea		□
170102	Doun Peng	Training and vegetable seed provision	8	training	3200	Partnership for Development in Kampuchea		□
170102	Doun Peng	Animal raising training	8	training	3200	Partnership for Development in Kampuchea		✓
170102	Doun Peng	Dam construction	1	place	4800	Partnership for Development in Kampuchea		✓
Social								
170102	Doun Peng	Health/hygiene education for local people	16	time	48000	Department of Rural Development		✓
170102	Doun Peng	HIV/AIDS awareness education	4	training	8000			✓
170102	Doun Peng	Latrine construction	5	toilet	2700	Department of Rural Development		✓
170102	Doun Peng	Latrine construction	8	village	150000	World Food Programme		✓
170102	Doun Peng	Pump wells construction	11	place	61600	Plan International		✓
170102	Doun Peng	Ring wells construction	7	place	8960	Partnership for Development in Kampuchea		✓
170102	Doun	Kindergarten latrine construction	2	place	4000	Plan International		□

District Data Book 2009: Development Plans and Projects

Commune GIS	Commune	Temporary Agreements				Supporter	Funding Source	Listed in CIP before DIW
		Project Name	Quantity	Unit	Est.Cost (K.Riels)			
	Peng							
170102	Doun Peng	Literacy class operation	4	class	2400	Partnership for Development in Kampuchea		<input type="checkbox"/>
170102	Doun Peng	Wells construction for kindergarten school	2	place	10400	Plan International		<input type="checkbox"/>
NREM								
170102	Doun Peng	Forest protection strengthening	1	training	800	Forest administration		✓
170102	Doun Peng	Tree plantation project	1500	Tree	3000	Forest administration		✓
Administration and Security								
170102	Doun Peng	Commune land use planning projects	46	time	800	Department of Land Management, Urban Planning & Construction		<input type="checkbox"/>
Gender								
170102	Doun Peng	Female councilors capacity strengthening forum	2	training	200	Department of Women		<input type="checkbox"/>
170102	Doun Peng	Woman and children's rights dissemination	2	training	200	Department of Women		✓
170102	Doun Peng	Gender mainstreaming concept training	8	training	3200	Partnership for Development in Kampuchea		✓

8.2.3 Temporary Agreements for 2009 as per DIW 2008 for Commune: Kouk Doung

Commune GIS	Commune	Temporary Agreements				Supporter	Funding Source	Listed in CIP befor DIW
		Project Name	Quantity	Unit	Est.Cost (K.Riels)			
Economic								
170103	Kouk DOUNG	New earth road construction	5500	m	288584	World Food Programme		<input type="checkbox"/>
170103	Kouk DOUNG	Group formation and funding support	15	Team	7400	Khmer Women Organization		<input type="checkbox"/>
170103	Kouk	Disaster risk reduction	7	time	3330	Khmer Women Organization		<input type="checkbox"/>

District Data Book 2009: Development Plans and Projects

Commune GIS	Commune	Temporary Agreements				Supporter	Funding Source	Listed in CIP before DIW
		Project Name	Quantity	Unit	Est.Cost (K.Riels)			
	Doung							
170103	Kouk Doung	Mixed farming system training	7	training	2525	Khmer Women Organization		✓
170103	Kouk Doung	Earth road repair	2000	m	73620	Department of Rural Development		✓
170103	Kouk Doung	Culvert construct	1	place	1370	Department of Rural Development		✓
Social								
170103	Kouk Doung	HIV/AIDS right and gender awareness mainstreaming	7	training	700	Khmer Women Organization		□
170103	Kouk Doung	Health/hygiene education for local people	7	time	375	Khmer Women Organization		✓
170103	Kouk Doung	Latrine construction	15	village	1500000	World Food Programme		✓
170103	Kouk Doung	Literacy class	5	class	17500	Department of Education Youth and Sports		✓
NREM								
170103	Kouk Doung	Forestry law education	2	training	6500	Forest administration		✓
170103	Kouk Doung	Tree plantation project	1500	Tree	4400	Forest administration		✓
Administration and Security								
170103	Kouk Doung	CBO team leader and community member strengthening	7	training	1570	Khmer Women Organization		□
Gender								
170103	Kouk Doung	Female councilors capacity strengthening forum	2	training	200	Department of Women		□

8.2.4 Temporary Agreements for 2009 as per DIW 2008 for Commune: Koul

Commune GIS	Commune	Temporary Agreements				Supporter	Funding Source	Listed in CIP befor DIW
		Project Name	Quantity	Unit	Est.Cost (K.Riels)			
Economic								
170104	Koul	Fish raising training	7	training	2800	Partnership for Development in Kampuchea		<input type="checkbox"/>
170104	Koul	Laterite road construction	4	km	32000	Department of Rural Development		✓
170104	Koul	Vegetable seed supply and training	7	training	2800	Partnership for Development in Kampuchea		<input type="checkbox"/>
170104	Koul	Livestock raising technique training	7	training	2800	Partnership for Development in Kampuchea		<input type="checkbox"/>
170104	Koul	Pipe culverts construction	3	place	4920	Partnership for Development in Kampuchea		<input type="checkbox"/>
170104	Koul	Community resource center	1	place	8000	Partnership for Development in Kampuchea		<input type="checkbox"/>
170104	Koul	Irrigation system construction	1	place	84000	Department of Water Resources and Meteorology	PIF	<input type="checkbox"/>
170104	Koul	Earth road repair	2500	m	99004	World Food Programme		<input type="checkbox"/>
170104	Koul	Cow-buffalo vaccinating	560	Head	336	Partnership for Development in Kampuchea		<input type="checkbox"/>
Social								
170104	Koul	Gender committee and farmer training	7	training	2800	Partnership for Development in Kampuchea		<input type="checkbox"/>
170104	Koul	Water supply and latrine construction support	7	village	150000	Asian Development Bank		<input type="checkbox"/>
170104	Koul	Hygiene and health care awareness education	8	training	24000	Plan International		<input type="checkbox"/>
170104	Koul	Ring wells construction	3	place	3840	Partnership for Development in Kampuchea		<input type="checkbox"/>
170104	Koul	Wells construction for kindergarten school	1	place	5600	Plan International		<input type="checkbox"/>
170104	Koul	Pump wells construction	5	well	28000	Plan International		✓
170104	Koul	Pump wells construction	2	place	9600	Partnership for Development in Kampuchea		✓

Commune GIS	Commune	Temporary Agreements				Supporter	Funding Source	Listed in CIP before DIW
		Project Name	Quantity	Unit	Est.Cost (K.Riels)			
170104	Koul	Latrine construction	5	toilet	2700	Department of Rural Development		✓
170104	Koul	Children and women vaccination	12	time	6000			✓
NREM								
170104	Koul	Forestry law dissemination	2	training	80000	Forest administration		□
Gender								
170104	Koul	Female councilors capacity strengthening forum	2	training	200	Department of Women		□

8.2.5 Temporary Agreements for 2009 as per DIW 2008 for Commune: Nokor Pheas

Commune GIS	Commune	Temporary Agreements				Supporter	Funding Source	Listed in CIP before DIW
		Project Name	Quantity	Unit	Est.Cost (K.Riels)			
Economic								
170105	Nokor Pheas	Commune development forum	2	time	400	VIR		☐
170105	Nokor Pheas	Culvert construct	9	place	14784	Partnership for Development in Kampuchea		✓
170105	Nokor Pheas	Water gate construction	1	place	400	Partnership for Development in Kampuchea		✓
170105	Nokor Pheas	Irrigation canal rehabilitation	1	village	200000	VIR		✓
170105	Nokor Pheas	Vegetable growing training	8	training	3200	Partnership for Development in Kampuchea		✓
170105	Nokor Pheas	Mat-forming handicraft	5	village	26000	VIR		✓
170105	Nokor Pheas	Earth road repair	1200	m	47880	World Food Programme		☐
170105	Nokor Pheas	Earth road construction	1015	m	53252	World Food Programme		✓
170105	Nokor Pheas	Integrated agriculture training	5	village	1200	VIR		☐

District Data Book 2009: Development Plans and Projects

Commune GIS	Commune	Temporary Agreements				Supporter	Funding Source	Listed in CIP before DIW
		Project Name	Quantity	Unit	Est.Cost (K.Riels)			
170105	Nokor Pheas	Perfume rice crop demonstration	25	person	1068	Department of Agriculture Forestry and Fisheries		<input type="checkbox"/>
170105	Nokor Pheas	Livestock raising technique training	8	training	3200	Partnership for Development in Kampuchea		<input type="checkbox"/>
170105	Nokor Pheas	Market networking	5	village	8400	VIR		<input type="checkbox"/>
170105	Nokor Pheas	Fish raising training	8	training	3200	Partnership for Development in Kampuchea		<input type="checkbox"/>
170105	Nokor Pheas	Cow-buffalo vaccinating	2350	Head	384	Partnership for Development in Kampuchea		<input type="checkbox"/>
170105	Nokor Pheas	Disaster prevention	1	training	2200	VIR		<input type="checkbox"/>
Social								
170105	Nokor Pheas	Literacy class	4	class	2400	Partnership for Development in Kampuchea		✓
170105	Nokor Pheas	Ring wells construction	6	place	9840	Partnership for Development in Kampuchea		<input type="checkbox"/>
170105	Nokor Pheas	Reproductive health awareness education	10	training	1000			✓
170105	Nokor Pheas	Vagabond people support	5	village	320	VIR		<input type="checkbox"/>
170105	Nokor Pheas	Literacy class	3	class	10500	Department of Education Youth and Sports		✓
170105	Nokor Pheas	Water supply and latrine construction support	10	village	1500000	Asian Development Bank		<input type="checkbox"/>
170105	Nokor Pheas	Potable wells construction	5	village	8400	VIR		<input type="checkbox"/>
170105	Nokor Pheas	HIV/AIDS, gender and basic right awareness dissemination	5	village	400	VIR		<input type="checkbox"/>
Administration and Security								
170105	Nokor Pheas	Commune land use planning projects	46	time	800	Department of Land Management, Urban Planning & Construction		<input type="checkbox"/>
170105	Nokor	CCs capacity strengthening	5	village	1200	VIR		<input type="checkbox"/>

Commune GIS	Commune	Temporary Agreements				Supporter	Funding Source	Listed in CIP before DIW
		Project Name	Quantity	Unit	Est.Cost (K.Riels)			
	Pheas							
Gender								
170105	Nokor Pheas	Gender training for gender committee and farmer	8	training	3200	Partnership for Development in Kampuchea		<input type="checkbox"/>
170105	Nokor Pheas	Female councilors capacity strengthening forum	2	training	200	Department of Women		<input type="checkbox"/>

8.2.6 Temporary Agreements for 2009 as per DIW 2008 for Commune: Srae Khvav

Commune GIS	Commune	Temporary Agreements				Supporter	Funding Source	Listed in CIP befor DIW
		Project Name	Quantity	Unit	Est.Cost (K.Riels)			
Economic								
170106	Srae Khvav	Commune development forum	1	time	400	VIR		<input type="checkbox"/>
170106	Srae Khvav	Irrigation canal rehabilitation	2000	m	120000	VIR		✓
170106	Srae Khvav	Animal vaccination request	700	Head	384	Partnership for Development in Kampuchea		✓
170106	Srae Khvav	Dam repairing	80	m	12000	VIR		✓
170106	Srae Khvav	Pig raising training	11	training	4400	Partnership for Development in Kampuchea		<input type="checkbox"/>
170106	Srae Khvav	Fish raising training	11	training	4400	Partnership for Development in Kampuchea		<input type="checkbox"/>
170106	Srae Khvav	Vegetable growing training and seed provision	11	training	4400	Partnership for Development in Kampuchea		<input type="checkbox"/>
170106	Srae Khvav	Culvert construction	4	place	6560	Partnership for Development in Kampuchea		<input type="checkbox"/>
170106	Srae Khvav	Community resource center	1	place	8000	Partnership for Development in Kampuchea		<input type="checkbox"/>
170106	Srae Khvav	Laterite road construction	12	km	960000	Department of Rural Development		✓

District Data Book 2009: Development Plans and Projects

Commune GIS	Commune	Temporary Agreements				Supporter	Funding Source	Listed in CIP before DIW
		Project Name	Quantity	Unit	Est.Cost (K.Riels)			
170106	Srae Khvav	Mixed farming system training	11	training	48000	VIR		<input type="checkbox"/>
Social								
170106	Srae Khvav	Family planning	4	time	2000			✓
170106	Srae Khvav	Pump wells construction	7	well	8400	VIR		✓
170106	Srae Khvav	Pump wells construction	9	place	49200	Plan International		✓
170106	Srae Khvav	Pump wells construction	2	place	9600	Partnership for Development in Kampuchea		✓
170106	Srae Khvav	HIV/AIDS awareness education	12	time	400	VIR		✓
170106	Srae Khvav	Community water pond	1	place	10000	Partnership for Development in Kampuchea		<input type="checkbox"/>
170106	Srae Khvav	Household latrine construction	4	place	2160	Department of Rural Development		<input type="checkbox"/>
170106	Srae Khvav	Literacy class operation	3	class	4800	VIR		<input type="checkbox"/>
170106	Srae Khvav	Vagabond people support	1	time	320	VIR		<input type="checkbox"/>
170106	Srae Khvav	Hygiene and health care awareness education	8	training	2400	Department of Rural Development		<input type="checkbox"/>
170106	Srae Khvav	Wells construction for kindergarten school	2	well	10400	Plan International		<input type="checkbox"/>
170106	Srae Khvav	Kindergarten latrine construction	2	toilet	4000	Plan International		<input type="checkbox"/>
170106	Srae Khvav	Ring wells construction	5	place	6400	Partnership for Development in Kampuchea		<input type="checkbox"/>
NREM								
170106	Srae Khvav	Tree plantation project	1500	Tree	15000	Forest administration		✓
Administration and Security								
170106	Srae	CCs capacity strengthening	2	time	1200	VIR		<input type="checkbox"/>

District Data Book 2009: Development Plans and Projects

Commune GIS	Commune	Temporary Agreements				Supporter	Funding Source	Listed in CIP before DIW
		Project Name	Quantity	Unit	Est.Cost (K.Riels)			
	Khvav							
170106	Srae Khvav	Commune land use planning projects	46	time	800	Department of Land Management, Urban Planning & Construction		<input type="checkbox"/>
Gender								
170106	Srae Khvav	Gender committee and farmer training	11	training	4400	Partnership for Development in Kampuchea		<input type="checkbox"/>
170106	Srae Khvav	Female councilors capacity strengthening forum	2	training	200	Department of Women		<input type="checkbox"/>

8.2.7 Temporary Agreements for 2009 as per DIW 2008 for Commune: Ta Saom

Commune GIS	Commune	Temporary Agreements				Supporter	Funding Source	Listed in CIP befor DIW
		Project Name	Quantity	Unit	Est.Cost (K.Riels)			
Economic								
170107	Ta Saom	Cow-buffalo vaccinating	200	Head	624	Partnership for Development in Kampuchea		<input type="checkbox"/>
170107	Ta Saom	Earth road repair	2700	m	106852	World Food Programme		✓
170107	Ta Saom	Perfume rice crop demonstration	25	person	1068	Department of Agriculture Forestry and Fisheries		<input type="checkbox"/>
170107	Ta Saom	Livestock raising technique training	4	training	1600	Partnership for Development in Kampuchea		<input type="checkbox"/>
170107	Ta Saom	Fish raising training	14	training	5600	Partnership for Development in Kampuchea		<input type="checkbox"/>
170107	Ta Saom	Vegetable seed provision and training	13	training	5200	Partnership for Development in Kampuchea		<input type="checkbox"/>
170107	Ta Saom	Culvert construct	10	place	2000	Partnership for Development in Kampuchea		✓
Social								
170107	Ta Saom	Latrine construction	5	toilet	2700	Department of Rural Development		✓
170107	Ta Saom	Latrine construction	13	village	1500000	Asian Development Bank		✓

District Data Book 2009: Development Plans and Projects

Commune GIS	Commune	Temporary Agreements				Supporter	Funding Source	Listed in CIP before DIW
		Project Name	Quantity	Unit	Est.Cost (K.Riels)			
170107	Ta Saom	Pump wells construction	2	place	9600	Partnership for Development in Kampuchea		✓
170107	Ta Saom	Pump wells construction	12	place	67200	Plan International		✓
170107	Ta Saom	Ring wells construction	6	place	7680	Partnership for Development in Kampuchea		✓
170107	Ta Saom	Literacy class operation	8	class	4800	Partnership for Development in Kampuchea		□
170107	Ta Saom	HIV/AIDS awareness education training	4	training	8000			□
170107	Ta Saom	Wells construction for primary and kindergarten school	3	place	16000	Partnership for Development in Kampuchea		□
170107	Ta Saom	Kindergarten latrine building	1	place	2000	Partnership for Development in Kampuchea		□
NREM								
170107	Ta Saom	Tree plantation project	1500	Tree	32000	Forest administration		✓
170107	Ta Saom	NREM strengthening	2	time	8000	Forest administration		✓
Gender								
170107	Ta Saom	Gender committee and farmer training	14	training	5600	Partnership for Development in Kampuchea		□
170107	Ta Saom	Female councilors capacity strengthening forum	2	training	200	Department of Women		□

Source: CDPD, District Level Detail TA resulting from DIW

8.3 Outputs, estimated and actual costs of C/S Fund Projects between 2005 and 2008, by Commune

Commune	Project Type	Budget Year	Output		Quantity	Unit	Unit Cost MR	
			Description	Type			Estimate	Actual
Char Chhuk	Irrigation	2005	Small water gate	New	3	Place	17.12	15.10
Char Chhuk	Rural Transport	2005	Single pipe culvert	New	2	Place	3.27	12.80
Char Chhuk	Rural Transport	2005	Double cell box culvert	New	1	Place	10.67	12.80
Char Chhuk	Rural Transport	2006	Laterite road	New	1.68	Km	37.77	37.75
Char Chhuk	Rural Transport	2007	Laterite road	New	0.862	Km	30.09	27.08
Doun Peng	Rural Transport	2005	Laterite road	Repair	1500	Km	26.89	24.49
Doun Peng	Rural Transport	2006	Laterite road	New	1.26	Km	28.60	28.60
Doun Peng	Rural Transport	2007	Laterite road	New	1.02	Km	24.95	22.46
Kouk Doung	Rural Transport	2005	Laterite road	Repair	2700	Km	43.78	41.37
Kouk Doung	Rural Transport	2006	Laterite road	New	2.1	Km	37.74	37.74
Kouk Doung	Rural Transport	2007	Laterite road	Repair	1.5	Km	43.45	43.35
Kouk Doung	Rural Transport	2008	Laterite road	Repair	1.5	Km	39.72	39.72
Koul	Rural Transport	2005	Laterite road	New	1500	Km	29.61	28.11
Koul	Rural Transport	2006	Laterite road	New	0.882	Km	25.63	25.65
Koul	Rural Transport	2007	Laterite road	New	0.75	Km	23.46	23.20
Nokor Pheas	Rural Transport	2005	Laterite road	Repair	2600	Km	36.52	34.69
Nokor Pheas	Rural Transport	2006	Laterite road	New	1.428	Km	32.36	32.90
Nokor Pheas	Rural Transport	2007	Single pipe culvert	New	1	Place	3.02	9.00
Nokor Pheas	Rural Transport	2007	Double pipe culvert	New	1	Place	7.09	9.00
Nokor Pheas	Rural Transport	2007	Laterite road	Repair	0.8	Km	24.44	24.40
Srae Khvav	Rural Transport	2005	Laterite road	Repair	2	Km	31.87	27.87
Srae Khvav	Rural Transport	2006	Laterite road	New	2.5	Km	37.20	37.00
Srae Khvav	Rural Transport	2007	Laterite road	New	1.1	Km	30.01	30.00
Ta Saom	Rural Transport	2005	Laterite road	Repair	2	Km	30.25	28.75
Ta Saom	Rural Transport	2006	Laterite road	New	1.68	Km	35.61	35.61
Ta Saom	Rural Transport	2007	Laterite road	New	1.1	Km	28.79	26.00
Ta Saom	Rural Transport	2008	Double cell box culvert	New	1	Place	18.83	31.20
Ta Saom	Rural Transport	2008	Single cell box culvert	New	1	Place	12.85	31.20

Source: PID

8.4 Total Expenditure on C/S Fund Projects by sector and commune between 2005 and 2008

Sector	Total Cost in Million Riels						
	Char Chhuk	Doun Peng	Kouk Doung	Koul	Nokor Pheas	Srae Khvav	Ta Saom
Irrigation	15.10						
Rural Transport	77.64	75.55	162.18	76.96	100.99	94.87	121.56

*Source: PID***8.5 Actual 2009 C/S Fund projects by Commune**

Commune	Project Type	Project Output		Quantity	Unit	Fund Source (Riels)		
		Description	Type			Total	C/S	Local Contribution
Char Chhuk	Rural Transport	Laterite road	Repair	1	km	30,668,000	30,268,000	400,000
Char Chhuk	Rural Transport	Laterite road	Repair	1.4	km	39,696,000	39,096,000	600,000
Doun Peng	Rural Transport	Laterite road	Repair	2	km	55,476,000	53,859,000	1,617,000
Kouk Doung	Rural Transport	Laterite road	Repair	1.5	km	39,448,000	38,948,000	500,000
Koul	Rural Transport	Laterite road	Repair	1.87	km	53,420,000	52,950,100	469,900
Nokor Pheas	Rural Transport	Laterite road	Repair	2.5	km	68,212,000	66,812,000	1,400,000
Srae Khvav	Rural Transport	Laterite road	Repair	2.2	km	66,116,000	65,116,000	1,000,000
Ta Saom	Rural Transport	Earth road	Repair	2	km	42,040,000	40,804,000	1,236,000

Source: PID

9 District level Projects from 2006 to 2009

District Initiative Projects (DIPs) are funded by Danida, DFID and PSDD (UNDP, DFID and SIDA).

Funding for 2006-2008

Between 2006 and 2008 there were 14 provinces funded by PSDD and 10 by Danida and DFID. The list of provinces and who funded these is below

Danida and DFID funded DIPs:

Kampong Cham	Kampong Speu	Koh Kong	Kratie	Monduliri
Pursat	Ratanakiri	Siem Reap	Sihanoukville	Kep

PSDD funded DIPs:

Banteay Meanchey	Battambang	Kampong Chhnang	Kandal	Phnom Penh
Prey Veng	Svay Rieng	Takeo	Kampong Thom	Preah Vihear
Stung Treng	Kampot	Oddar Meanchey	Pailin	

Funding for 2009

In 2009 there was a change to the number of provinces funded by the two streams. Danida and DFID were still funding the same 10 provinces they had been funding the previous three years, but two more provinces were added *Kampong Thom and Kampot*. Now PSDD funds 12 provinces and Danida and DFID fund 12.

9.1 District Initiative Infrastructure Projects from 2006 to 2009

9.1.1 District Initiative Infrastructure Projects for 2006 to 2008

Date	Project Name	Implementing Agencies	Budget (US\$)	Project Output & Capacity	Number of Beneficiaries
2007	Rehabilitate dam of Tram Chhneang	Inter-commune	8,240.00		
2007	Construct water gate	Inter-commune	11,690.00		
2008	Dam rehabilitation of Tramchhneang	Inter-commune	10,170.00		
2008	Water gate construction	Inter-commune	9,800.00		

9.1.2 District Initiative Infrastructure Projects in 2009

No District Initiative Infrastructure Projects have been implemented in this district for 2009

9.2 District Initiative Service Projects from 2006 to 2009

9.2.1 District Initiative Service Projects for 2006 to 2008

Date	Project Names	Implementing agencies	Budget (US\$)	Project Output & Capacity	Number of Beneficiaries
2007	Dissemination on land law and construction law	District Land	2,160.00		
2007	Selection and training on agri diversification system	District Agri	1,001.00		
2007	Demonstration on agri diversification system	District Agri	1,367.00		
2007	Organize farmer school Day and M&E	District Agri	1,682.00		
2007	Training water user communities	District WRM	540.00		
2008	Rice production	District AGRI	1,641.00	5 communes	60 families
2008	Integrated framing system	District AGRI	1,565.00	2 communes	10 families
2008	Village VET training	District AGRI	2,344.00	3 commues	12 person
2008	Establish community water user groups	District WRM	834.00	1 commune	1 community
2008	Strengthen community water user groups	District WRM	366.00	1 commune	1 community

9.2.2 District Initiative Service Projects in 2009

Project Name	Sector	Implementing Agency	Budget	Project outputs/ capacities	No. of Beneficiaries		Progress	Remarks on Issues of Progress
					Total	Female		
Rice production training	AGR	Agriculture Office	\$2,000.00	70 families	352	140	60%	On going
Strengthen the community forestry of Bos Penh	AGR	Forestry Admin	\$3,900.00	1 community	7,517	4,135	15%	On going
Strengthen the farmer water users community	WRM	WRM Office	\$850.00	1 community	2,350	1,620	0%	Not yet on time to process

9.3 Inter Commune Council Projects in 2008 and 2009

9.3.1 ICC Projects in 2008

No ICC projects in this district at this time

9.3.2 ICC Projects in 2009

No ICC projects in this district at this time

Source: ICC project, Ministry of Interior (DoLA), -UNDP project for Local Governance – DDLG

9.4 Other Projects in 2008 and 2009

9.4.1 RPRP

There are no RPRP projects being implemented in this district or province at this time. The RPRP is only being implemented in Svay Rieng and Prey Veng

9.4.1.1 RPRP Projects from 2006 to 2008

No RPRP projects in this district at this time

9.4.1.2 RPRP Projects in 2009

No RPRP projects in this district at this time

9.4.2 Seth Korma

9.4.2.1 Seth Koma 2007

There are no Seth Korma projects being implemented in this district or province at this time.

Source: UNICEF

9.4.2.2 Seth Koma 2008

There are no Seth Korma projects being implemented in this district or province at this time.

Source: UNICEF

9.4.2.3 Seth Koma 2009

There are no Seth Korma projects being implemented in this district or province at this time.

Source: UNICEF

SECTION D: SERVICES AND ORGANIZATIONS

10 Infrastructure

10.1 Length of and Expenditure on Roads in 2008, by District

Roads	SRP	Angkor Chum	Angkor Thum	Banteay Srei	Chi Kraeng	Kralanh	Puok
Length of paved road in the district in Km	106	14	0	4	50	4	0
Length of unpaved roads in the district in Km	2,006	124	59	87	298	198	200
Amount spent on construction of roads in 2008 (\$)	n/a	n/a	n/a	n/a	n/a	n/a	n/a
Amount spent on repair and rehabilitation of roads in 2008 (\$)	n/a	n/a	n/a	n/a	n/a	n/a	n/a

Continue...

Roads	SRP	Prasat Bakong	Siem Reap	Soutr Nikom	Srei Snam	Svay Leu	Varin
Length of paved road in the district in Km	106	14	9	12	0	0	0
Length of unpaved roads in the district in Km	2,006	318	178	161	108	36	239
Amount spent on construction of roads in 2008 (\$)	n/a	n/a	n/a	n/a	n/a	n/a	n/a
Amount spent on repair and rehabilitation of roads in 2008 (\$)	n/a	n/a	n/a	n/a	n/a	n/a	n/a

Note 1: Please note that these data are not necessarily complete or correct. The data are derived from government agencies at provincial and district level which used different recording systems, did not always have complete data or were, sometimes, less than willing to share their data.

Note 2: Please be aware that these data are incomplete due to the fact that the amounts for the construction, repair and rehabilitation recorded reflect only funds provided by the government, not the contributions by any other parties.

10.2 Scale of and Expenditure on Irrigation in 2008, by District

Irrigation	SRP	Angkor Chum	Angkor Thum	Banteay Srei	Chi Kraeng	Kralanh	Puok
Number of irrigation schemes operating in 2008	55	3	3	4	5	4	na
Total nr of hectares under irrigation in dry season 2008	14,624	0	0	70	3,673	550	3,965
Total funds spent in 2008 on construction of irrigation systems (\$)	244,573	26,130	18,620	26,784	24,923	43,300	n/a
Total funds spent in 2008 on rehabilitation/repair of irrigation systems (\$)	73,542	6,102	4,500	5,379	7,207	0	n/a
Total funds spent in 2008 on operation and maintenance (\$)	-	0	0	0	0	0	0

Continue...

Irrigation	SRP	Prasat Bakong	Siem Reab	Soutr Nikom	Srei Snam	Svay Leu	Varin
Number of irrigation schemes operating in 2008	55	8	0	4	7	6	11
Total nr of hectares under irrigation in dry season 2008	14,624	2,150	2,544	1,672	0	0	0
Total funds spent in 2008 on construction of irrigation systems (\$)	244,573	16,810	0	1,908	31,468	23,590	31,040
Total funds spent in 2008 on rehabilitation/repair of irrigation systems (\$)	73,542	3,294	0	22,321	16,753	6,700	1,286
Total funds spent in 2008 on operation and maintenance (\$)	-	0	0	0	0	0	0

Note 1: Please note that these data are not necessarily complete or correct. The data are derived from government agencies at provincial and district level which used different recording systems, did not always have complete data or were, sometimes, less than willing to share their data.

Note 2: Please be aware that the data above are incomplete as these only reflect funds provided by the government, not the contributions by farmers or other parties.

10.3 Power Supply in 2008, by District

Electricity	SRP	Angkor Chum	Angkor Thum	Banteay Srei	Chi Kraeng	Kralanh	Puok
Total number of electricity connections to households	39,286	172	0	308	1,376	814	2,001
Total number of electricity connections to agencies, companies, organizations	388	0	0	0	0	0	0
Total volume in KWh of electricity consumed last in 2008	268,894,510	n/a	0	n/a	n/a	n/a	n/a
Total amount collected from users for consumed electricity (\$)	9,966,449	n/a	0	n/a	n/a	n/a	n/a
Per capita electricity consumption in 2008 in Kwh	747	n/a	0	n/a	n/a	n/a	n/a

Continue...

Electricity	SRP	Prasat Bakong	Siem Reab	Soutr Nikom	Srei Snam	Svay Leu	Varin
Total number of electricity connections to households	39,286	578	17,467	1,441	61	17	79
Total number of electricity connections to agencies, companies, organizations	388	0	194	0	0	0	0
Total volume in KWh of electricity consumed last in 2008	268,894,510	n/a	134,447,255	n/a	n/a	n/a	n/a
Total amount collected from users for consumed electricity (\$)	9,966,449	n/a	4,983,224	n/a	n/a	n/a	n/a
Per capita electricity consumption in 2008 in Kwh	747	n/a	n/a	n/a	n/a	n/a	n/a

Note 1: Please note that these data are not necessarily complete or correct. The data are derived from government agencies at provincial and district level which used different recording systems, did not always have complete data or were, sometimes, less than willing to share their data.

Note 2: These data only record electricity provided by electricity companies and does not include homes powered by generators or batteries (for this information see Section B: General Profile, Part 1: General Information; table 1.3.1 and chart 1.3.4).

Note 3: In most provinces electricity is only provided through town-based networks

Note 4: Per capita consumption is calculated by dividing the total volume of electricity produced in 2008 by the number of people living in each district as per the 2008 census (for the provincial data it is calculated against the number of people living in the province)

11 Health Facilities

Please note that the Operational District (health) boundaries are different to the administrative district boundaries. Therefore the data provided here shows the facilities, staff, NGOs etc in each Operational District within the province NOT the administrative district.

Acronyms

Com Cov	Commune Covered	MW2	Secondary Midwives
CPA	Complementary Package of Activities	NU1	Primary Nurse
Dr	Doctor	NU2	Secondary Nurse
FDH	Former District Hospital	OD	Operational District
HC	Health Center	Others	Other Staff
HC (NB)	Health Center no building	PHD	Provincial Health Department
HP	Health Post	Pop 04-05	Population Covered 2004 or 2005
MA	Medical Assistant	RH	Referral Hospital
MPA	Minimum Package of Activities	Vil Cov	Village Covered
MW1	Primary Midwives	VIL-HC	Distance from Village to Health Center

11.1 Health Facilities in the Province, by Operational District

Siem Reap	OD	RH	HC	HP
Angkor Chum	1		15	
Kralanh	1	1	10	
Siem Reap	1	1	16	
Sotr Nikum	1	1	19	
Total	4	3	60	0

11.2 Health Facilities and Staff in the province, by Operational District

This table shows health facilities, staff and coverage of health facilities in each operational district.

No	Facility Name	Type	Class	Dr	Ma	Nu2	Nu1	Mw2	Mw1	Others	Com Cov	Vil Cov	Pop. 04-05
Kralanh													
1	Chonleas Dai	HC(NB)	None	0	0	0	0	0	0	0	3	13	10,274
2	Kampong Thkov	HC	MPA	0	0	0	2	0	2	2	3	21	14,721
3	Prei	HC(NB)	None	0	0	0	0	0	0	0	2	12	11,627
4	Prey Chrouk	HC	MPA	0	0	3	1	1	1	0	1	12	10,453
5	Rong Ko	HC	MPA	0	0	1	3	1	0	0	2	17	12,016
6	Sambour	HC	MPA	0	0	0	2	0	1	1	2	11	9,053
7	Sen Sokh	HC	MPA	0	0	1	1	1	0	0	3	25	17,472
8	Slaeng Spean	HC	MPA	0	0	2	2	0	0	0	2	21	13,215

District Data Book 2009: Services and Organizations

No	Facility Name	Type	Class	Dr	Ma	Nu2	Nu1	Mw2	Mw1	Others	Com Cov	Vil Cov	Pop. 04-05
9	Sraey Snam	FDH	MPA	0	0	5	1	0	0	1	2	9	9,004
Total:				0	0	12	12	3	4	4	20	141	107,835
Siem Reap													
1	Sranal	HC(NB)	None	0	0	0	0	0	0	0	1	13	9,420
2	AngKor Thum	FDH	MPA	0	1	3	2	1	0	0	1	8	7,807
3	Banteay Sraey	FDH	MPA	0	0	2	3	2	0	1	4	12	10,007
4	Chong Khnies	HC	MPA	0	0	3	2	2	0	0	1	7	5,858
5	Chreav	HC	MPA	0	0	2	2	2	1	0	3	14	13,193
6	Kandek	HC	MPA	0	0	2	1	2	1	1	2	16	14,083
7	Kantreang	HC	MPA	0	0	2	2	2	1	1	4	19	16,140
8	Kouk Chak	HC	MPA	0	0	1	4	1	0	0	2	12	20,217
9	Mean Chey	HC	MPA	0	0	3	2	0	1	1	3	12	11,501
10	Mondul I	HC	MPA	3	2	1	2	6	1	1	2	10	37,707
11	Peak Sneng	HC	MPA	0	0	3	0	1	0	1	2	10	7,089
12	Po Mean Chey	HC	MPA	0	0	2	1	4	0	0	1	8	12,402
13	Prasat Bakorng	FDH	MPA	0	0	5	1	2	0	0	5	17	19,909
14	Preak Dak	HC	MPA	0	0	3	1	1	0	1	2	9	10,344
15	Rumchek	HC	MPA	0	0	1	2	0	0	1	3	11	12,849
16	Sambour	HC	MPA	0	0	1	2	2	1	0	3	17	11,791
Total:				3	3	34	27	28	6	8	39	195	220,317
Sotr Nikum													
1	Siem Reap	FDH	MPA	0	0	3	4	3	0	1	2	10	31,911
2	Anlong Samnar	HC	MPA	0	0	3	2	1	0	0	2	28	18,420
3	Chan Sar	HC	MPA	0	0	2	2	1	0	0	2	23	10,949
4	Dam Daek	HC	MPA	0	0	1	1	1	1	0	2	12	12,379
5	Dan Run	HC	MPA	0	0	2	1	2	0	0	2	14	12,911
6	Kampong Kdei	FDH	MPA	1	1	3	3	3	0	1	2	21	14,650
7	Kampong Khlaing	HC	MPA	0	0	3	0	1	1	0	1	10	10,900
8	Khchas	HC	MPA	0	0	1	1	1	0	0	2	11	19,228
9	Khvav	HC	MPA	0	0	1	0	1	0	0	1	9	9,775
10	Kien Sangkae	HC	MPA	0	0	0	1	2	1	0	4	16	15,804
11	Kok Thlok Kraum	HC	MPA	0	0	2	0	0	1	0	3	13	10,129
12	Kouk Thlork Leu	HC(NB)	None	0	0	0	0	0	0	0	3	18	11,693
13	Lveng Russei	HC	MPA	0	0	2	1	0	0	0	1	13	10,637
14	Pongro Kraum	HC	MPA	0	0	3	1	1	0	0	3	17	10,412

District Data Book 2009: Services and Organizations

No	Facility Name	Type	Class	Dr	Ma	Nu2	Nu1	Mw2	Mw1	Others	Com Cov	Vil Cov	Pop. 04-05
15	Popel	HC	MPA	0	0	1	2	1	0	0	4	17	13,049
16	Ruessei Lok	HC(NB)	None	0	0	0	0	0	0	0	1	6	12,906
17	Samraong	HC	MPA	0	0	2	1	2	1	0	2	13	11,336
18	Sangveuy	HC	MPA	0	0	2	1	2	0	0	2	7	8,697
19	Spean Tnaot	HC	MPA	0	0	2	2	1	0	0	2	18	10,857
Total:				1	1	33	23	23	5	2	41	276	256,643
Angkor Chum													
1	Svay Leu	FDH	MPA	0	0	1	2	0	0	2	5	30	18,678
2	Angkor Chum	FDH	MPA	0	0	4	1	1	0	1	3	20	10,348
3	Bott	HC	MPA	0	0	1	1	0	0	0	3	19	11,925
4	Char Chhouk	HC	MPA	0	0	2	1	1	0	0	2	20	10,100
5	Damnak Slanh	HC(NB)	None	0	0	0	0	0	0	0	3	11	7,902
6	Daunkeo	HC	MPA	0	0	2	3	1	1	0	1	14	13,013
7	Kouk Daung	HC	MPA	0	0	1	2	0	1	1	1	15	13,743
8	Krabei Riel	HC(NB)	None	0	0	0	0	0	0	0	2	16	9,915
9	Nokor Pheas	HC	MPA	0	0	2	1	0	1	0	2	13	10,367
10	Pouk	FDH	MPA	3	2	14	8	3	2	3	2	18	18,188
11	Reul	HC	MPA	0	0	2	1	1	2	0	2	22	18,448
12	Samraong Yea	HC	MPA	0	0	2	1	1	3	0	3	18	13,238
13	Sasar Sdam	HC	MPA	0	0	2	3	2	0	0	4	22	16,163
14	Svay Sa	FDH	MPA	0	0	2	2	0	1	0	3	16	11,142
15	Teuk Vil	HC	MPA	0	0	1	5	1	1	0	3	16	14,214
Total:				3	2	36	31	11	12	7	39	270	197,384
Total All				7	6	115	93	65	27	21	139	882	782,179

Source: MEDiCAM – Infrastructure - (http://www.medicam-cambodia.org/hsi/health_system/srch/index.asp?cboLcn=6&cmdSearch=Search&cboCHName=&cboType=)

11.3 Deliveries in 2007 in the Province, by Operational District

OD	Deliveries	Deliveries at home		Deliveries	Total deliveries	Total deliveries
	at HC	By Health Staff	By TBAs	at RH	by Health Staff	by health staff and TBAs
Kralanh	355	1192	1087	222	1769	2856
Siem Reap	277	6559	1910	129	6965	8875
Sot Nikum	1820	1306	2030	78	3204	5234
Ankor Chhum	1564	1861	2327	0	3425	5752
Sub-total	4016	10918	7354	429	15363	22717

Source: MoH, Annual Statistics 2007

12 Education³

12.1 Schools, Classes, Students, Staff, for for all levels, for 2007/2008 by District

District	Number of Schools	Disadv. Schools	Number of Classes	Classes in Pagoda	Enrollment		Repeaters		Teaching Staff		Non-Teaching Staff		Total Staff	
					Total	Girl	Total	Girl	Total	Female	Total	Female	Total	Female
Angkor Chum	44	0	330	0	14,767	7,099	1,806	902	200	67	33	5	233	72
Angkor Thom	20	0	134	0	6,263	3,135	1,230	618	74	33	14	6	88	39
Banteay Srey	29	0	220	0	10,074	4,848	1,629	746	103	57	35	17	138	74
Chi Krong	83	0	642	0	28,484	13,701	2,709	1,140	365	167	94	25	459	192
Kralanh	47	1	321	0	14,667	6,688	1,684	697	226	73	37	8	263	81
Prasat Bakorng	49	1	377	0	17,116	7,907	1,527	604	282	170	69	24	351	194
Puok	84	2	778	0	34,779	16,551	3,559	1,377	632	326	171	46	803	372
Saut Nikum	71	4	560	1	25,181	12,279	2,512	1,118	352	210	102	25	454	235
Siemreap	68	0	1,060	2	52,899	24,317	4,257	1,636	1,291	760	295	156	1,586	916
Srey Snam	38	0	231	6	8,938	4,281	1,151	492	196	57	31	4	227	61
Svay Leu	31	0	144	6	5,743	2,726	1,205	583	80	38	7	0	87	38
Varin	26	1	179	0	7,872	3,855	1,164	598	92	22	16	1	108	23
Whole Province	590	9	4,976	15	226,783	107,387	24,433	10,511	3,893	1,980	904	317	4,797	2,297
- Urban Area	68	0	1,060	2	52,899	24,317	4,257	1,636	1,291	760	295	156	1,586	916
- Rural Area	465	8	3,593	7	160,269	76,489	17,807	7,694	2,430	1,160	586	160	3,016	1,320
- Remote Area	57	1	323	6	13,615	6,581	2,369	1,181	172	60	23	1	195	61

12.2 Characteristics of Schools and School Principals for 2007/2008 by Commune

Commune	Number of Schools				2 - Shift	Floating	Schools	Attached	Schools Without			Characteristics of School Principals (Incharge)			
	Pre-Sch	Primary	College	Lycee	Schools	Schools	in Pagoda	Pre-Sch	Water Sup.	Latrine		Avg. Age	Avg. Service	U.Sec+ Ed.	Female
Char Chhuk	3	5	0	1	6	0	0	3	4	3		45.9	21.3	0	0
Doun Peng	0	5	0	0	5	0	0	0	2	3		41.4	18.2	0	1
Kouk Doung	0	9	1	0	10	0	0	0	2	2		46.3	21.8	1	0
Koul	0	2	0	0	2	0	0	0	1	1		54.5	28.0	0	0
Nokor Pheas	1	4	1	0	4	0	0	1	4	2		49.5	18.8	1	0
Srae Khvav	0	5	1	0	6	0	0	0	0	1		26.2	5.3	1	0
Ta Saom	1	5	0	0	5	0	0	1	1	2		33.5	18.8	0	2

³ All the data for section 12 comes from the Ministry of Education, Youth and Sport (MoEYS)

12.3 Enrolment by Level of Education, 2006/2007 by Commune

Commune	School	Pre school		Primary School		Lower Secondary School		Upper Secondary School		Enrolment	
		Total	Female	Total	Female	Total	Female	Total	Female	Total	Female
Char Chhuk	9	57	27	2250	929	1011	506	0	0	3318	1462
Doun Peng	5	0	0	1378	645	0	0	0	0	1378	645
Kouk Doung	10	0	0	3095	1445	99	50	0	0	3194	1495
Koul	2	0	0	879	419	0	0	0	0	879	419
Nokor Pheas	5	25	17	1628	751	0	0	0	0	1653	768
Srae Khvav	6	0	0	1944	953	78	34	0	0	2022	987
Ta Saom	5	0	0	1960	916	0	0	0	0	1960	916

12.4 Enrolment by Level of Education, 2007/2008 by Commune

Commune	School	Pre school		Primary School		Lower Secondary School		Upper Secondary School		Enrolment	
		Total	Female	Total	Female	Total	Female	Total	Female	Total	Female
Char Chhuk	9	75	43	2217	998	994	532	198	96	3484	1669
Doun Peng	5	0	0	1389	653	0	0	0	0	1389	653
Kouk Doung	10	0	0	3107	1446	272	143	0	0	3379	1589
Koul	2	0	0	859	427	0	0	0	0	859	427
Nokor Pheas	6	25	13	1578	748	67	25	0	0	1670	786
Srae Khvav	6	0	0	1990	1021	117	60	0	0	2107	1081
Ta Saom	6	20	13	1859	881	0	0	0	0	1879	894

12.5 Aspects of Enrolment for 2007/2008 by Commune

Commune	% Repeaters (Total)			% Over-age Enrollment (Total)			% Repeaters (Girl)			% Over-age Enrollment (Girl)		
	Primary	L.Sec.	U.Sec.	Primary	L.Sec.	U.Sec.	Primary	L.Sec.	U.Sec.	Primary	L.Sec.	U.Sec.
Char Chhuk	11.1	0.9	0.0	34.1	63.7	50.0	9.8	0.2	0.0	32.1	62.4	45.8
Doun Peng	14.8	0.0	0.0	32.0	0.0	0.0	17.5	0.0	0.0	31.1	0.0	0.0
Kouk Doung	15.5	0.0	0.0	35.2	74.6	0.0	15.6	0.0	0.0	34.4	74.8	0.0
Koul	14.7	0.0	0.0	28.2	0.0	0.0	14.1	0.0	0.0	25.8	0.0	0.0
Nokor Pheas	9.1	0.0	0.0	36.3	56.7	0.0	10.2	0.0	0.0	35.4	60.0	0.0
Srae Khvav	17.6	0.0	0.0	40.6	76.9	0.0	20.9	0.0	0.0	38.5	78.3	0.0
Ta Saom	13.0	0.0	0.0	32.3	0.0	0.0	12.9	0.0	0.0	33.6	0.0	0.0

12.6 School Buildings for all schools in the District for 2007/2008, by Commune

Commune	Total Number of		Concrete/Brick Structure		Wooden Structure		Bamboo Structure		New Buildings		Buildings Without Good		
	Buildings	Rooms	Buildings	Rooms	Buildings	Rooms	Buildings	Rooms	Repaired	Constructed	Floor	Roof	Wall
Char Chhuk	17	74	14	58	3	16	0	0	0	0	2	0	2
Doun Peng	8	28	7	26	1	2	0	0	0	0	3	0	2
Kouk Doung	13	39	8	28	3	8	2	3	0	0	1	0	0
Koul	4	16	3	13	1	3	0	0	0	0	0	0	0
Nokor Pheas	8	34	6	28	2	6	0	0	0	0	1	1	1
Srae Khvav	9	37	9	37	0	0	0	0	0	1	0	0	0
Ta Saom	12	42	5	26	6	15	1	1	0	1	3	1	2

12.7 Conditions of Classrooms and Existence of Separate School Office and Library, by Commune

Commune	Number of Class rooms	Number of Classrooms			Classrooms Without Good			Number of Furniture needed				Schools with Separate	
		in Pagoda	New Repaired	New Constr.	Floor	Roof	Wall	Desks	Chairs	Black-board	Teacher Table	Office	Library
Char Chhuk	48	0	0	0	10	0	10	0	0	0	0	5	4
Doun Peng	21	0	0	0	7	0	5	0	0	0	0	4	0
Kouk Doung	36	0	0	0	5	0	0	0	0	0	0	4	1
Koul	11	0	0	0	0	0	0	0	0	0	0	1	0
Nokor Pheas	29	0	0	0	6	6	6	1	1	0	1	3	1
Srae Khvav	27	0	0	6	0	0	0	0	0	0	0	3	2
Ta Saom	23	0	0	5	6	6	0	125	25	0	8	3	2

12.8 Community Participation and Financing across all schools in the District for 2007/2008 by Commune

Commune	Parent Association				Comm. Teachers	Teaching Monks	PAP Fund (Riel)		Number of Schools Obtaining Funds from				
	Exists	Held Meet	Total	Female			per Student	per School	Sch. Income	Community	Gvt. For building	Abroad	IOs/NGOs
Char Chhuk	7	7	6	1	0	0	12,010	5,024,383	0	0	0	0	0
Doun Peng	5	5	5	1	0	0	8,776	2,321,375	0	0	0	0	0
Kouk Doung	9	9	7	1	0	0	8,033	2,565,885	0	0	0	0	0
Koul	2	2	4	2	0	0	7,560	3,322,700	0	0	0	0	0
Nokor Pheas	4	4	4	0	0	0	7,947	2,587,690	0	0	0	0	0
Srae Khvav	6	6	8	2	0	0	8,439	3,281,260	0	0	0	0	0
Ta Saom	4	4	7	1	0	0	8,743	2,845,750	0	0	0	0	0

12.9 Percentage Student Flow Rates and Graduation by level 2006/2007, by Commune

Commune	Primary Level (Grades 1-6)			Lower Secondary Level (Grades 7-9)			Upper Secondary Level (Grades 10-12)			Successful Candidates		
	Promotion	Repetition	Dropout	Promotion	Repetition	Dropout	Promotion	Repetition	Dropout	Grade 6	Grade 9	Grade 12
Char Chhuk	79.5	10.9	9.6	65.7	0.9	33.4	0.0	0.0	0.0	192	143	0
Doun Peng	75.9	14.9	9.1	0.0	0.0	0.0	0.0	0.0	0.0	132	0	0
Kouk Doung	67.5	15.6	16.9	82.8	0.0	17.2	0.0	0.0	0.0	192	0	0
Koul	69.6	14.3	16.0	0.0	0.0	0.0	0.0	0.0	0.0	59	0	0
Nokor Pheas	74.3	8.8	16.9	0.0	0.0	0.0	0.0	0.0	0.0	123	0	0
Srae Khvav	73.1	18.1	8.8	66.7	0.0	33.3	0.0	0.0	0.0	96	0	0
Ta Saom	80.0	12.3	7.7	0.0	0.0	0.0	0.0	0.0	0.0	223	0	0

13 Staff and Resources at the District

This chapter presents data from the District Information System, collected around the middle of 2009 unless otherwise specified.

13.1 District Councillors elected in 2009

Name	Sex	Year of Birth	Function	Phone
ឈឹម ទុន	M	19-05-1952	Chairperson of The Council	012-917 495
ភីង ឆេម	M	15-15-1941	Councillor	092-983 257
ខ្យង រ៉ាត់	M	1958	Councillor	012-198 6041
មុយ ឡឿក	M	1941	Councillor	092-207 523
មិន ពិត	F	1948	Councillor	
ដួង កុល	M	1954	Councillor	012-198 3762
ភឿន ឈី	M	1947	Councillor	092-774 594
ក្រូច សិន់	M	1950	Councillor	012-170 9548
ម៉ៅ សំបួរ	M	1953	Councillor	017-696 596
ហ្វាយ សិក	M	1950	Councillor	012-545 579
ដួង លុយ	F	1947	Councillor	
ម៉ក់ អ៊ុន	M	1954	Councillor	012-174 0970
ហ៊ាត់ ផា	M	1980	Councillor	017-549 982
ប៊ី សុខន	M	1952	Councillor	092-255 397
ថុន រឿន	M	1971	Councillor	012-172 2579

13.2 Committees of the Council

Please note at the time of producing the district data books the composition of the committees was not known for all district councils and therefore data were not available for 13.2.1, 13.2.2, 13.2.3.

13.2.1 Technical Facilitation Committee

13.2.2 Women's and Children's Affairs Committee

13.2.3 Procurement Committee

13.3 Board of Governors

Name	Sex	DoB	Function	Salary Level	Body	Phone
រត្ន ជុំ	M	1955	District Governor	ក.ព.៧	High Ranking Civil Servant	012-905 826
លុក ផុស	M	1968	District Deputy Governor	ខ.ព.៧	Medium Civil Servant	012-715 918
ធឿន ថាវ	M	1970	District Deputy Governor	ខ.ព.១០	Medium Civil Servant	012-549 088
អ៊ុំ ផល្លី	F	1969	District Deputy Governor	ឃ.ព.៤	Administrative Agent	092-276 523

13.4 Offices under Sala Krong, Sala Srok and Sala Khan

Office Name	Chief		Deputy Chief		No. of Staff				Office Area (m2)	No of vehicle (public or program)	
					State		Contract			vehicle	moto
	M	F	M	F	M	F	M	F			
District/ Khan Cabinet	1	0	1	0	0	0	0	0	Borrow	0	4
Adminnistration Office	1	0	1	0	2	3	1	1	Borrow	0	1
Economy Office	1	0	0	0	1	0	0	0	Borrow	0	0
Social Affair Office	0	0	1	0	1	0	0	0	Borrow	0	0

13.5 Municipality/District/Khan line offices

Office Name	Chief		Deputy Chief		No. of Staff				Office Area (m2)	No of vehicle (public or program)	
					State		Contract			vehicle	moto
	M	F	M	F	M	F	M	F			
District/ Khan Police Headquarter	1	0	5	0	90	0	0	0	150	0	8
District/ Khan Military Police Headquarter	1	0	3	0	9	0	0	0	296.5	1	0
District/ Khan Military Subregion	1	0	2	0	13	0	0	0	1640	0	0
Planning Office	1	0	1	0	0	0	0	0	Borrow	0	1
Women Affairs Office	0	0	1	1	0	0	0	0	Borrow	0	0
Education Office	1	0	0	0	10	1	0	0	77	0	0
District/ Khan Operational Office	1	0	0	0	13	2	1	0	280	2	8
Agriculture Office	1	0	1	0	3	1	1	0	Borrow	0	6
Social Affairs Office	1	0	0	0	0	0	0	0	Borrow	0	0
Culture Office	0	0	0	0	1	0	0	0	Borrow	0	0
Cult and Religion Office	0	0	0	0	0	0	1	0	Borrow	0	0
Finance Office	1	0	0	0	0	0	1	0	Borrow	0	0
Information Office	0	0	1	0	0	0	0	0	Borrow	0	0
Public Work Office	0	0	0	0	0	0	1	0	Borrow	0	0
Post Office	0	0	0	0	1	0	0	0	Borrow	0	0
Lan Management Office	1	0	0	0	0	0	1	0	42	0	1
Water Resources Office	0	0	0	0	1	0	0	0	Borrow	0	0

13.6 Properties and Equipment of District Administration

13.6.1 Buildings

Description	Unit	Number	Remark
Office building type			
- Concrete	building	1	
- Wood	building	1	
- Mixed	building	0	
Total floor space	m2		
- Concrete	m2	240	
- Wood	m2	128	
- Mixed	m2	0	
Building condition			
- Concrete	%	100	
- Wood	%	40	
- Mixed	%	0	
Office reserved land area	m2	0	
Total office land area	m2	29,773	

13.6.2 Means of Transport available at the District Administration

Description	Unit	Number	Remark
Vehicle (type, size and condition)	Vehicle	3	
Motorcycle (type, size and condition)	Motor	32	

13.6.3 Equipment in District Offices

Description	Unit	Number	Remark
Generator	per set	0	
Photocopy machine at the office	per set	0	
Private photocopy machine at the district town	place	1	
Telephone network (mobile line service)	network	4	011/012/016/097
Telephone network (land line service)	network	0	
Fax (include Fax number)	per set	0	
Computer	per set	3	
Printer	per set	1	
Scanner	Per set	0	
Number of computers those can access Internet and email services in the municipality/ district/khan office (including the technical line offices (please provide the email address)	set	0	
Typewriters (including the technical line offices)	per set	0	
Staff of Municipality/district/khan office can use computer	person	3	

13.6.4 Equipment and facilities at the District Town

Description	Unit	Number	Remark
Availability of electricity at noon	Nr Hours	6	
Private internet and email services in the municipality/ district/khan town.	place	0	

13.7 Registered Revenue of the District Administration in 2008⁴

Sources of Revenue	Revenue Collecting Agency	Estimated annual revenue (In Riels)
Slaughter Hosue	Provincial Taxation Branch	1,000,000
Shopping Store	Salasrok	800,000
House Renting Tax	Provincial Taxation Branch	4,000,000
Construction Service	Land Management Office	500,000

13.8 Services in the District

13.8.1 Public Sector Services

Type of Infrastructure/services	Unit	Number	
		Public	Private
Schools			
Pre-school	room		
Primary School	room	242	0
Secondary school	room	10	0
High School	room	30	0
University	room		
Health			
Health post	place		
Health center	place	6	0
Referral Hospital	bed	60	0

13.9 Civil Society Organizations active in the District

13.9.1 NGOs, Associations, Programs and Projects

Name	Abbr.	Sector Activities	No. of Target Communes	No. of Target Villages	Office in District
NA	PADEK	ផ្លូវ ទឹកស្អាត ធារាសាស្ត្រ បង្គន់	17	31	Yes
NA	NA	បណ្តុះវិជ្ជាជីវៈ បណ្តាក់ទុន	0	15	No
GTZ	GTZ	កម្មវិធីអភិវឌ្ឍន៍សេដ្ឋកិច្ច តំបន់ក្រវ៉ាត់បែតង	7	84	No
NA	PLAN	វិស័យអប់រំ, កម្មវិធីអាណាម័យ, ទឹកស្អាត សន្តិសុខស្បៀង	20	30	No
NA	WFP	អភិវឌ្ឍន៍ផ្លូវលំ អាហារូបត្ថម្ភសិស្ស	11	3	No
NA	ADRA	ឥទ្ធានស្រូវ អគ្គរកម្ម ធារាសាស្ត្រ កែច្នៃ និង ពេទ្យសត្វ	13	20	Yes
NA	CHP	លើកកម្ពស់សុខភាពកុមារ និង មាតា	7	84	Yes
NA	KARITAS	សុខភាព វិស័យអប់រំទឹកស្អាត	0	15	No

⁴ Please note that the data in this table are at best estimates. If the table appears blank it does not mean there is no revenue, just that the data have not been recorded/entered.

Name	Abbr.	Sector Activities	No. of Target Communes	No. of Target Villages	Office in District
NA	RACHA	សុខាភិបាល បណ្តាក់ទុន ឥទ្ធិពលខ្នាតតូច អាហារូបត្ថមកុមារ ជាមួយសហគមន៍	17	84	Yes
NA	RACH	សុខភាពបន្តពូជ	15	25	Yes
NA	ADHOC	ផ្សព្វផ្សាយអំពីសិទ្ធិមនុស្ស	7	84	No

13.9.2 Political Parties active in the Municipality, District and Khan

Name	Abbr.	Office in District
Cambodian People Party	CPP	Yes
FUNCINPEC Party	FUNCINPEC	Yes
Human Rights Party	HRP	Yes
NRP	NRP	Yes
SAM RAINSY Party	Sam Rainsy Party	Yes

13.10 Private Sector Organizations

13.10.1 Registered Companies in 2008, by District

On private sector at commune and/or district level	SRP	Angkor Chum	Angkor Thum	Banteay Srei	Chi Kraeng	Kralanh	Puok
Businesses and Companies							
Number of registered agricultural enterprises (except family farms)	3	0	0	0	0	0	1
Number of registered shops, restaurants, transporters and other services	1,553	n/a	n/a	1	4	6	10
Number of manufacturing companies	-	0	0	0	0	0	0
Number of registered forestry enterprises	-	0	0	0	0	0	0
Number of registered mining companies	n/a	n/a	n/a	n/a	n/a	n/a	n/a
Number of financial institutions	40	2	1	2	4	4	5
Number of other commercial institutions	n/a	n/a	n/a	n/a	n/a	n/a	n/a
Estimated number of informal enterprises (not registered)	n/a	n/a	n/a	n/a	n/a	n/a	n/a
Employment							
Number of people employed in 2008 by companies or any other enterprises	6,431	38	83	411	452	164	140
Investment							
Amount invested in 2008 by private sector (\$)	n/a	n/a	n/a	n/a	n/a	n/a	n/a
Markets							
Number of markets, operating at least weekly	22	1	1	1	1	2	1

Continue...

On private sector at commune and/or district level	SRP	Prasat Bakong	Siem Reab	Soutr Nikom	Srei Snam	Svay Leu	Varin
Businesses and Companies							
Number of registered agricultural enterprises (except family farms)	3	0	2	0	0	0	0
Number of registered shops, restaurants, transporters and other services	1,553	3	1,521	6	n/a	n/a	2
Number of manufacturing companies	-	0	0	0	0	0	0
Number of registered forestry enterprises	-	0	0	0	0	0	0
Number of registered mining companies	n/a	n/a	n/a	n/a	n/a	n/a	n/a
Number of financial institutions	40	5	9	5	1	1	1
Number of other commercial institutions	n/a	n/a	n/a	n/a	n/a	n/a	n/a
Estimated number of informal enterprises (not registered)	n/a	n/a	n/a	n/a	n/a	n/a	n/a
Employment							
Number of people employed in 2008 by companies or any other enterprises	6,431	695	4,076	327	9	4	32
Investment							
Amount invested in 2008 by private sector (\$)	n/a	n/a	n/a	n/a	n/a	n/a	n/a
Markets							
Number of markets, operating at least weekly	22	2	8	4		0	1

Note: These data are not comprehensive as different companies and business are registered with different departments and not all departments were able or willing to provide detailed information. The number of informal enterprises reflects a rough estimate, made at provincial level and could not be verified.

Source: Unofficially collected at Provincial Level

13.10.2 Farmers in 2008, by District

There were no data available for this district at the time data collection

Note: Please note that these data are not necessarily complete or correct. The data are derived from government agencies at provincial and district level which used different recording systems, did not always have complete data or were, sometimes, less than willing to share their data.

Source: Unofficially collected at Provincial Level

SECTION E: POVERTY DATA

14 Data on Poverty

14.1 Predicted Poverty Rates for 2009, by commune

The **Predicted Family Poverty Rate** is based on a statistical model (robust multilevel mixed effect regression) at village level developed by the NCDD M&E Unit and uses CDB data for making an estimate of the predicted poverty rate (this is: the portion of total families in the district or commune who are expected to be poor) for the following year using current year data.

The basis for this predicted poverty rate also uses IDPoor (a project of the Ministry of Planning with technical assistance provided by GTZ) data.

Commune	2004	2009
Char Chhuk	40.90%	30.60%
Doun Peng	46.30%	39%
Kouk Doung	45.60%	37%
Koul	48.10%	38.10%
Nokor Pheas	47.10%	40%
Srae Khvav	49.70%	41.80%
Ta Saom	41.50%	33.30%

14.2 Poverty data from survey

14.2.1 Identification of Poor Households Program (IDPoor)

The Ministry of Planning IDPoor Program has developed standardized Procedures for Identification of Poor Households in rural areas. These Procedures are implemented using a participatory and consultative process by sub-national government structures and community representatives.

The IDPoor Program is managed by the Ministry of Planning (MOP), in cooperation with the Ministry of Interior's Department of Local Administration (DOLA). The program is supported by the Federal Republic of Germany, with technical assistance provided by German Technical Cooperation (GTZ). In 2009, AusAID also provided funding support to the Program.

Objective

The IDPoor Program aims to implement the Procedures for Identification of Poor Households in rural areas as widely as possible, in order to provide data on the level of poverty of areas and households that can be used by a large range of institutions and organizations for targeting services and development assistance to poor areas and poor households.

Coverage: During 2007, 2008 and 2009 the IDPoor Procedures have been implemented in 18 provinces (with partial or complete coverage), covering a total of around 7000 rural villages. The MOP and a number of NGO partners who are Health Equity Fund Operators have collaborated in collecting this data from different areas.

Categorization: Identified poor households are classified under two poverty categories: Poor Level 1 (very poor), and Poor Level 2 (poor). Households are classified based on data

collected using a standard questionnaire, together with consideration by villagers of these households' special circumstances.

Further information: Please go to the IDPoor Program webpage at www.mop.gov.kh/Projects/IDPoor/tabid/154/Default.aspx

Commune	Poor 1 HHs	Poor 2 HHs	Poor 1 HHs	Poor 2 HHs	Total Poor 1&2 HHs	Total HHs in Commune
Char Chhuk	170	230	9.6%	13.0%	22.6%	1770
Doun Peaeng	127	147	10.4%	12.0%	22.4%	1223
Kouk Doung	405	162	15.8%	6.3%	22.1%	2570
Koul	111	154	15.7%	21.8%	37.6%	705
Nokor Pheas	289	190	20.1%	13.2%	33.4%	1436
Srae Khvav	298	223	20.1%	15.1%	35.2%	1479
Ta Saom	126	201	7.6%	12.1%	19.7%	1656